

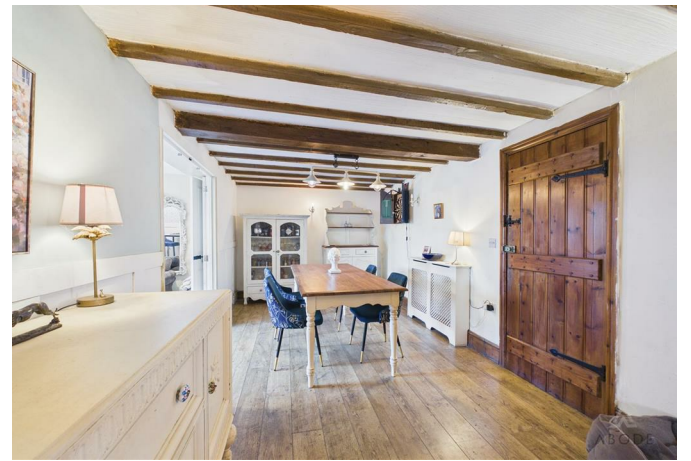




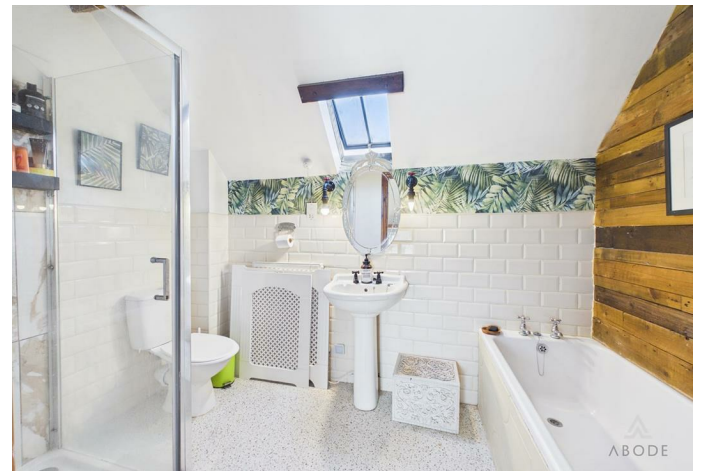
A characterful four-bedroom barn conversion forming part of an exclusive courtyard setting, positioned just off Henhurst Hill and set back along a private driveway. This distinctive home showcases a wealth of original features including exposed beams, timber doors, and vaulted ceilings, combined with generous and versatile living accommodation, a private garden and ample off-street parking, all surrounded by open countryside.





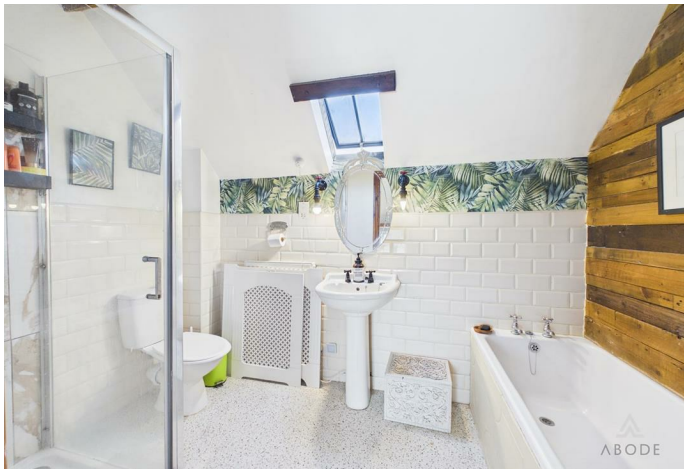


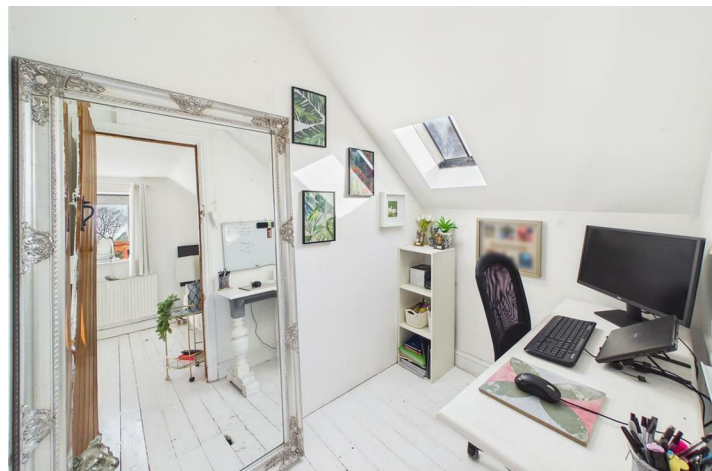














Floor 0



Floor 1



Approximate total area⁽¹⁾

200.9 m²

2163 ft²

Reduced headroom

8.6 m²

93 ft²

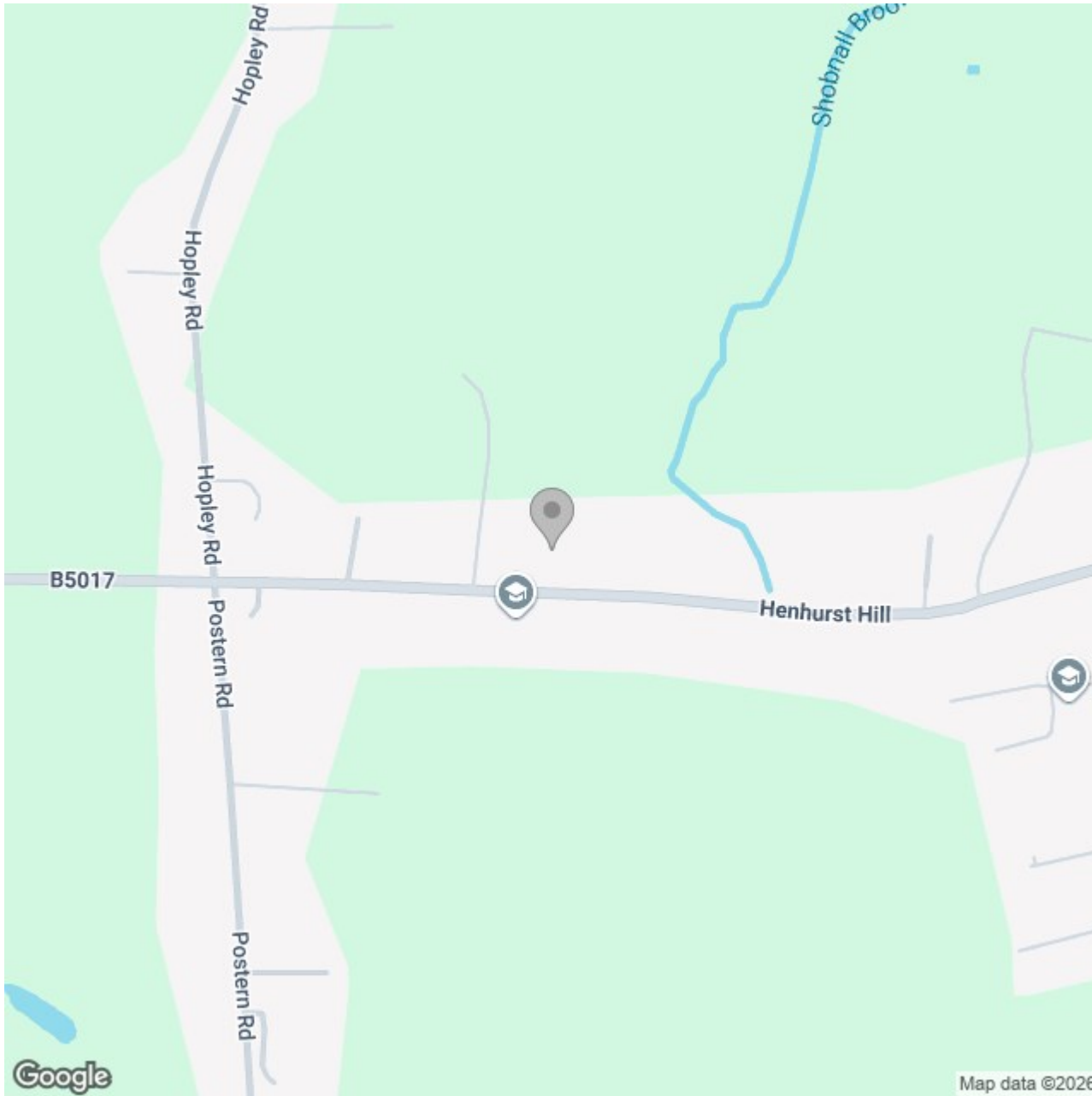
(1) Excluding balconies and terraces

Reduced headroom

----- Below 1.5 m/5 ft

Calculations reference the RICS IPMS 3C standard. Measurements are approximate and not to scale. This floor plan is intended for illustration only.

GIRAFFE360



Energy Efficiency Rating

	Current	Potential
<i>Very energy efficient - lower running costs</i>		
(92 plus) A		
(81-91) B		
(69-80) C		
(55-68) D		
(39-54) E		
(21-38) F		
(1-20) G		
<i>Not energy efficient - higher running costs</i>		
England & Wales	EU Directive 2002/91/EC	