





****GREAT OPPORTUNITY
IN THE HIGHLY REGARDED
VILLAGE OF WILLINGTON

Bay fronted semi detached
property offering a porch
and hallway, lounge diner
with doors into the garden,
fitted kitchen. Three first
floor bedrooms and a
shower room. Front and rear
gardens, block paved drive
with secure gates to further
parking, garage and
enclosed garden. NO CHAIN



ABODE
SALES & LETTINGS

PORCH

Entrance door into the porch with the door into the hallway.

HALL

Stairs to the first floor, door to the kitchen and a door to the lounge diner.

LOUNGE DINER

Feature brick fireplace, upvc glazed bay window to the front elevation, two radiators and double glazed patio doors onto the garden. Door to the kitchen.

KITCHEN

Fitted wall mounted, base and drawer units with work surfaces and a sink and drainer unit. Electric oven and hob, appliance spaces, 2 upvc double glazed windows and a new upvc double glazed door.

FIRST FLOOR LANDING

Upvc double glazed window to the side elevation, airing cupboard, loft access and doors to -

BEDROOM 1

Upvc double glazed window and a radiator.

BEDROOM 2

Upvc double glazed window and a radiator.

BEDROOM 3

Upvc double glazed window and a radiator.



SHOWER ROOM

Walk in shower, wash hand basin, low flush wc and a upvc double glazed window.

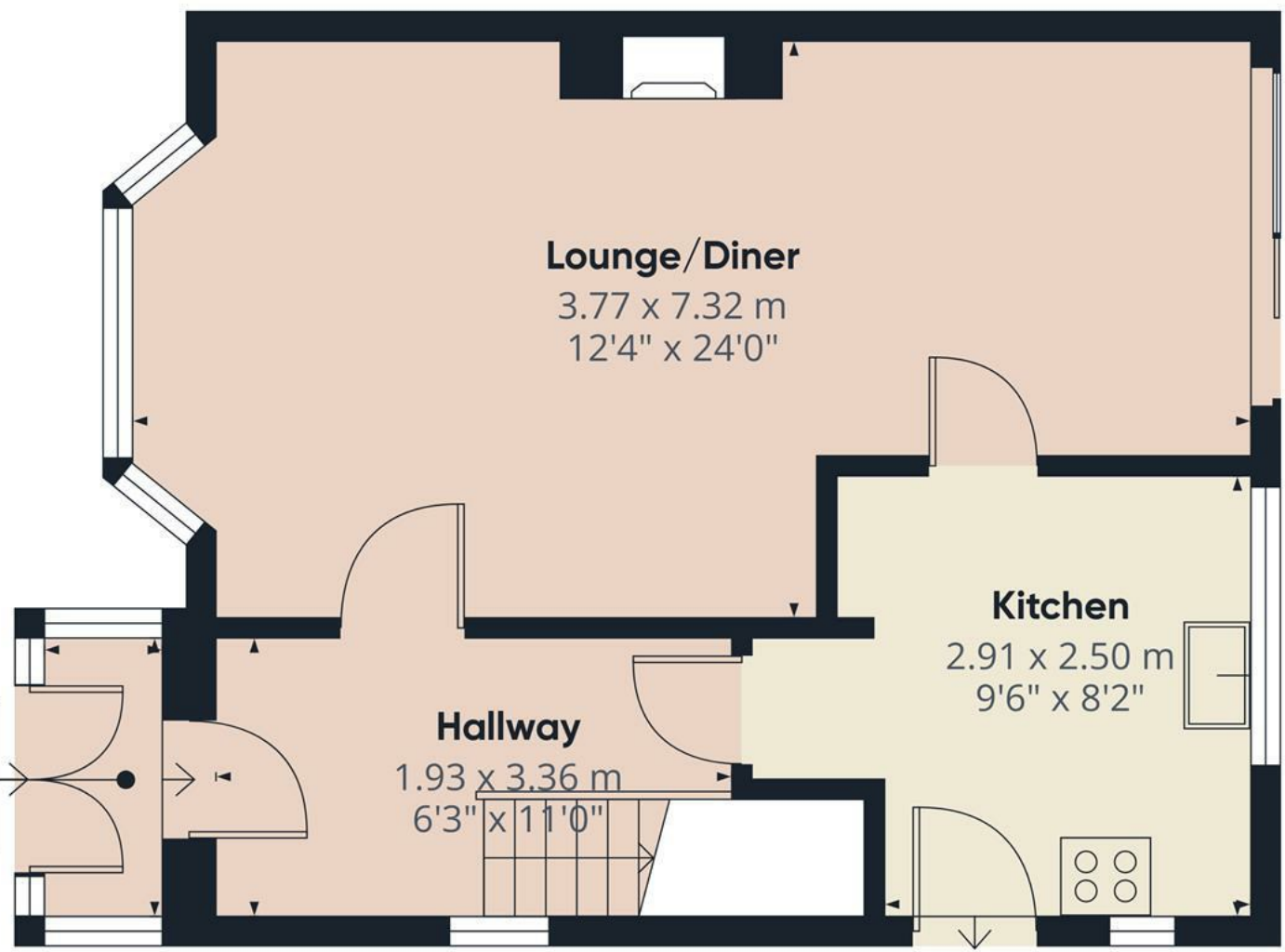
OUTSIDE

The front offers a lawn and a long block paved drive with secure gates to the garage and garden. The rear garden offers a lawn, block paved patio and path and a greenhouse. Outside wc.









Approximate total area⁽¹⁾
41.5 m²
446 ft²

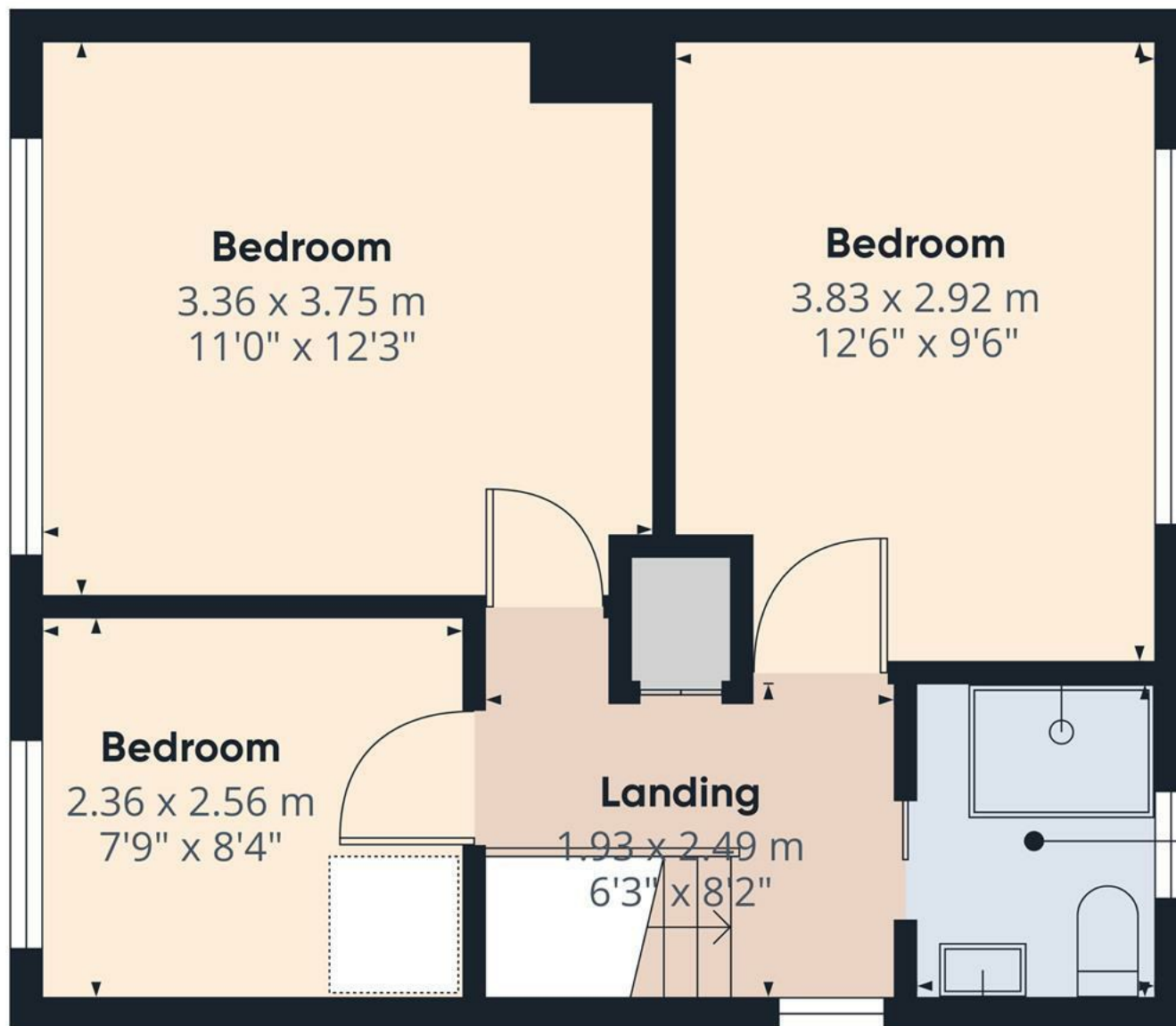
(1) Excluding balconies and terraces

Calculations reference the RICS IPMS 3C standard. Measurements are approximate and not to scale. This floor plan is intended for illustration only.

GIRAFFE360



Floor 0



Approximate total area⁽¹⁾
36.6 m²
393 ft²

(1) Excluding balconies and terraces

Calculations reference the RICS IPMS 3C standard. Measurements are approximate and not to scale. This floor plan is intended for illustration only.

GIRAFFE360



Floor 1

