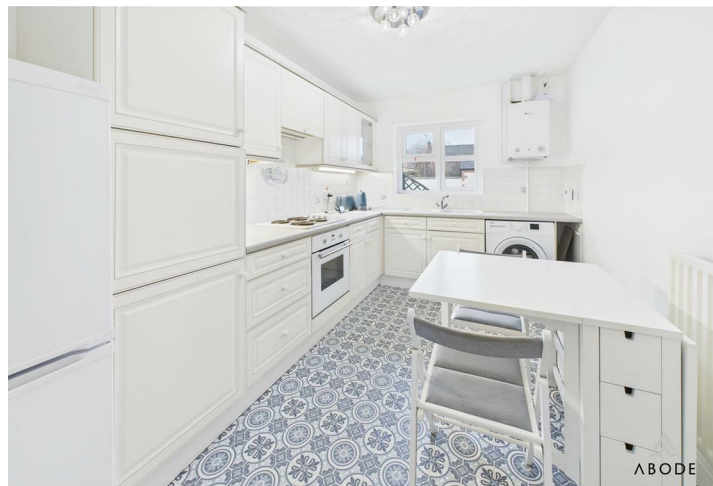






**** QUIET COURTYARD
DEVELOPMENT FOR THE
OVER 55'S **** Perfect
bungalow in the highly
regarded village of
Hemington. This well
presented bungalow offers a
hall, lounge, fitted dining
kitchen, bedroom with
wardrobes and a refitted
bathroom. Parking. Offered
for sale with no upward
chain.



HALL

Entrance door into the hall.

LOUNGE

Feature electric fireplace, upvc double glazed bow window to the front and a radiator.

KITCHEN

Fitted wall mounted, base and a drawer units with work surfaces and a sink and drainer unit. Fitted oven and hob, plumbing and space for a washing machine, space for a tumble dryer, radiator and upvc double glazed window.

INNER HALL

Doors to -

BEDROOM I

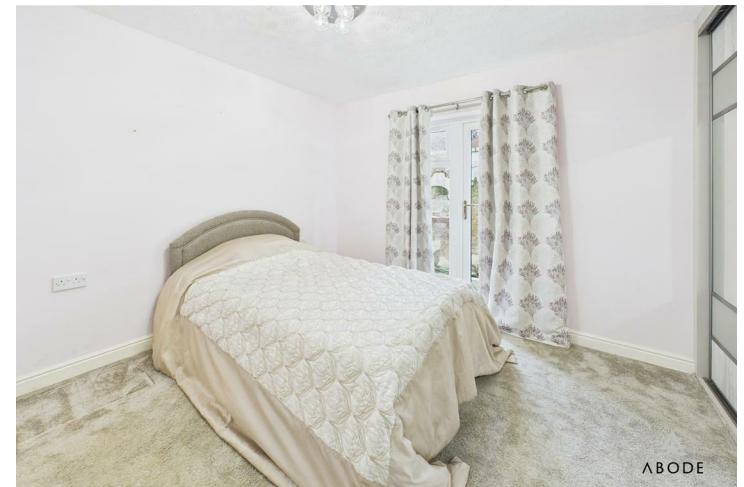
Wardrobes, upvc double glazed double doors and a radiator.

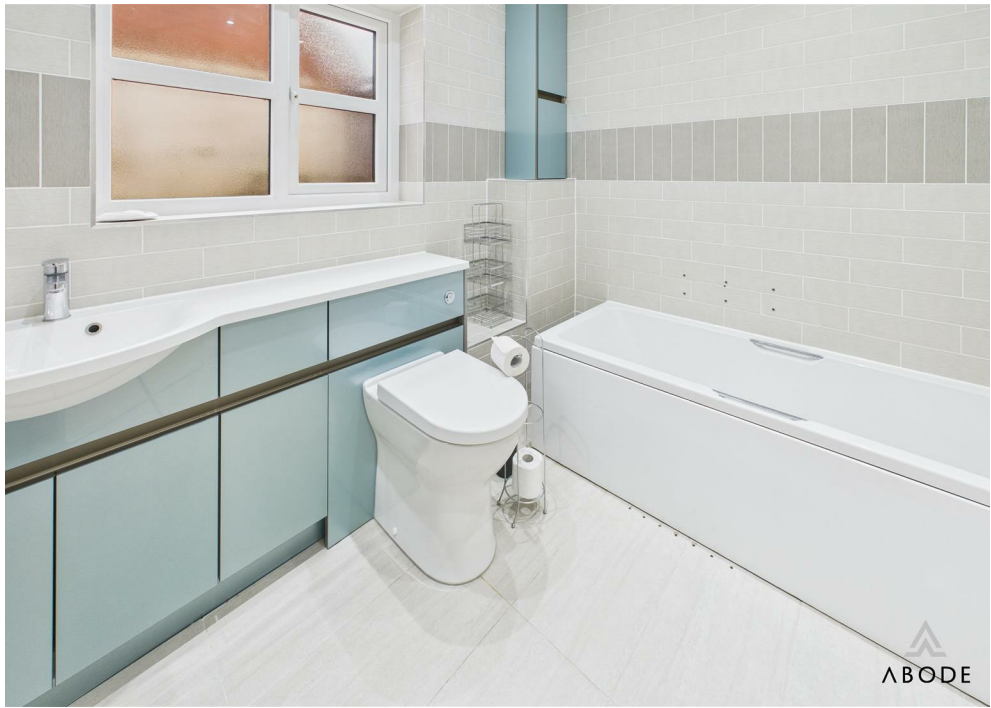
BATHROOM

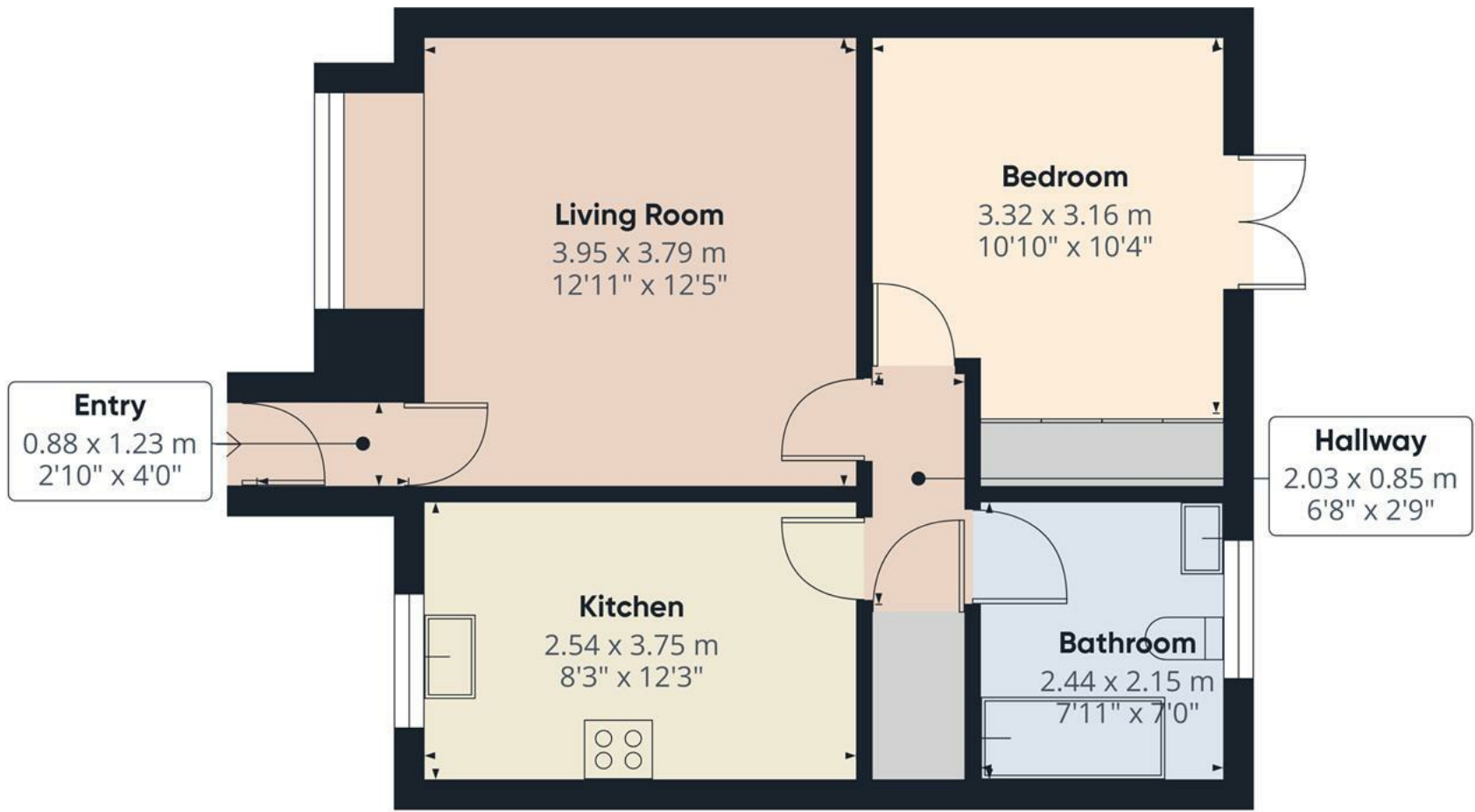
Bath with a shower attachment tap, wash hand basin, low flush wc, fitted cupboards, heated towel radiator and upvc double glazed window.

OUTSIDE

Communal parking.







Approximate total area⁽¹⁾

46.2 m²

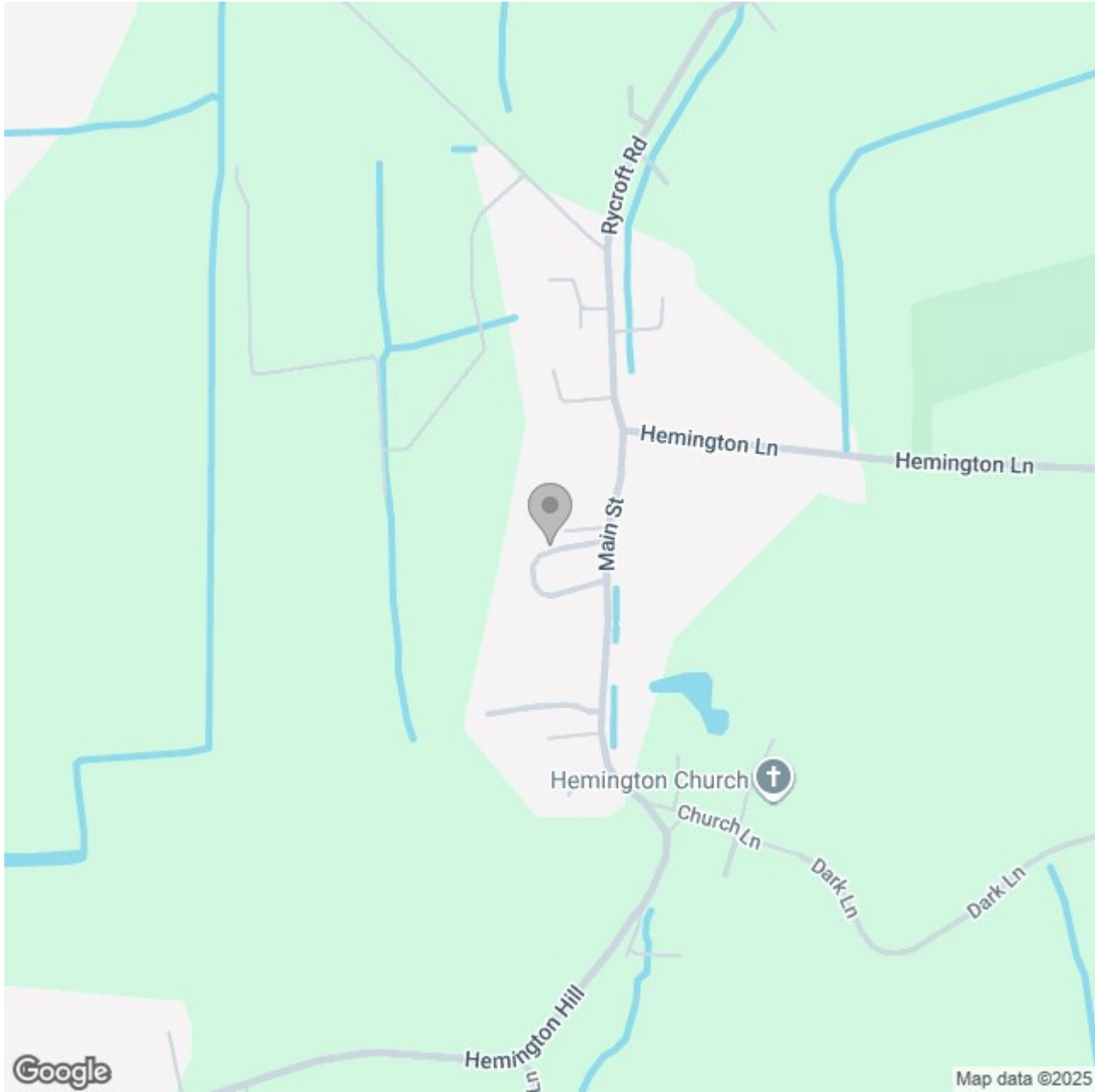
497 ft²

(1) Excluding balconies and terraces

Calculations reference the RICS IPMS 3C standard. Measurements are approximate and not to scale. This floor plan is intended for illustration only.

GIRAFFE360





Energy Efficiency Rating		
	Current	Potential
Very energy efficient - lower running costs		
(92 plus) A		
(81-91) B		86
(69-80) C		
(55-68) D	63	
(39-54) E		
(21-38) F		
(1-20) G		
Not energy efficient - higher running costs		
England & Wales	EU Directive 2002/91/EC 