



## Plot 16 Alverton View Alton, Alton, ST10 4FL

\* VIP LAUNCH WEEKEND - 19TH - 21ST SEPTEMBER \*\* CALL NOW TO BOOK YOUR SLO T\*\*

Reserve this month to benefit from £5,000 worth of incentives and £500 worth of John Lewis vouchers on completion.

With just two homes remaining, this is your last chance to secure a property at Alverton View – and with limited booking slots available, early registration is essential.

Call us on 01889 567777 or email us on [Uttoxeter@abodemidlands.co.uk](mailto:Uttoxeter@abodemidlands.co.uk)

This impressive five-bedroom detached home offers 2,176 sq ft of thoughtfully designed living space and comes with a double garage. The fully fitted showhome features an upgraded kitchen, flooring, carpets,

£730,000

## Plot 16 Alverton View

Alton, Alton, ST10 4FL



Barrington

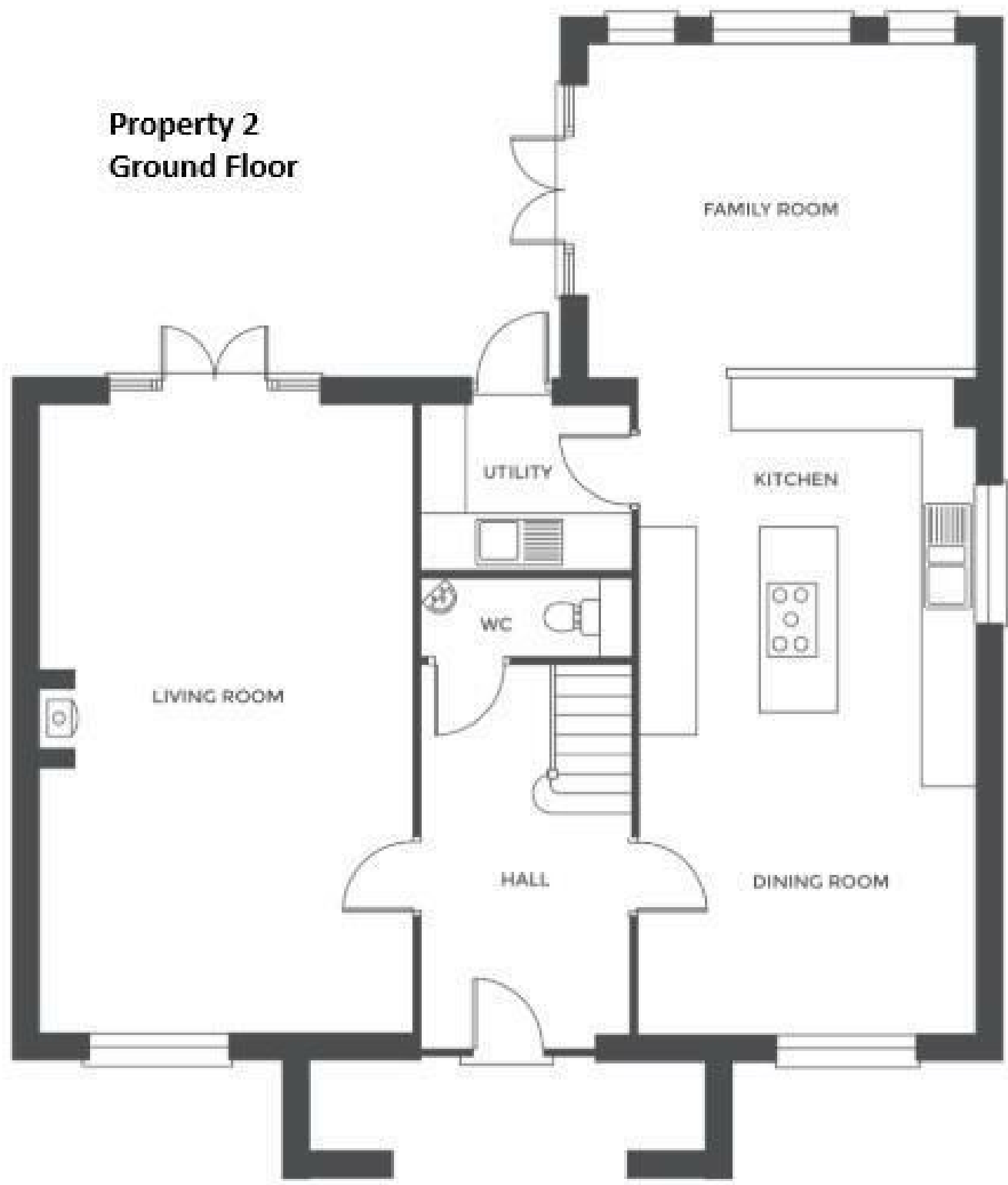


Directions





Floor Plan



These particulars, whilst believed to be accurate are set out as a general outline only for guidance and do not constitute any part of an offer or contract. Intending purchasers should not rely on them as statements of representation of fact, but must satisfy themselves by inspection or otherwise as to their accuracy. No person in this firm's employment has the authority to make or give any representation or warranty in respect of the property.

Energy Efficiency Rating		
	Current	Potential
Very energy efficient - lower running costs		
(92 plus) <b>A</b>		
(81-91) <b>B</b>		
(69-80) <b>C</b>		
(55-68) <b>D</b>		
(39-54) <b>E</b>		
(21-38) <b>F</b>		
(1-20) <b>G</b>		
Not energy efficient - higher running costs		
<b>England &amp; Wales</b>		
EU Directive 2002/91/EC		