

27 Farmlands Lane, Derby, DE23 2UR

£1,565 PCM







ABODE are pleased to offer this most attractive modern four bedroom detached family home being situated in a pleasant cul sac & occupying a generous corner plot. Popular residential suburb & conveniently located for a wide range of local amenities, local road networks & schools of all grades.

Spacious throughout, this is a rare opportunity to secure a lovely family home. In brief, the accommodation provides - Large kitchen/diner with a great selection of wall, base units and a selection of integrated appliances. Good size lounge, additional reception room which would make an ideal study/games room. Guest cloakroom with white suite and Conservatory to rear.

The first floor provides four good size bedrooms. These rooms are serviced by an en-suite shower room to the master in addition to the main family bathroom.

A large plot surrounds the property with lawn and driveway to the frontage. Large patio and lawn complete the rear garden area.

Available from October 2025.



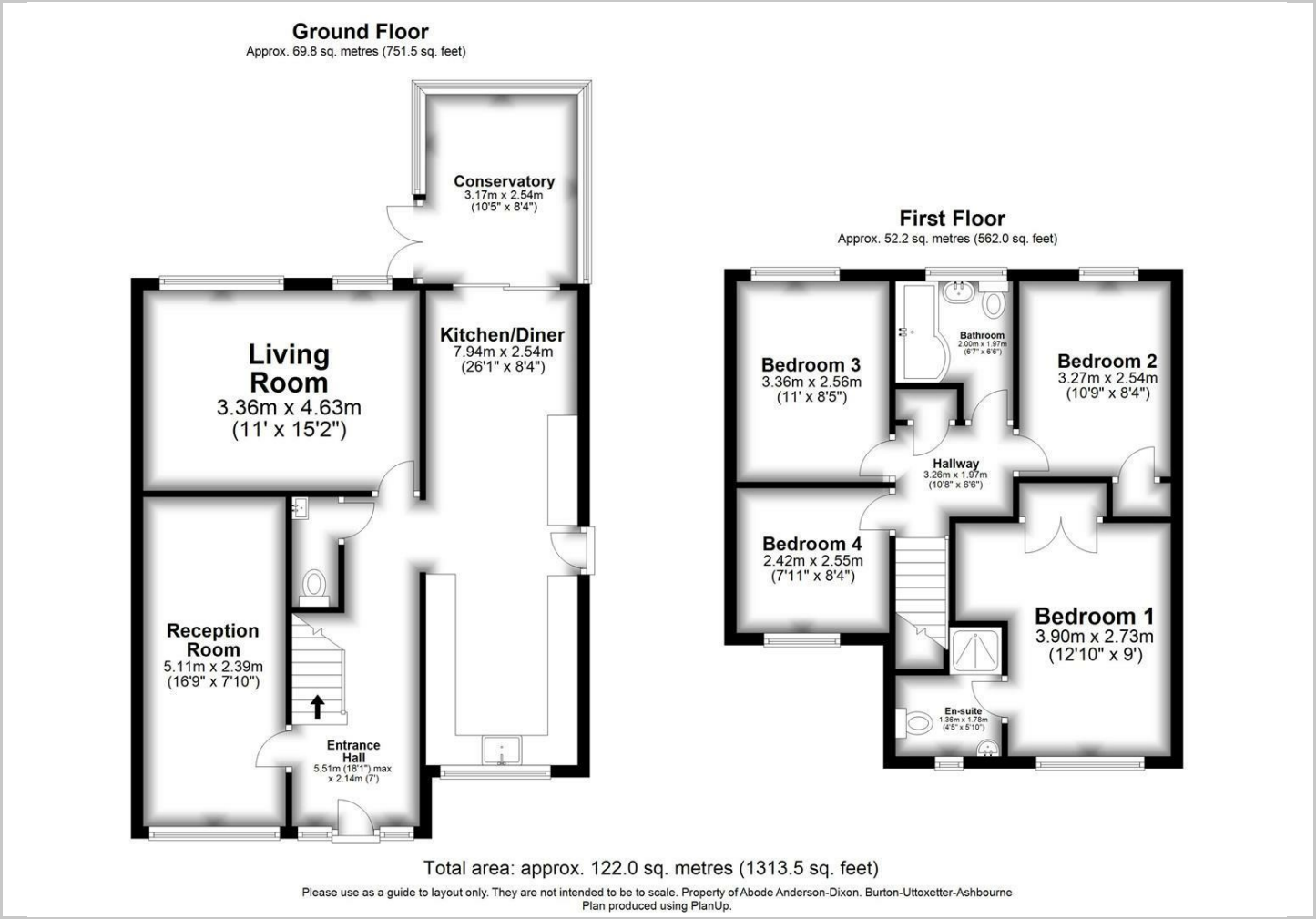








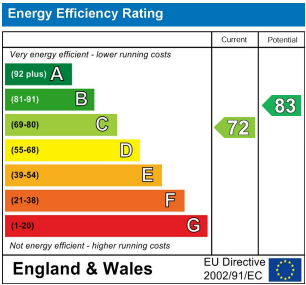
Floor Plans



Location Map



Energy Performance Graph



Please contact our Burton Lettings Office on 01283 845888 if you wish to arrange a viewing appointment for this property or require further information.

The particulars are set out as a general outline only for the guidance of intended purchasers or lessees, and do not constitute, any part of a contract. Nothing in these particulars shall be deemed to be a statement that the property is in good structural condition or otherwise nor that any of the services, appliances, equipment or facilities are in good working order. Purchasers should satisfy themselves of this prior to purchasing.