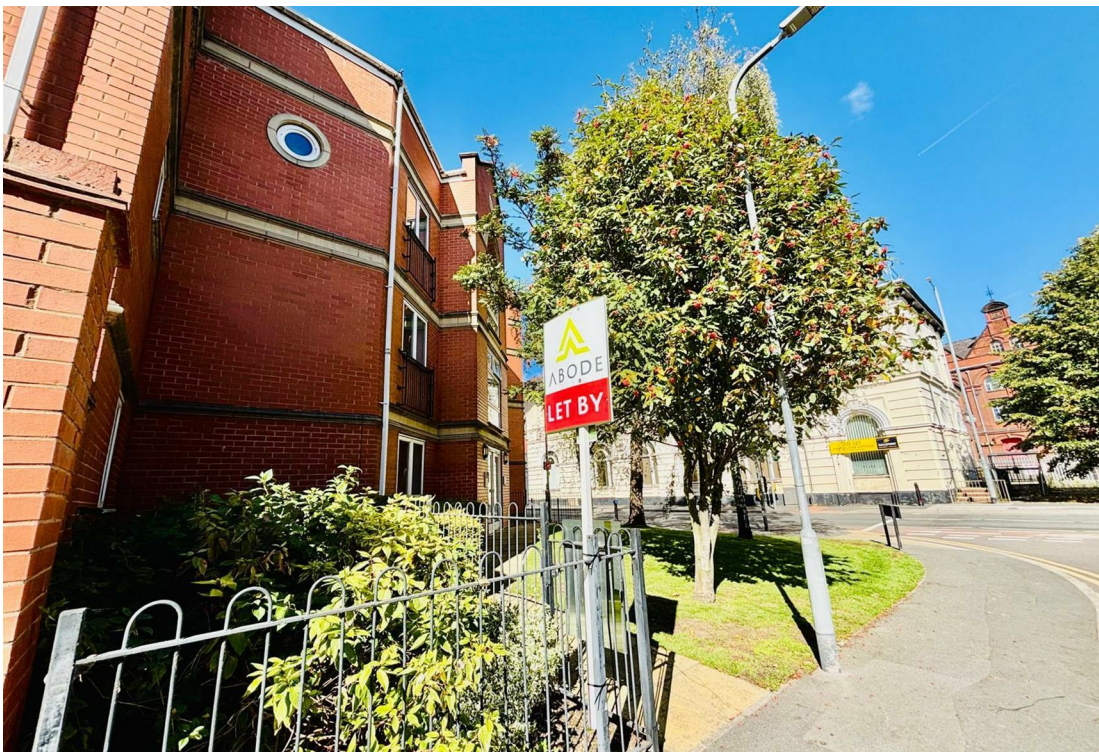


140 Grants Yard, Burton-On-Trent, DE14 1BY

£795 Per Calendar Month





Welcome to this charming two-bedroom apartment located in the heart of Burton-On-Trent, specifically at Grants Yard. This delightful second-floor residence offers a spacious open plan layout that is perfect for modern living.

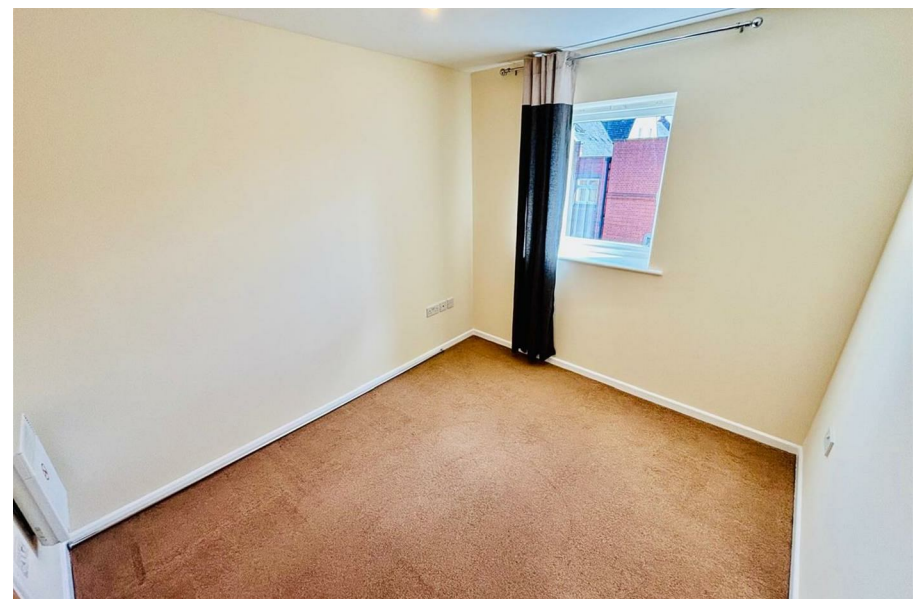
As you enter, you will be greeted by a bright and airy reception room that seamlessly flows into the kitchen area, creating an inviting atmosphere for both relaxation and entertaining. The kitchen features a convenient balcony, allowing you to enjoy fresh air and views while you prepare meals.

The apartment comprises two well-proportioned bedrooms, providing ample space for rest and personalisation. The bathroom is thoughtfully designed to cater to your daily needs.

One of the standout features of this property is the allocated private parking, ensuring that you have a secure space for your vehicle. Additionally, the apartment's prime location means you are just a stone's throw away from local amenities, making it easy to access shops, restaurants, and other conveniences.

This property is available for immediate occupancy, with a move-in date set for late September 2025.







Floor Plans

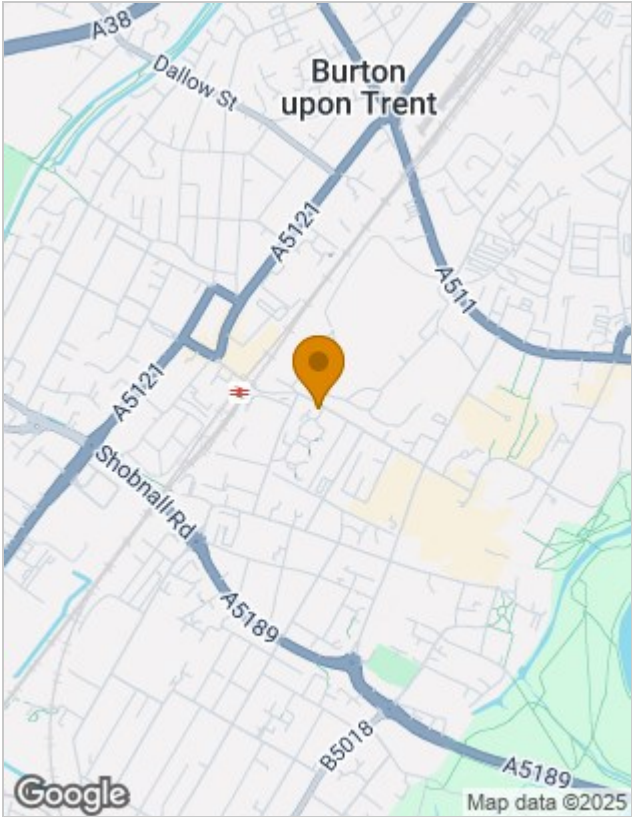


Please contact our Burton Lettings Office on 01283 845888 if you wish to arrange a viewing appointment for this property or require further information.

The particulars are set out as a general outline only for the guidance of intended purchasers or lessees, and do not constitute, any part of a contract. Nothing in these particulars shall be deemed to be a statement that the property is in good structural condition or otherwise nor that any of the services, appliances, equipment or facilities are in good working order. Purchasers should satisfy themselves of this prior to purchasing.

102 High Street, Burton-On-Trent, Staffordshire, DE14 1LJ
Tel: 01283 845888 Email: lettings@abodemidlands.co.uk <https://www.abodemidlands.co.uk>

Location Map



Energy Performance Graph

