





**** MODERN SEMI
DETACHED PROPERTY WITH
GARAGE **** Well presented
property in a popular
location offering a hall with
guest cloakroom, lounge
and fitted kitchen diner,
utility room. Three
bedrooms, en suite shower
room and a bathroom. Rear
garden, drive and garage.



HALL

Entrance door into the hall with stairs to the first floor and doors too -

CLOAKROOM

Low flush WC, wash hand basin, radiator.

LOUNGE

Three UPVC double glazed windows and a radiator.

KITCHEN DINER

Fitted wall mounted base and drawer units with work services and tiled splashback. Sink and drainer unit, fitted electric oven and a gas hob with extractor hood over. UPVC double glazed doors onto the garden radiator and a door to the utility room.

UTILITY ROOM

Fitted units with work surface, plumbing and space for a washing machine, radiator and a door to the garden.

FIRST FLOOR LANDING

UPVC double glazed window, airing cupboard and doors too -

BEDROOM 1

Wardrobes, UPVC double glazed window, radiator, door to the ensuite.

EN SUITE

Enclosed shower, low flush WC, wash hand basin, radiator.

BEDROOM 2

UPVC double glazed window and a radiator.



BEDROOM 3

UPVC double glazed window and a radiator.

BATHROOM

Panel enclosed bath, wash hand basin, low flush WC, Radiator and UPVC double glazed window.

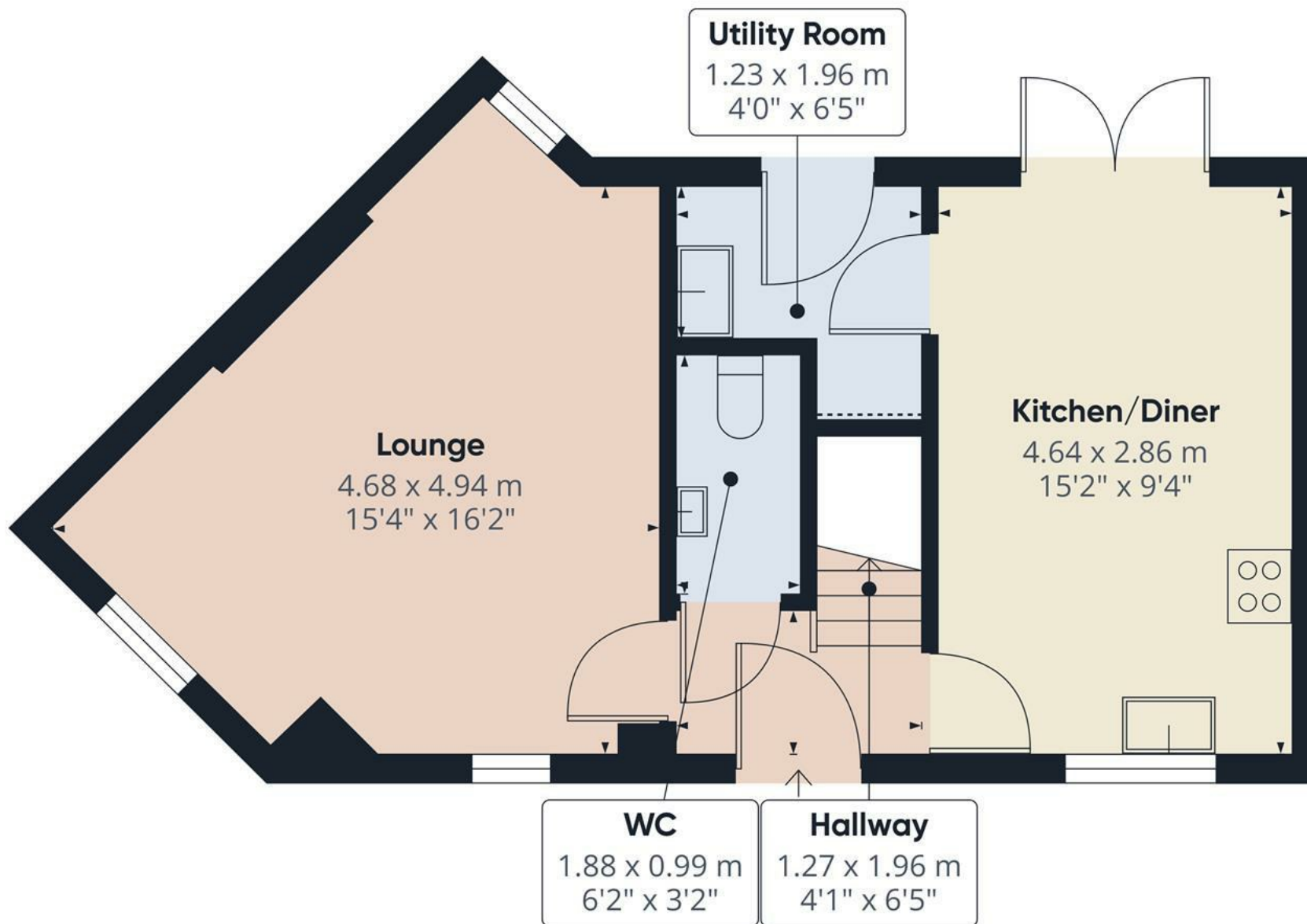
OUTSIDE

Rear drive and single garage. Enclosed rear garden with artificial lawn and paved patio.









Floor 0

Approximate total area⁽¹⁾

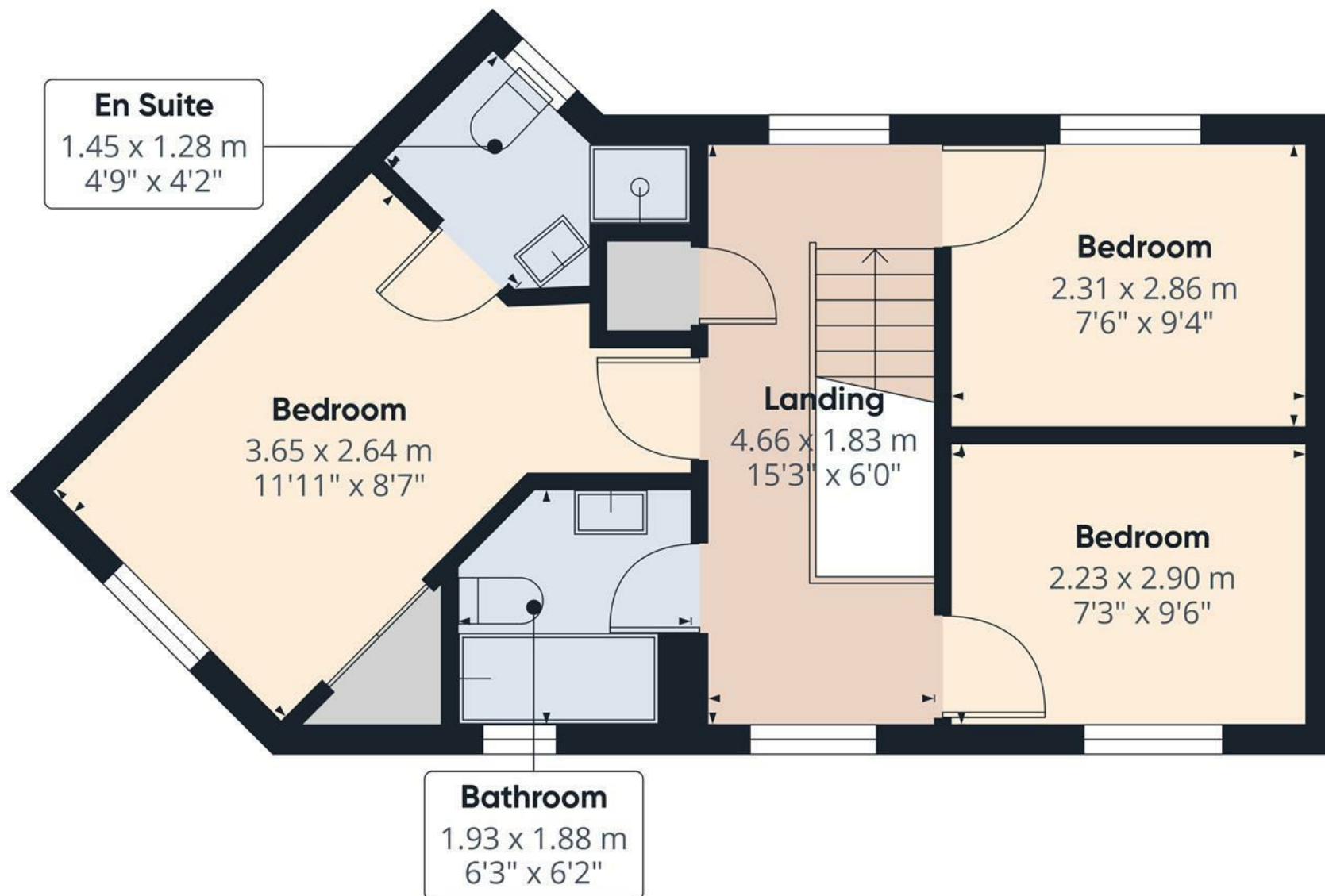
40.4 m²
434 ft²

(1) Excluding balconies and terraces

Reduced headroom
Below 1.5 m/5 ft

Calculations reference the RICS IPMS 3C standard. Measurements are approximate and not to scale. This floor plan is intended for illustration only.

GIRAFFE360



Approximate total area⁽¹⁾
38 m²
409 ft²

(1) Excluding balconies and terraces

Calculations reference the RICS IPMS 3C standard. Measurements are approximate and not to scale. This floor plan is intended for illustration only.

GIRAFFE360

