





**** SEMI DETACHED
PROPERTY IN A POPULAR
LOCATION **** REQUIRES
MODERNISATION **** This
is a great opportunity in
Hartshorne, in brief the
property offers a porch and
hall, lounge diner, kitchen
with an outhouse/utility and
wc. Three first floor
bedrooms and a bathroom,
front and rear gardens. The
property benefits from upvc
double glazed windows and
a gas heating system.



PORCH

Door into the hall.

HALL

Stairs to the first floor, radiator and doors to -

LOUNGE DINER

Upvc double glazed windows and doors onto the garden, radiators.

KITCHEN

Fitted units, work surfaces, sink unit, appliance spaces, upvc double glazed window and a door to -

LOBBY

Door to the garden and doors to -

OUTHOUSE

good storage or utility room.

CLOAKROOM

Wc.

FIRST FLOOR LANDING

Loft access, upvc double glazed window, cupboard and doors -

BEDROOM 1

Cupboard, upvc double glazed window, radiator.

BEDROOM 2

Upvc double glazed window, radiator.

BEDROOM 3

Cupboard, upvc double glazed window, radiator.

BATHROOM

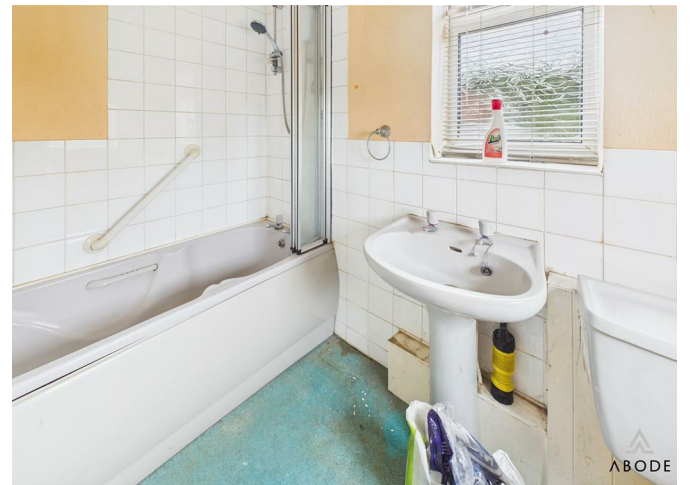
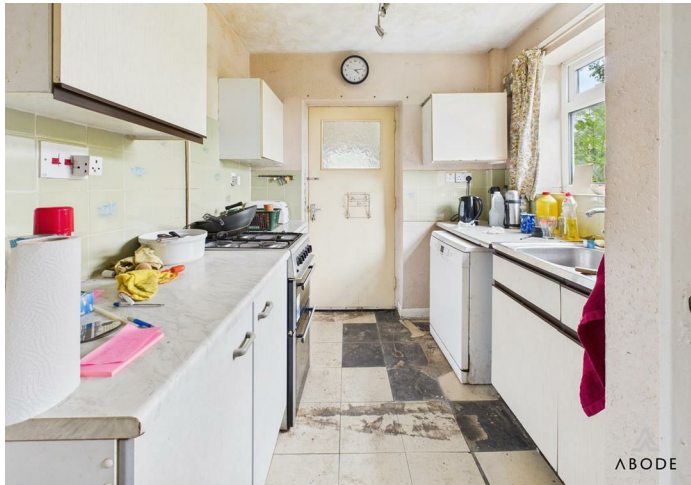
Bath, low flush wc, wash hand basin, radiator and upvc double glazed window.

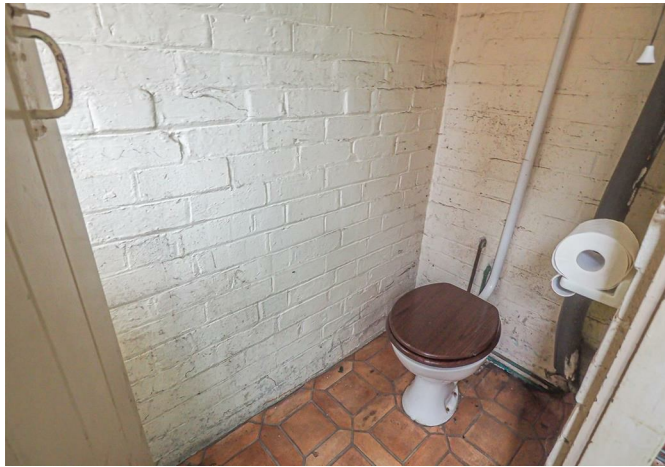
OUTSIDE

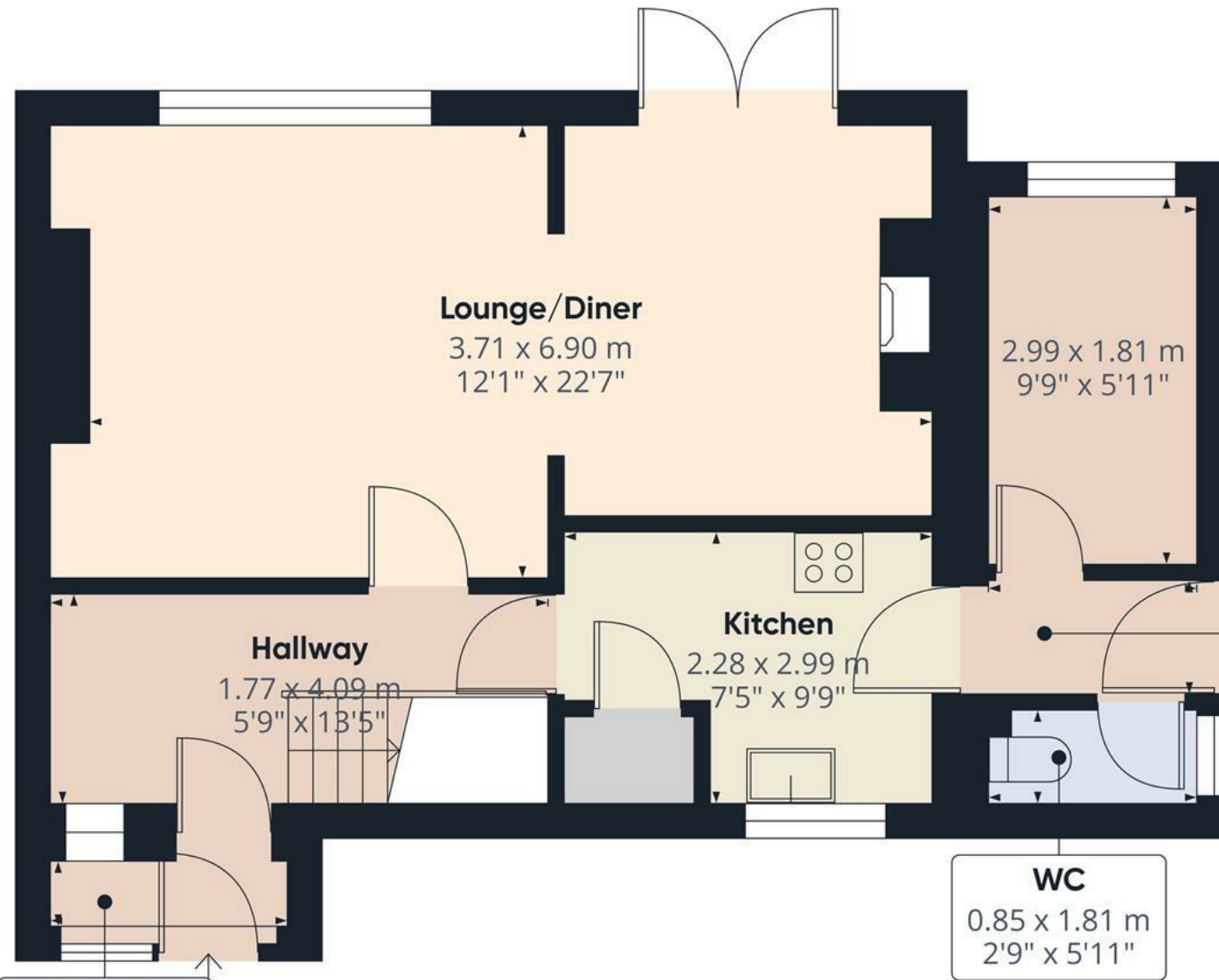


Front and rear gardens.









Approximate total area⁽¹⁾

49.1 m²

529 ft²

Hallway

0.94 x 1.83 m
3'1" x 6'0"

WC

0.85 x 1.81 m
2'9" x 5'11"

Porch

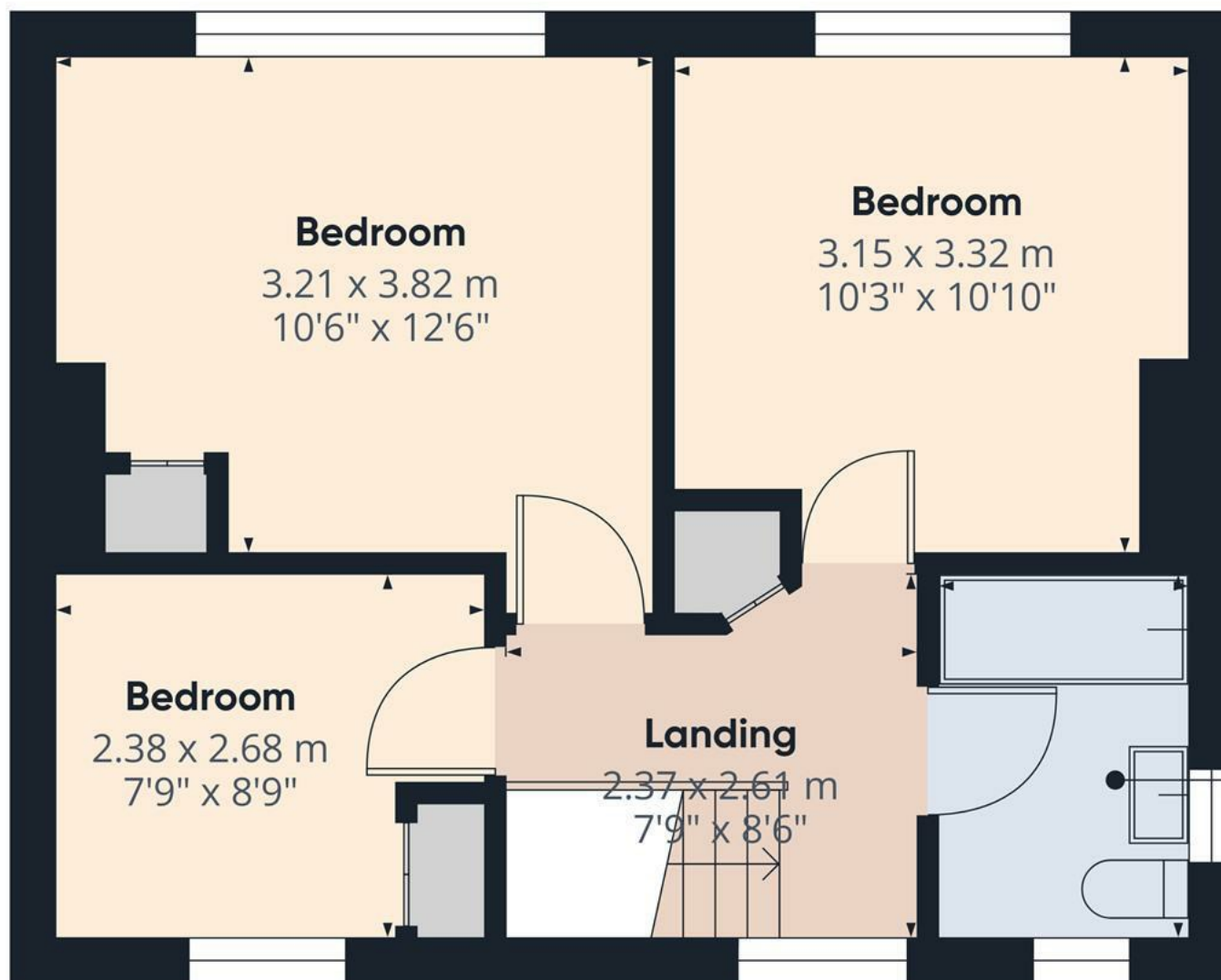
0.66 x 2.02 m
2'2" x 6'7"

(1) Excluding balconies and terraces

Calculations reference the RICS IPMS 3C standard. Measurements are approximate and not to scale. This floor plan is intended for illustration only.

GIRAFFE360

Floor 0



Floor 1

Approximate total area⁽¹⁾
36.3 m²
389 ft²

(1) Excluding balconies and terraces

Calculations reference the RICS IPMS 3C standard. Measurements are approximate and not to scale. This floor plan is intended for illustration only.

GIRAFFE360

