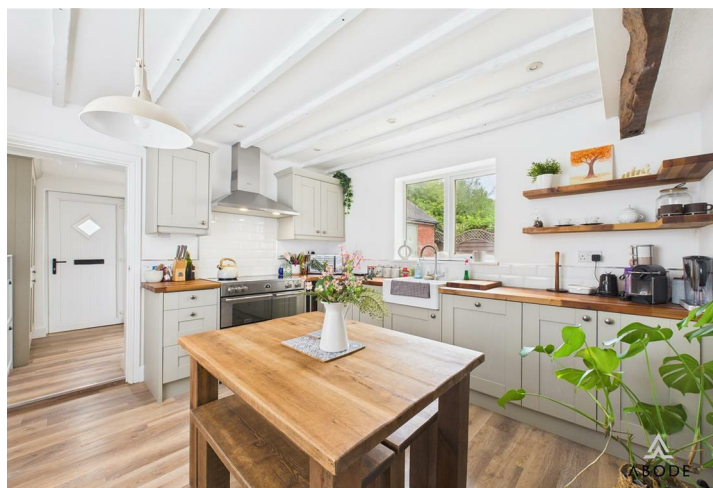






A beautifully presented three-bedroom semi-detached home situated in the desirable village of Coton-in-the-Elms, offering a thoughtfully designed interior, attractive outdoor space, and views over open countryside. The property features a modern fitted kitchen with adjoining utility room, a spacious living room opening onto the garden, three bedrooms and a modern family bathroom. Externally, there is a detached garage, driveway, lawned garden, and a raised decked seating area with views over the countryside. Its combination of character and contemporary finishes makes this an ideal home for a variety of buyers.



Ground floor

The kitchen is fitted with a range of shaker-style wall and base units complemented by wooden work surfaces, a ceramic Belfast sink, integrated oven and hob, tiled splashbacks, and space for dining table. Exposed ceiling beams add a touch of character, dual aspect windows. A separate utility room offers additional storage and space for appliances. The living room is well-proportioned with French doors leading directly to the rear garden.

First Floor

The first-floor landing leads to three bedrooms and the family bathroom. The principal bedroom is generously sized, featuring French doors with a Juliet balcony offering stunning countryside views and ample space for wardrobes. The second bedroom, also a double, is positioned to the front elevation, while the third bedroom provides a versatile space for use as a single bedroom, dressing room, or home office. The family bathroom is fitted with a modern four-piece suite comprising a panelled bath, separate corner shower enclosure, vanity wash hand basin with storage, and WC, finished with part-tiled walls and wood-effect flooring.

Outside

To the front of the property is a block-paved driveway providing off-street parking and access to a detached single garage. A side gate leads to the rear garden, which includes a level lawn, paved seating area, and steps up to a raised decked terrace, ideal for entertaining and enjoying the countryside backdrop. The garden is enclosed by fencing, offering both privacy and security.

Location



Located in the sought-after village of Coton-in-the-Elms, the property benefits from a peaceful semi-rural setting whilst remaining well connected to surrounding towns. Local amenities include a primary school, village hall, and public house, with further shopping, leisure, and dining options available in nearby Swadlincote and Burton-on-Trent. The area is well served by road links, including the A38 and A444, providing straightforward access to Derby, Lichfield, and Birmingham, making it ideal for commuters.













Approximate total area⁽¹⁾

98 m²

1055 ft²

(1) Excluding balconies and terraces

Calculations reference the RICS IPMS 3C standard. Measurements are approximate and not to scale. This floor plan is intended for illustration only.

GIRAFFE360



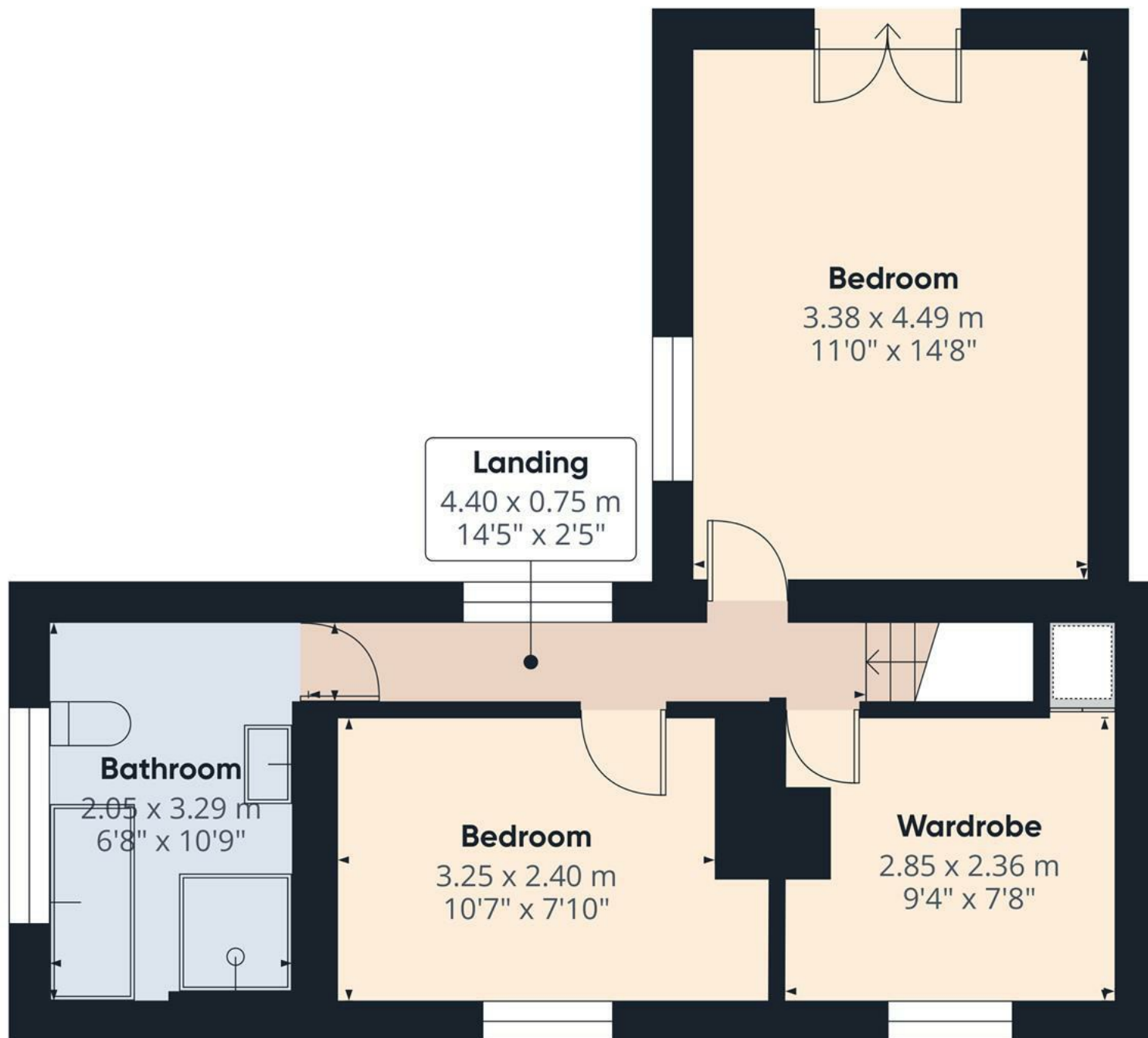
Floor 0 Building 1



Floor 1 Building 1



Floor 0 Building 2



Approximate total area⁽¹⁾

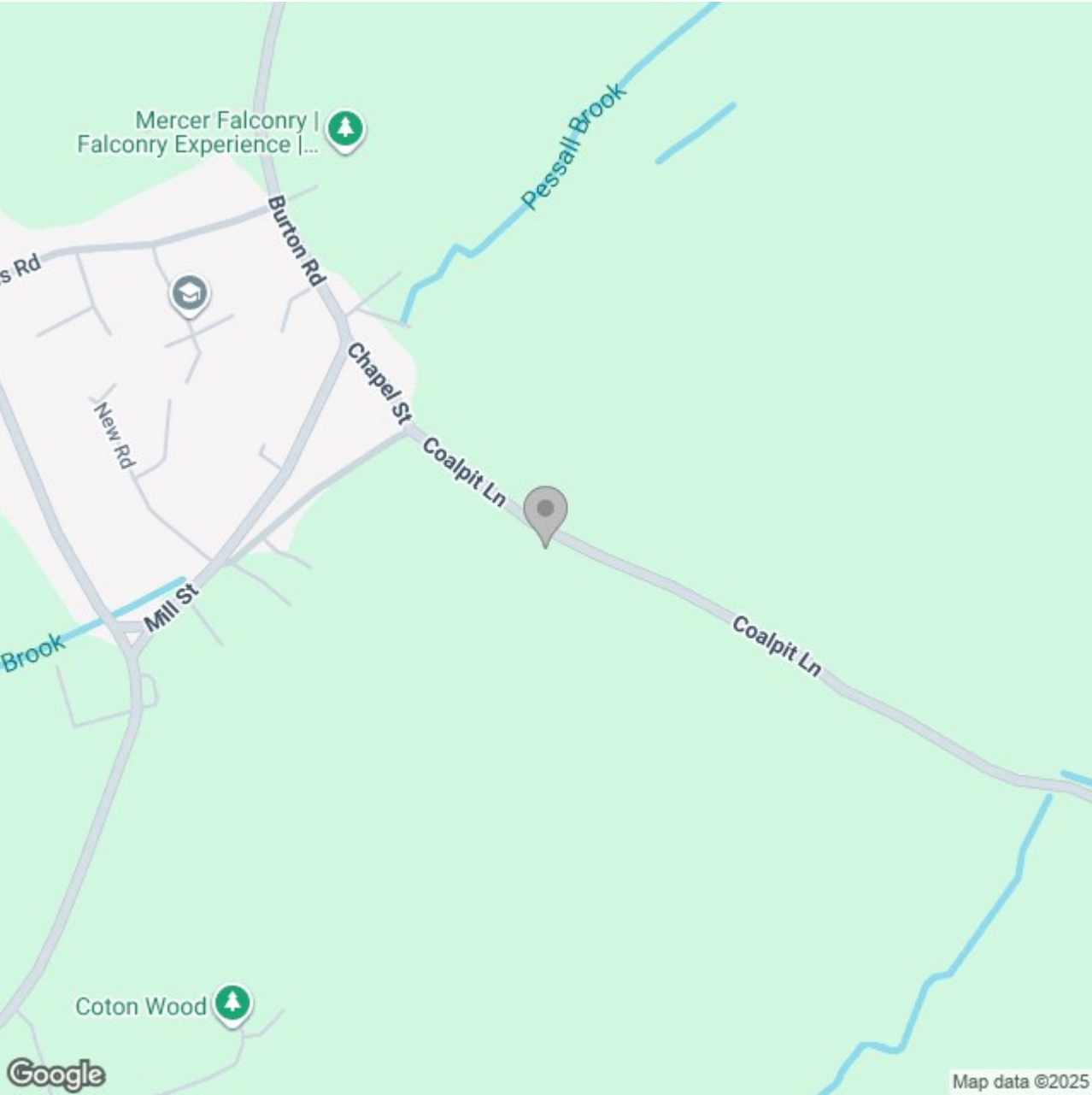
40.2 m²

433 ft²

(1) Excluding balconies and terraces

Calculations reference the RICS IPMS 3C standard. Measurements are approximate and not to scale. This floor plan is intended for illustration only.

GIRAFFE360



Energy Efficiency Rating

	Current	Potential
Very energy efficient - lower running costs		
(92 plus) A		
(81-91) B		
(69-80) C		
(55-68) D		
(39-54) E		
(21-38) F		
(1-20) G		
Not energy efficient - higher running costs		

England & Wales

EU Directive 2002/91/EC