





**** COUNTRYSIDE VIEWS
TO THE REAR **** QUIET
COURTYARD DEVELOPMENT
**** Well presented unique
property in the heart of the
highly regarded village of
Hemington. In brief the
property offers a porch and
hall, fitted kitchen, lounge
diner with doors onto the
garden and views over the
countryside. Two bedrooms
and a modern shower room.
Parking and a patio garden.
Offered for sale with no
upward chain.



PORCH

Entrance door into the porch with door into the hall and radiator.

HALL

Door to the kitchen and open into the lounge.

KITCHEN

Solid wood fitted wall mounted, base and drawer units with work surfaces and a sink unit. Space for range style cooker and fridge freezer, radiator and upvc double glazed window.

LOUNGE

Feature fireplace, radiator, upvc double glazed window and double doors to the rear with countryside views and a door to the inner hall.

INNER HALL

Loft access with pull down ladder and light, good size loft with head room. Doors to -

BEDROOM 1

Fitted wardrobes and cupboards, radiator and upvc double glazed window.

BEDROOM 2

Cupboard, radiator and upvc double glazed window.

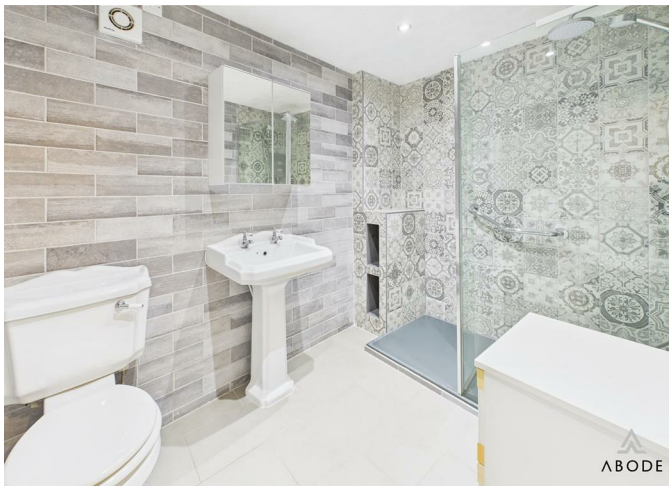
SHOWER ROOM

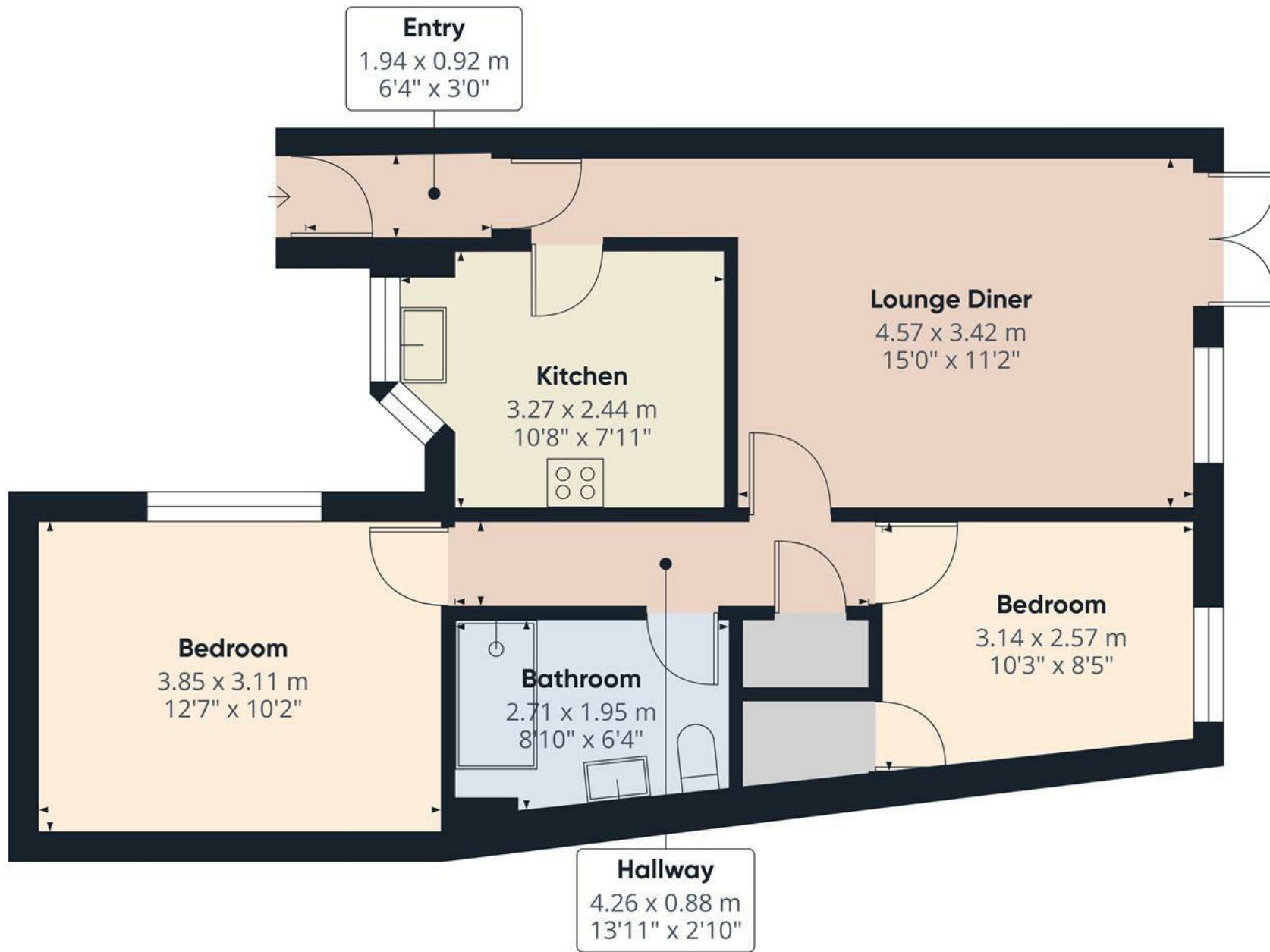
Fully tiled with walk in shower, low flush wc, wash hand basin, chrome heated towel radiator.

OUTSIDE

Parking and front paved seating area. Rear paved patio and drying area. Countryside views.







Approximate total area⁽¹⁾
57.2 m²
617 ft²

(1) Excluding balconies and terraces

Calculations reference the RICS IPMS 3C standard. Measurements are approximate and not to scale. This floor plan is intended for illustration only.

GIRAFFE360

