





The distinctive Cambridge is a four bedroom detached family home designed for the dynamics of daily life, with spacious accommodation throughout, finished to a superb standard.

Upstairs comprises a single and three double bedrooms, plus a family bathroom. The master bedroom also has an en-suite shower room.

Downstairs, family living will centre on the vast open-plan kitchen / dining area, which stretches the width of the rear of the property. This combines a fully fitted kitchen with good quality appliances and a separate utility room, with a bright, airy living / dining area with patio doors to the garden. The Cambridge also offers the sanctuary of a separate lounge away from the cut and thrust of family life, as well as a downstairs cloak.

Externally, the Arts and Crafts inspired architecture delivers real impact, with a portico roof porch to welcome your guests.



Designed with a real feel for families, the Cambridge is a first class home of the very highest quality.

HALL

CLOAKROOM

LOUNGE

16'3 x 11'11

OPEN PLAN LIVING

25'2 x 12'6

UTILITY ROOM

6'0 x 5'1

FIRST FLOOR LANDING

BEDROOM 1

13'9 x 12'8

EN SUITE

BEDROOM 2

13'4 x 11'1

BEDROOM 3

11'7 x 8'5

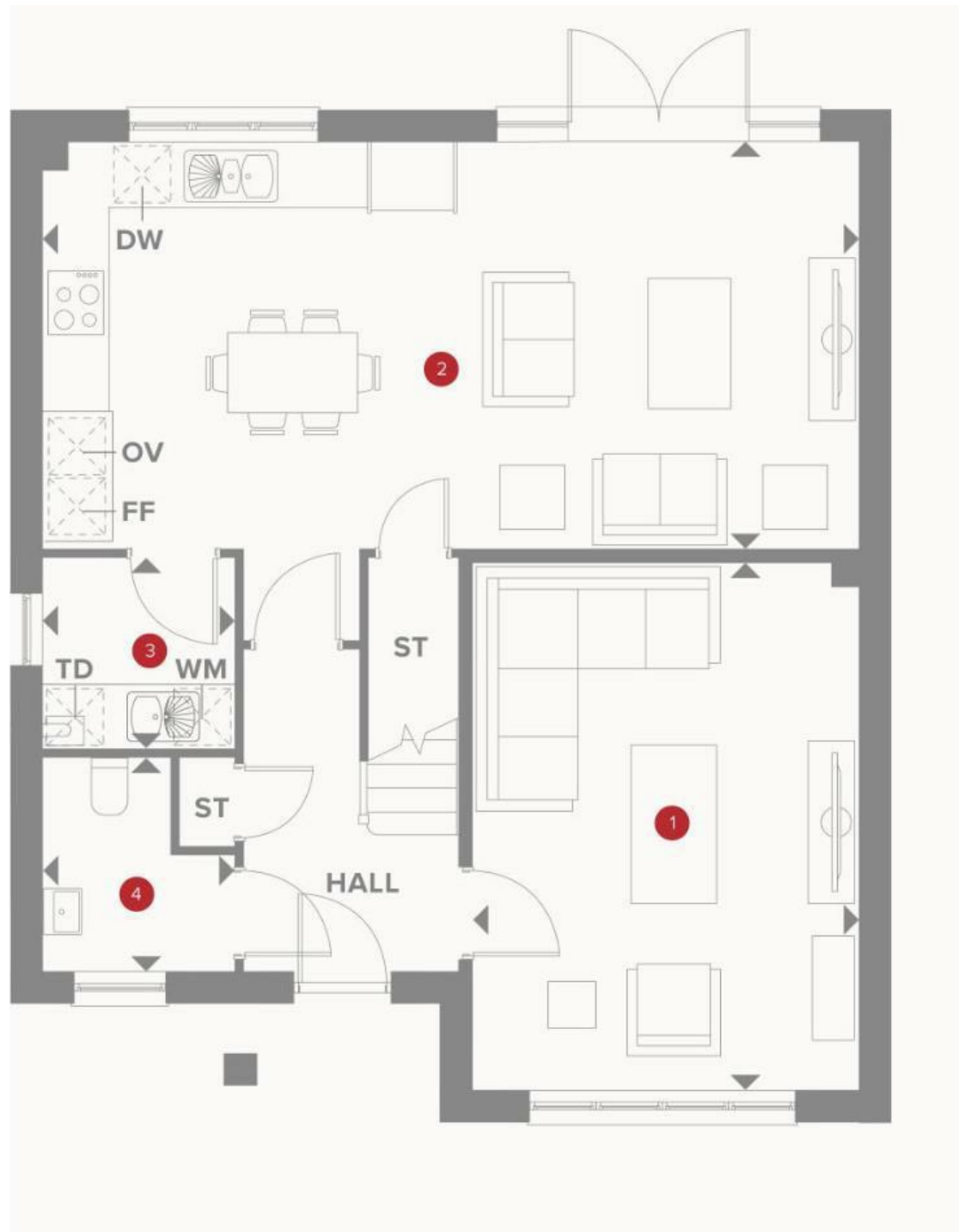
BEDROOM 4

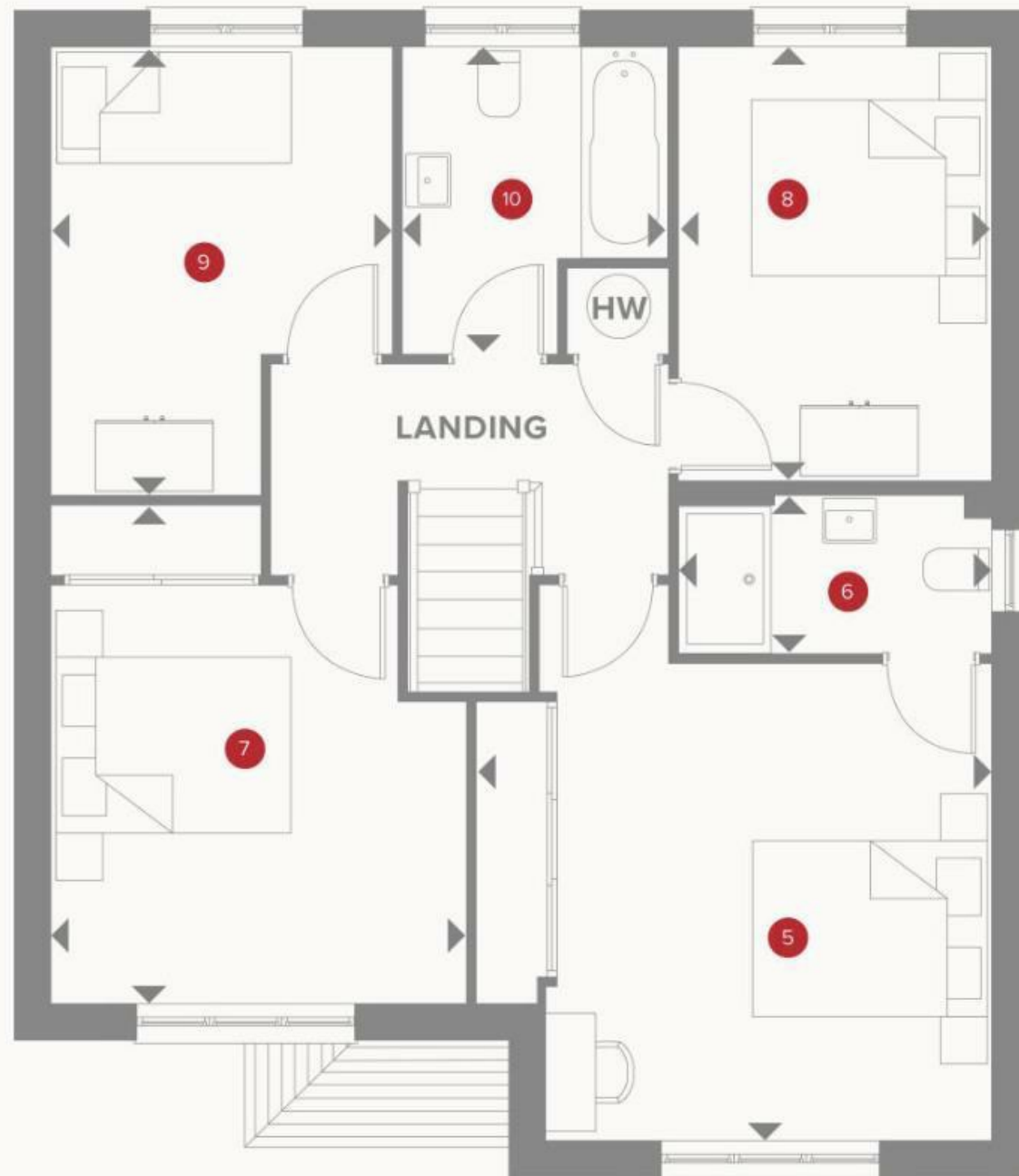
12'1 x 9'1

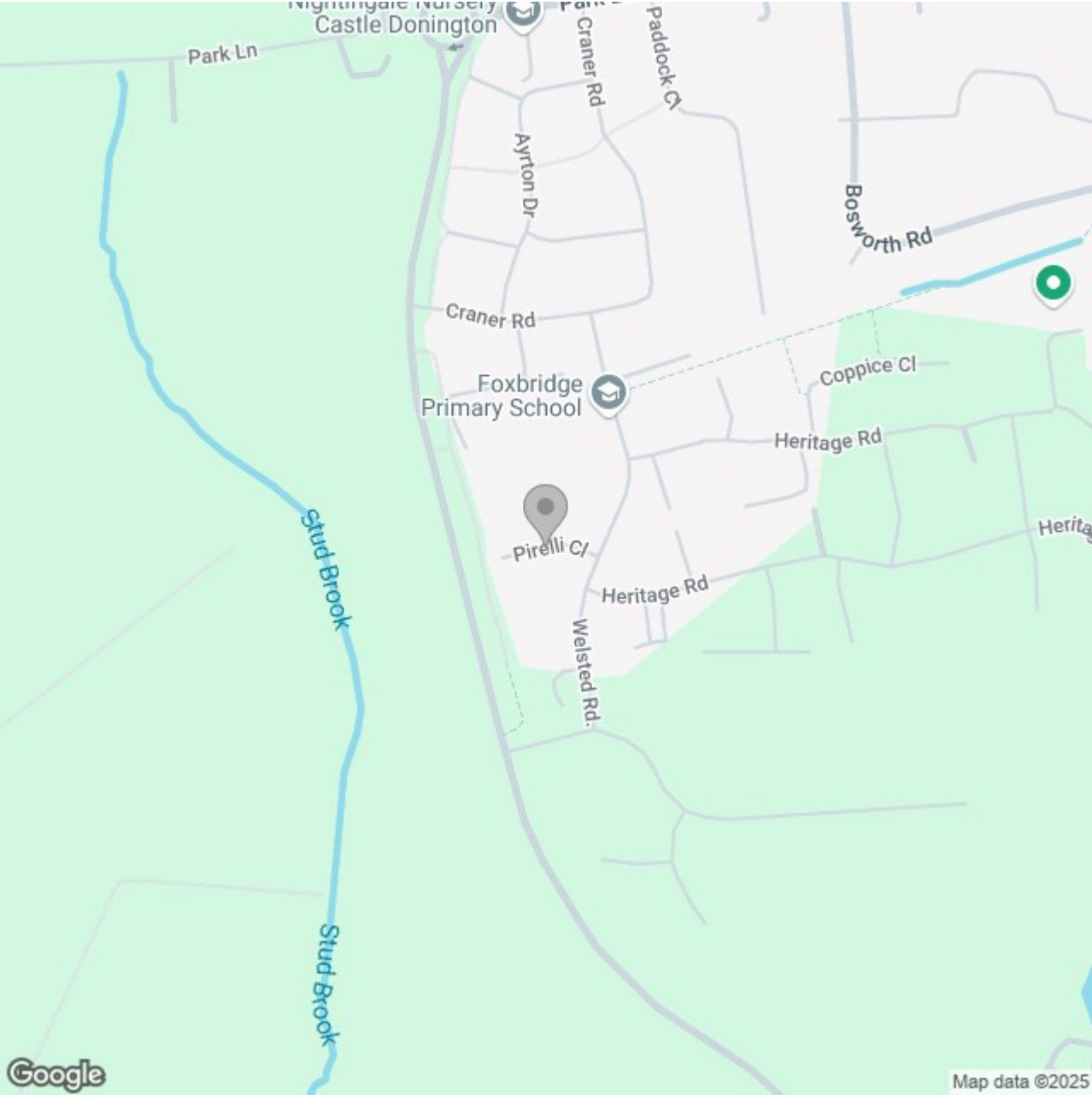
BATHROOM











Energy Efficiency Rating

	Current	Potential
Very energy efficient - lower running costs		
(92 plus) A		
(81-91) B		
(69-80) C		
(55-68) D		
(39-54) E		
(21-38) F		
(1-20) G		
Not energy efficient - higher running costs		

England & Wales

EU Directive 2002/91/EC