





**** IMMACULATE BARN
CONVERSION WITH
COUNTRYSIDE VIEWS **** FULL
OF CHARACTER AND CHARM
**** SINGLE GARAGE **** This
beautifully presented barn
conversion is set within the
highly regarded village of
Weston on Trent. In brief the
property offers an entrance
hallway, modern fitted kitchen
with built in appliances, lounge
and a snug area with doors
onto the garden. Two first floor
bedrooms and a modern family
bathroom. Landscaped gardens
parking and a single garage. A
VIEWING APPOINTMENT IS
HIGHLY RECOMMENDED.



HALL

Entrance door into the hall with stairs to the first floor, double storage cupboard, radiator, tiled floor and upvc double glazed window to the front with fitted window shutter.

KITCHEN

Fitted wall mounted base and drawer units with work surfaces and a sink unit. Fitted oven and hob with extractor, integrated fridge freezer, and washing machine. Radiator, tiled floor, upvc double glazed window to the front and an under stairs utility area with space for a tumble dryer.

LOUNGE

Feature fireplace with beam mantle and brick hearth, exposed beam, wood effect flooring, radiator, upvc double glazed window to the front with fitted window shutter, open through to -

SNUG

Exposed brick and stone, upvc double glazed double doors onto the garden.



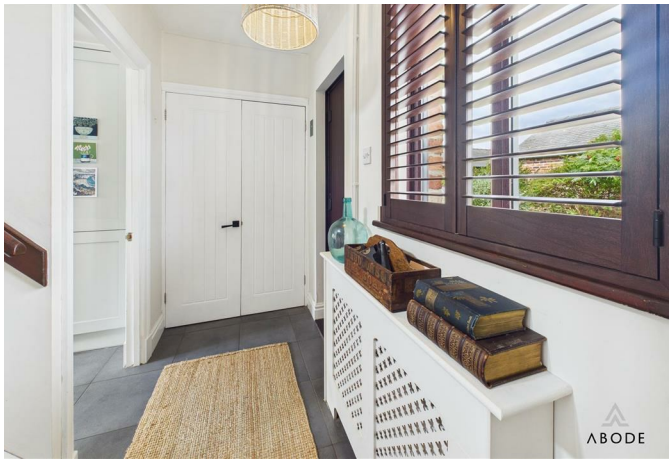
FIRST FLOOR LANDING

Upvc double glazed window to the rear with countryside views, exposed beams and doors to -

BEDROOM I

Upvc double glazed windows to the front and rear, two radiators.







BEDROOM 2

Upvc double glazed window, storage cupboard and a radiator.

BATHROOM

Panel enclosed bath with central Victoria style tap with shower attachment, vanity sink unit with wash hand basin and storage under, chrome heated towel radiator and a upvc double glazed window to the rear.



GARAGE

Single garage in a block with parking in front.

OUTSIDE

Front lawn with lawn and flat stone path. The rear garden is enclosed offering block paved patio, lawn, established shrubs, green house and a rear gate to the fields and local walks.

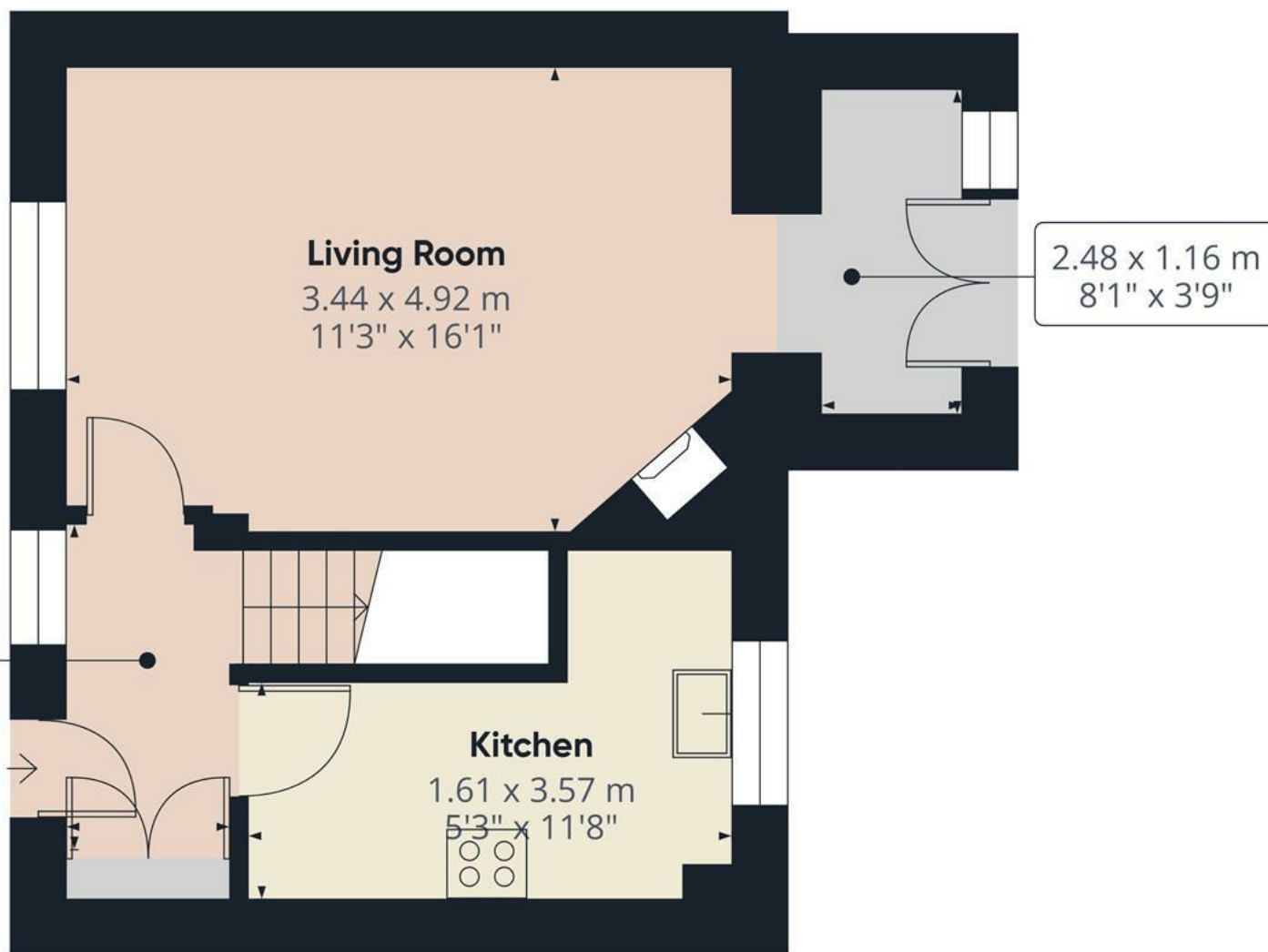












Approximate total area⁽¹⁾

31.3 m²

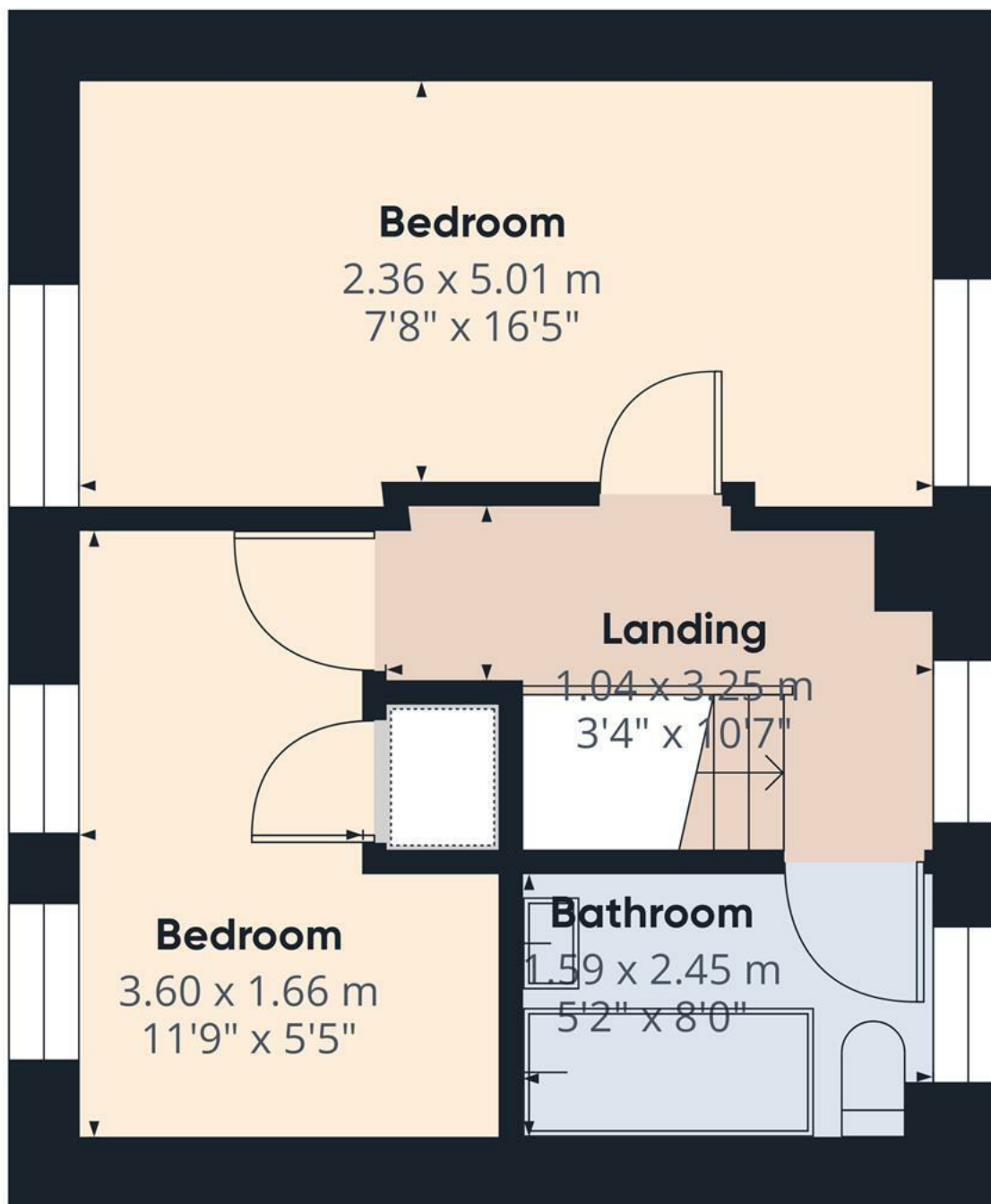
336 ft²

(1) Excluding balconies and terraces

Calculations reference the RICS IPMS 3C standard. Measurements are approximate and not to scale. This floor plan is intended for illustration only.

GIRAFFE360

Floor 0



Floor 1

Approximate total area⁽¹⁾
27.9 m²
301 ft²

(1) Excluding balconies and terraces

Calculations reference the RICS IPMS 3C standard. Measurements are approximate and not to scale. This floor plan is intended for illustration only.

GIRAFFE360

