



2 Harvey Place

Uttoxeter, ST14 7AN

**** THREE BEDROOMS ** LARGE GARDENS ** HOT TUB INCLUDED ****

A beautifully presented three bedroom traditional property, benefitting from high quality accommodation, extensive gardens and large parking frontage. The property has been well maintained throughout and has uPVC double glazing throughout and gas central heating. In brief, the property comprises hallway, lounge, kitchen/diner, shower room and three bedrooms. Externally, the tarmac driveway provides off-road parking for several vehicles. To the rear, the gardens are mainly laid to lawn with entertaining patio and timber built outbuilding, housing the hot tub.

The property is conveniently located within easy access to local amenities such as shops, schools, leisure centre and still only a short walk to the centre of Uttoxeter. Easy access to A50 which links all major road links. Viewings are strictly by appointment only and can be arranged by contacting Abode Estate Agents.

£210,000

2 Harvey Place

Uttoxeter, ST14 7AN



- LARGE GARDEN
- HOT TUB
- GAS CENTRAL HEATING
- UPVC DOUBLE GLAZING
- RECENTLY REDONE FACIAS

Hallway

Lounge

Inner Hallway

Kitchen/Diner

Bathroom

Landing

Bedroom One

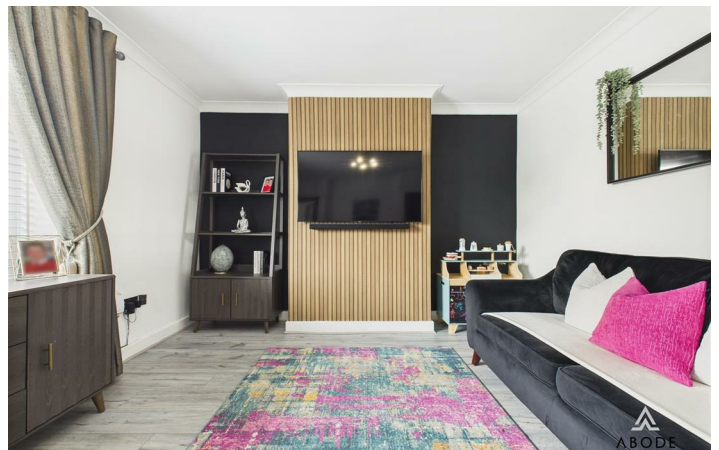
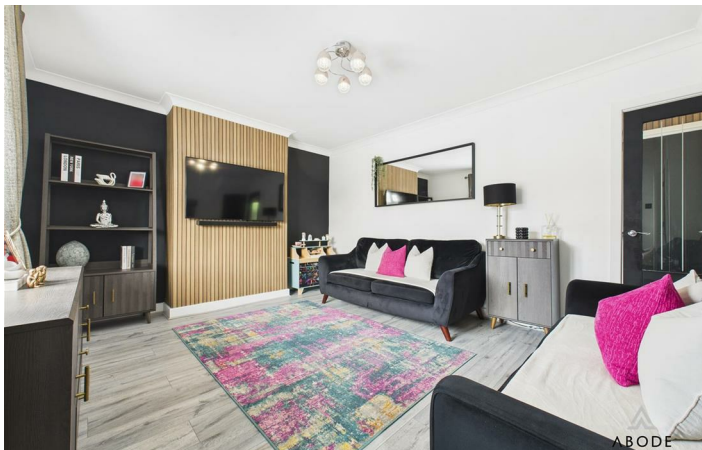
Bedroom Two

Bedroom Three

Outside



Directions



Floor Plan



These particulars, whilst believed to be accurate are set out as a general outline only for guidance and do not constitute any part of an offer or contract. Intending purchasers should not rely on them as statements of representation of fact, but must satisfy themselves by inspection or otherwise as to their accuracy. No person in this firms employment has the authority to make or give any representation or warranty in respect of the property.

