

48 Harbury Street, Burton Upon Trent, DE13 0RY

£950 PCM







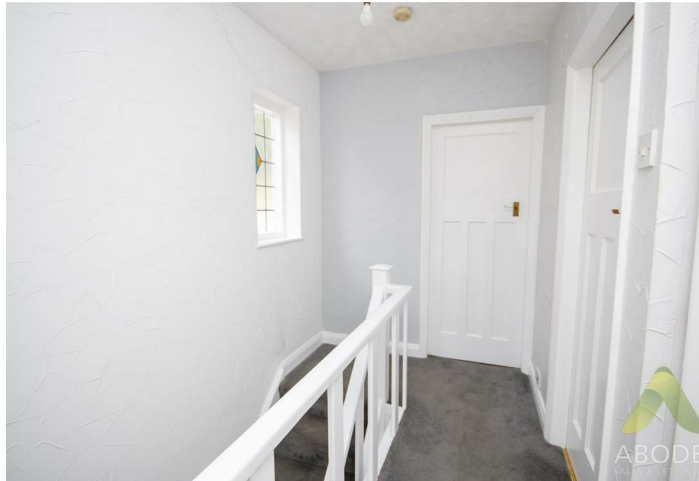
ABODE Lettings are pleased to offer for rental this three bedroom semi-detached family home, situated within at Burton upon Trent.

Spacious throughout, this is a rare opportunity to secure a lovely family home in a much sought after location which offers superb local amenities including Burton Queens Hospital, Schooling, leisure activities and road links.

In brief, the accommodation provides - Large kitchen/diner with a great selection of wall and base units. Good size lounge with feature large window.

The first floor provides two double size bedrooms and a further single bedroom. These rooms are serviced by a shower room.

Off road parking and mature planting to frontage with tiered garden to rear including large storage area.









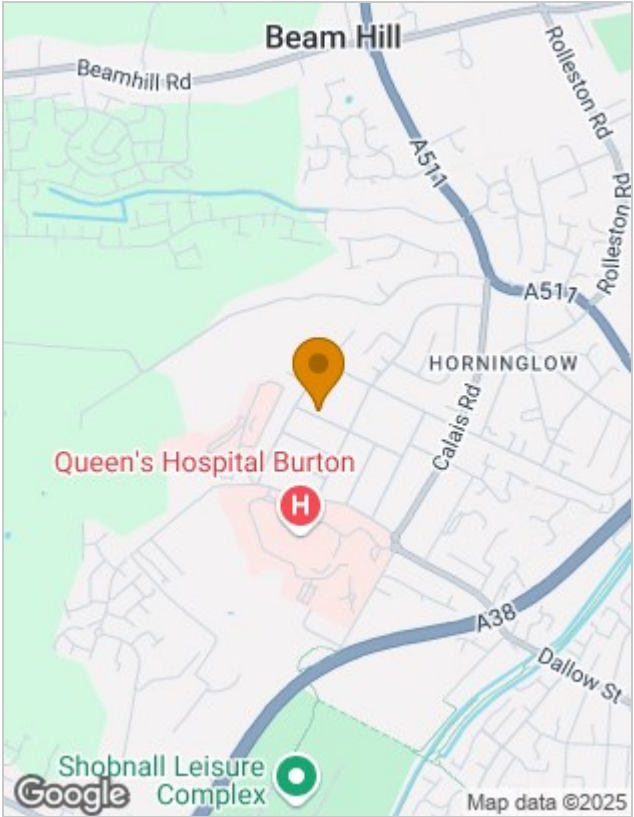




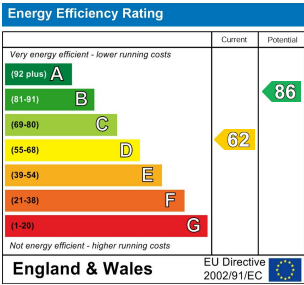
Floor Plans



Location Map



Energy Performance Graph



Please contact our Burton Lettings Office on 01283 845888 if you wish to arrange a viewing appointment for this property or require further information.

The particulars are set out as a general outline only for the guidance of intended purchasers or lessees, and do not constitute, any part of a contract. Nothing in these particulars shall be deemed to be a statement that the property is in good structural condition or otherwise nor that any of the services, appliances, equipment or facilities are in good working order. Purchasers should satisfy themselves of this prior to purchasing.