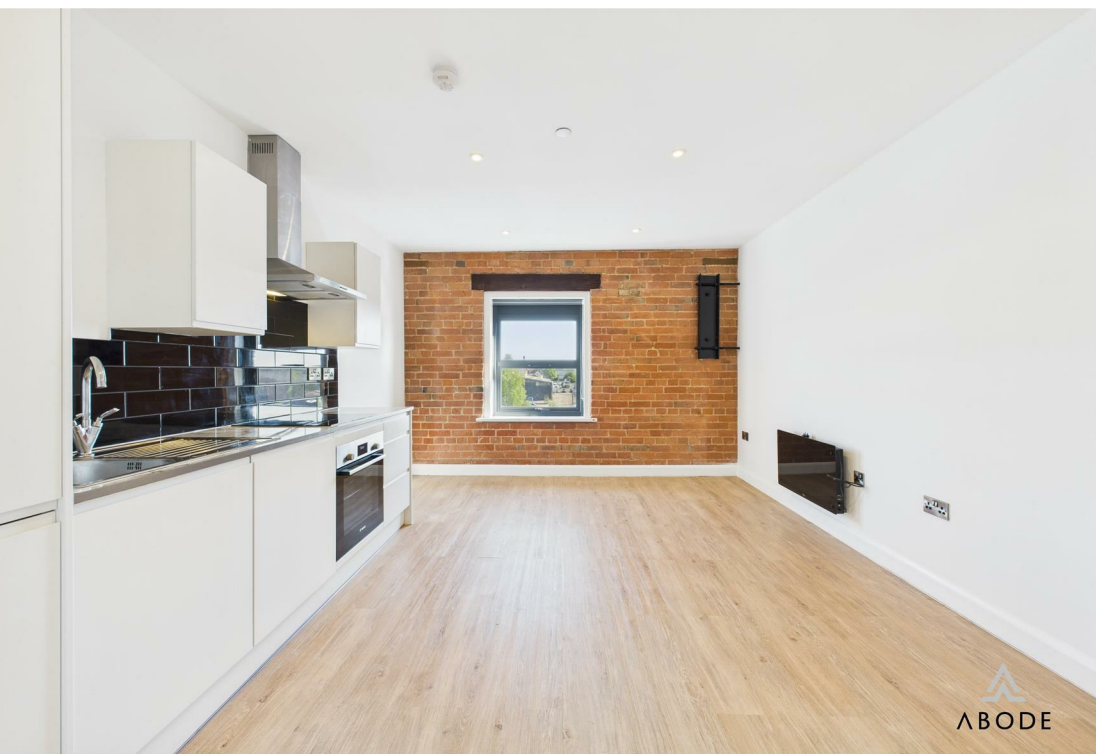


77 The Maltings Wetmore Road, Burton-On-Trent, DE14 1SE

£750 PCM



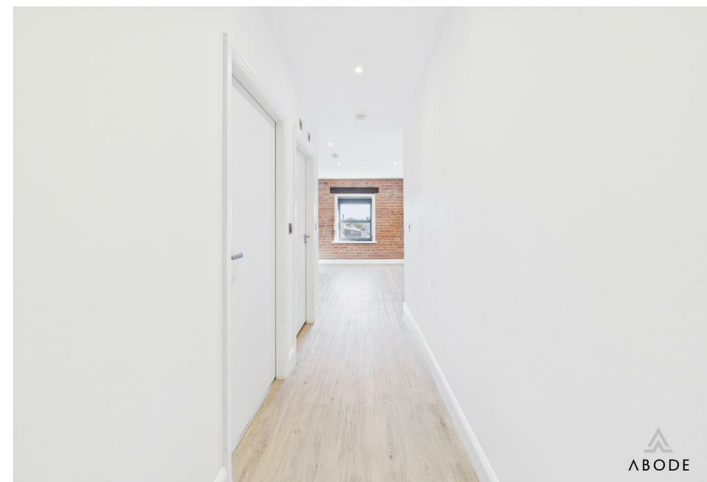
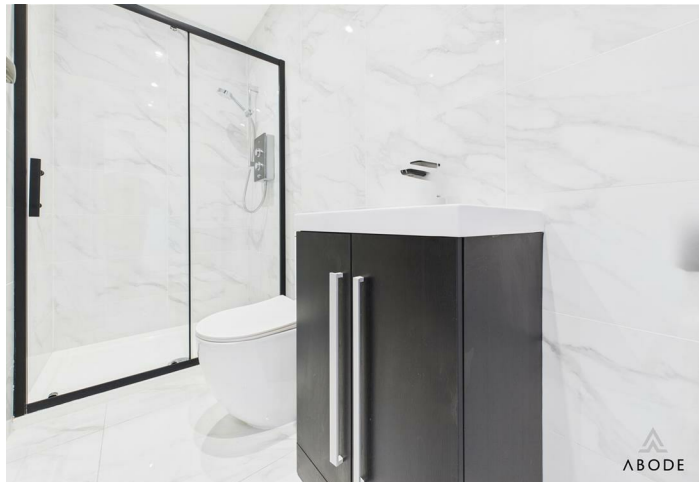


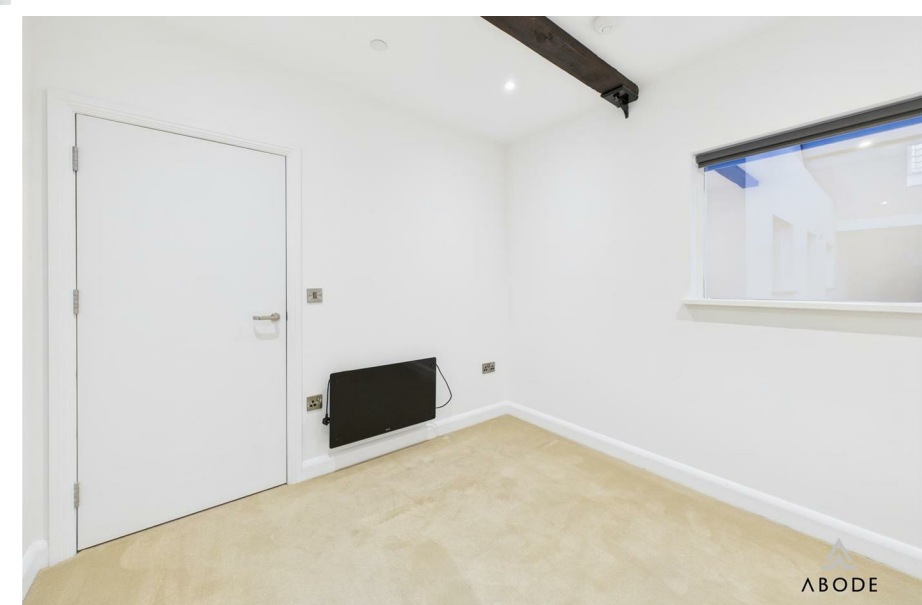
A beautifully presented one-bedroom apartment set within a converted Grade II listed Malthouse, featuring exposed brickwork and original open beams that highlight its historic charm.

Blending character with contemporary design, this stylish home offers a spacious open-plan living area with a modern fitted kitchen. The apartment includes a generously sized double bedroom and a bright, fully tiled shower room.

Residents benefit from a welcoming communal reception area and a striking central atrium with indoor gardens. Conveniently located within walking distance of Burton-on-Trent town centre.

Allocated parking is included. EPC rating: D. Available immediately.



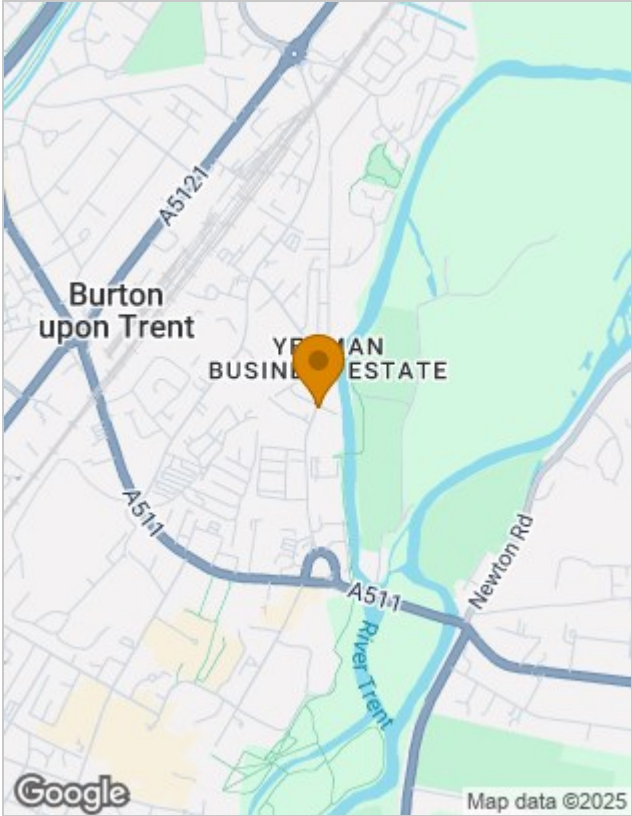




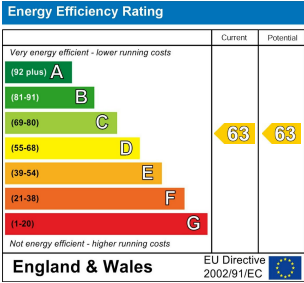
Floor Plans



Location Map



Energy Performance Graph



Please contact our Burton Lettings Office on 01283 845888 if you wish to arrange a viewing appointment for this property or require further information.

The particulars are set out as a general outline only for the guidance of intended purchasers or lessees, and do not constitute, any part of a contract. Nothing in these particulars shall be deemed to be a statement that the property is in good structural condition or otherwise nor that any of the services, appliances, equipment or facilities are in good working order. Purchasers should satisfy themselves of this prior to purchasing.