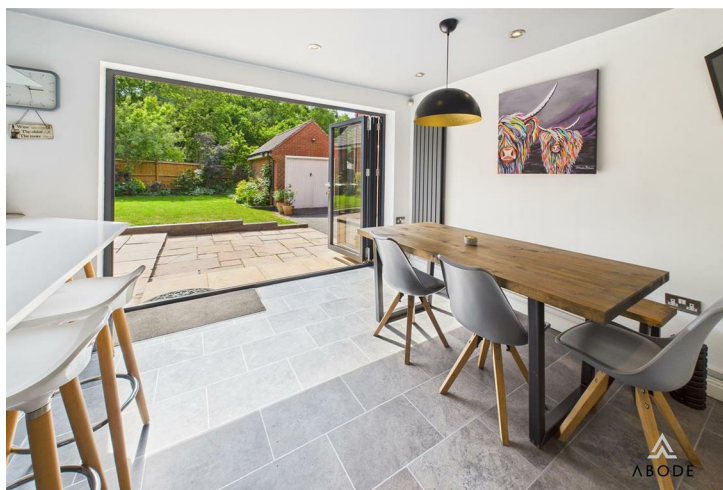






**** DECEPTIVE FOUR
BEDROOM DETACHED HOME
**** MODERN FITTED DINING
KITCHEN WITH BIFOLD DOORS
ONTO A PRIVATE REAR GARDEN
OVERLOOKING WOODLAND.

**** This well presented
property offers a large
reception hall, guest cloakroom,
lounge and a fitted dining
kitchen with bifold doors onto
the garden. Four first floor
bedrooms, master with en suite
and a family bathroom with
bath and a shower. Side drive
with gates to a single garage,
enclosed rear garden
overlooking a woodland.



RECEPTION HALL

Large space offering flexible use with a radiator double storage cupboard, stairs to the first floor and doors to -

CLOAKROOM

Wash hand basin, low flush wc, chrome ladder style, radiator and upvc double glazed window.

LOUNGE

Double half glazed doors from the hall, feature fireplace, upvc double glazed windows and a radiator.

FITTED DINING KITCHEN

Modern fitted wall mounted, base and drawer units with work surfaces and a sink and drainer unit. Fitted double oven and hob,

FIRST FLOOR LANDING

Upvc double glazed window, radiator, loft access and doors to -

BEDROOM 1

Wardrobes, upvc double glazed windows, radiator and door to -

EN SUITE

Enclosed shower, low flush wc wash hand basin, radiator and upvc double glazed window.

BEDROOM 2

Upvc double glazed window, wardrobes and radiator.



BEDROOM 3

Upvc double glazed window, wardrobes and radiator.

BEDROOM 4

Upvc double glazed window and radiator.







BATHROOM

Panel enclosed bath, low flush wc., shower cubicle, wash hand basin, radiator and upvc double glazed window.

OUTSIDE

Side drive with double gates leading to further parking and a single garage with up and over door. The rear garden offers a lawn with mature borders, paved patio area and views over the woodland.

