



The Hayfield Acresford Park

Tuppenhurst Lane, Handsacre, WS15 4HH

The Hayfield – A Thoughtfully Designed Family Home

Introducing The Hayfield, a perfectly proportioned three-bedroom semi-detached home, newly released and designed with modern living in mind. This elegant property offers a generous lounge ideal for unwinding, while the spacious kitchen/dining area—with stylish French doors opening onto a south-west facing garden—provides the perfect space for entertaining. Upstairs, three well-sized bedrooms and a beautifully appointed family bathroom create a comfortable and practical environment for everyday life. With a private driveway offering parking for two vehicles, The Hayfield is the ideal home for growing families or those simply seeking space and style.

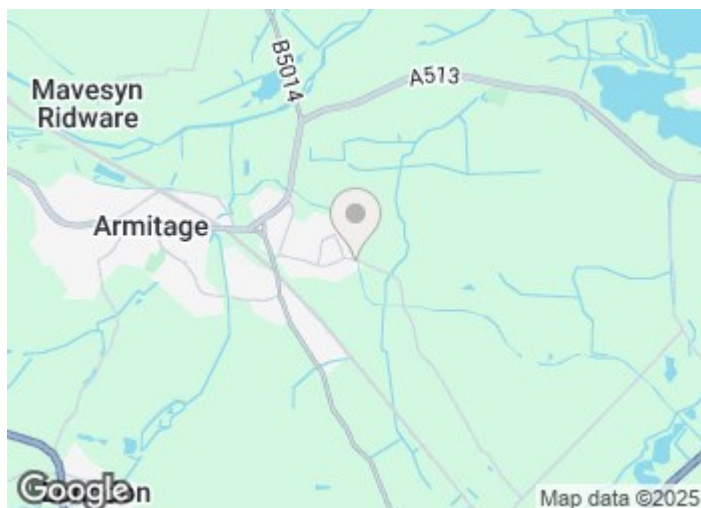
£269,995

The Hayfield Acresford Park

Tuppenhurst Lane, Handsacre, WS15 4HH



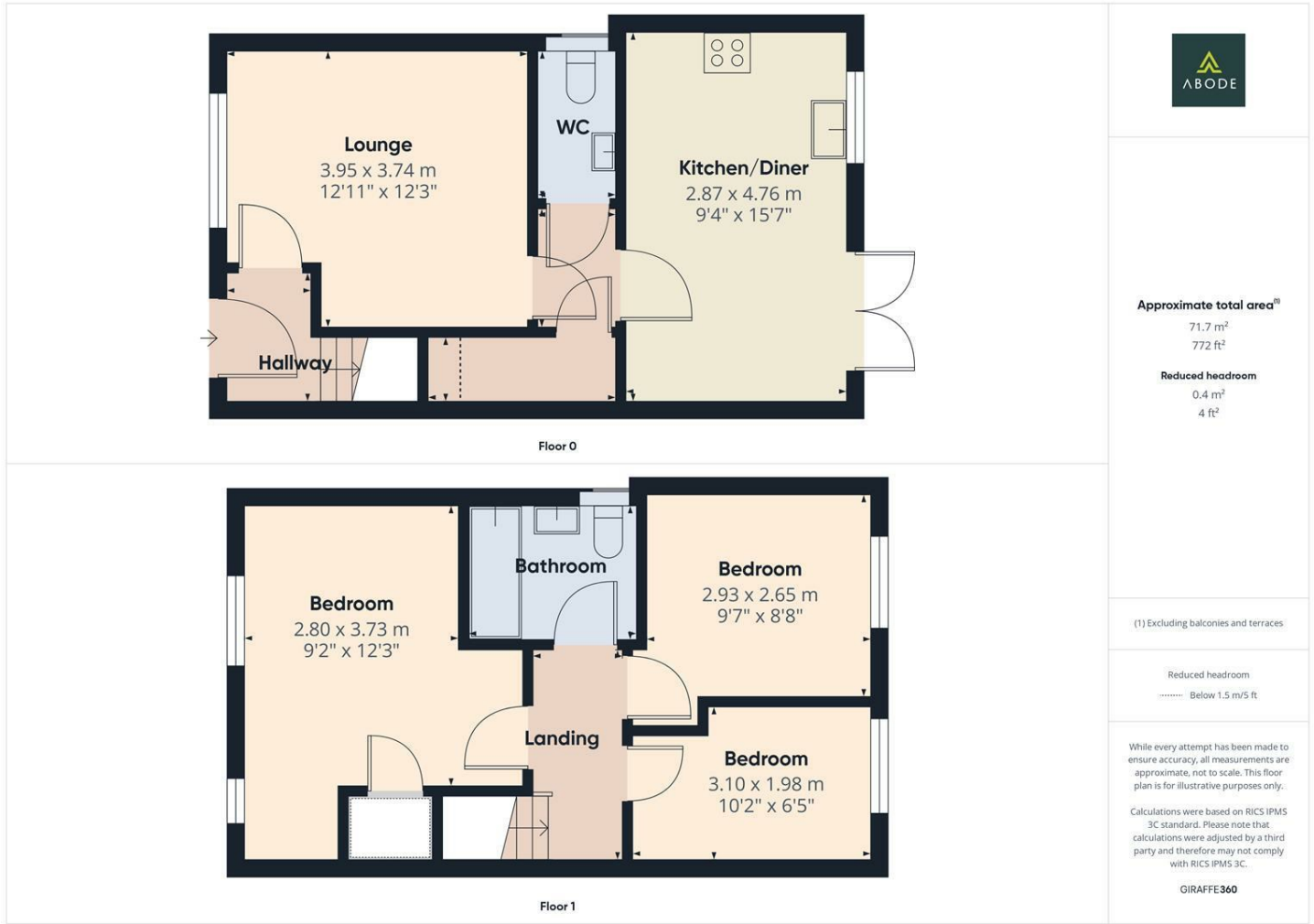
Walton Homes



Directions



Floor Plan



These particulars, whilst believed to be accurate are set out as a general outline only for guidance and do not constitute any part of an offer or contract. Intending purchasers should not rely on them as statements of representation of fact, but must satisfy themselves by inspection or otherwise as to their accuracy. No person in this firms employment has the authority to make or give any representation or warranty in respect of the property.

Energy Efficiency Rating		
	Current	Potential
Very energy efficient - lower running costs		
(92 plus) A		
(81-91) B		
(69-80) C		
(55-68) D		
(39-54) E		
(21-38) F		
(1-20) G		
Not energy efficient - higher running costs		
England & Wales		
EU Directive 2002/91/EC		