





**** WELL PRESENTED THREE BEDROOM
WITH A LOVELY GARDEN AND AN OPEN
ASPECT TO THE FRONT **** Entrance
hall, lounge and diner, fitted modern
kitchen, three bedrooms and a
bathroom. Parking and single garage,
good size rear garden. INTERNAL
VIEWING RECOMMENDED



HALL

Stairs to the first floor, radiator, storage cupboard and doors to -

LOUNGE

Feature fireplace with electric fire, radiator and upvc double glazed window.

DINER

Upvc double glazed doors onto the garden, radiator.

KITCHEN

Fitted units with work surfaces and a sink and drainer unit. Fitted oven, hob and extractor, space and plumbing for a washing machine, upvc double glazed window and door to the garden.

FIRST FLOOR LANDING

Loft access, doors to -

BEDROOM 1

Upvc double glazed window and radiator.

BEDROOM 2

Upvc double glazed window and radiator.

BEDROOM 3

Upvc double glazed window and radiator.

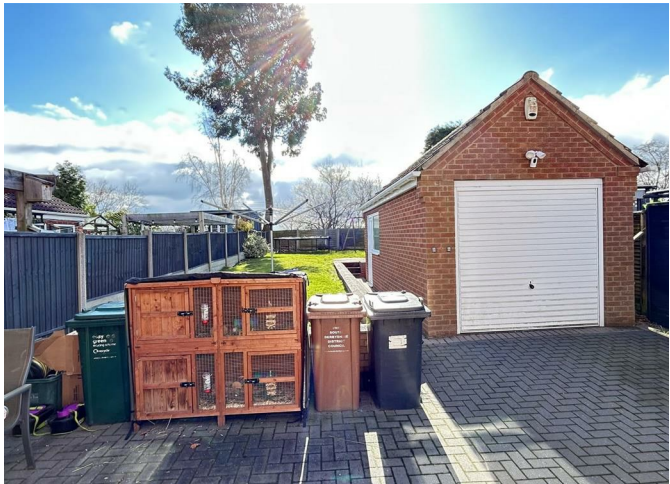
BATHROOM

P'shaped bath with a shower and shower screen, wash hand basin, low flush wc, radiator and upvc double glazed window.

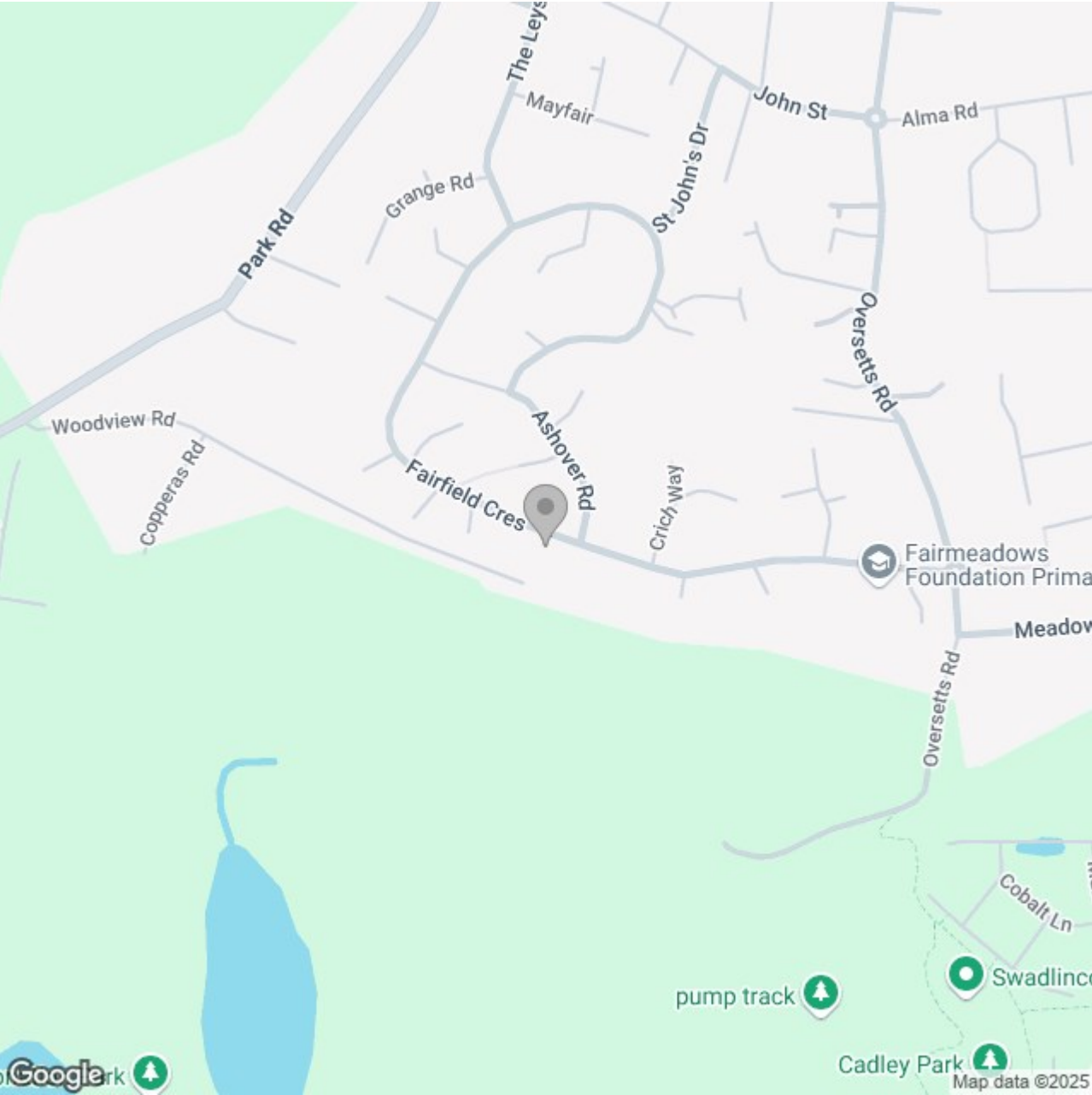
OUTSIDE

Front and side parking, gates to the rear garden with lawn and seating areas and a single garage.









Energy Efficiency Rating

	Current	Potential
Very energy efficient - lower running costs		
(92 plus) A		
(81-91) B		
(69-80) C		
(55-68) D		
(39-54) E		
(21-38) F		
(1-20) G		
Not energy efficient - higher running costs		

England & Wales

EU Directive 2002/91/EC