







\*\*\*\* STUNNING  
LANDSCAPED GARDEN \*\*\*\*  
IMMACULATE FOUR  
BEDROOM HOMES \*\*\*\*  
Detached family home  
offering an entrance hall  
with guest cloakroom, good  
size lounge, fitted dining  
kitchen with doors onto the  
garden. Four first floor  
bedrooms, master with an  
en suite shower room and a  
family bathroom. Side drive  
and a single garage.





## HALL

Entrance door into the hall with stairs to the first floor, radiator and doors to -

## CLOAKROOM

Low flush wc, wash hand basin, radiator and upvc double glazed window.

## LOUNGE

Upvc double glazed window and a radiator.

## KITCHEN DINER

Fitted wall mounted, base and drawer units with work surfaces and a sink and drainer unit. Fitted electric oven and microwave oven, gas hob and extractor, integrated dishwasher and fridge freezer. Upvc double glazed window, double doors onto the garden, storage cupboard and a radiator.

## FIRST FLOOR LANDING

Loft access, radiator, upvc double glazed window and doors to -

## BEDROOM 1

Built on wardrobes, radiator and upvc double glazed window.

## EN SUITE

Enclosed shower, wash hand basin, radiator and upvc double glazed window.

## BEDROOM 2

Wardrobes, upvc double glazed window and radiator.

## BEDROOM 3

Upvc double glazed window and radiator.



## BEDROOM 4

Upvc double glazed window and radiator.

## BATHROOM

Panel enclosed bath with a shower and shower screen, low flush wc, wash hand basin, radiator and upvc double glazed window.

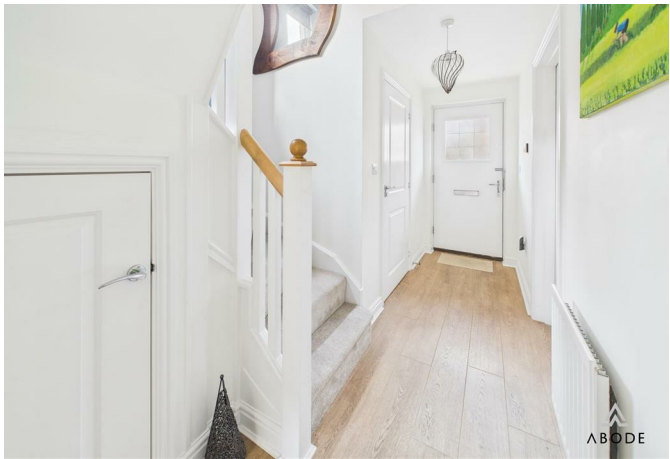
## OUTSIDE

Beautiful landscaped garden offering shaped lawns, seating areas, enclosed flooring beds, vegetable beds and outside tap.

Long side drive down to a single garage.



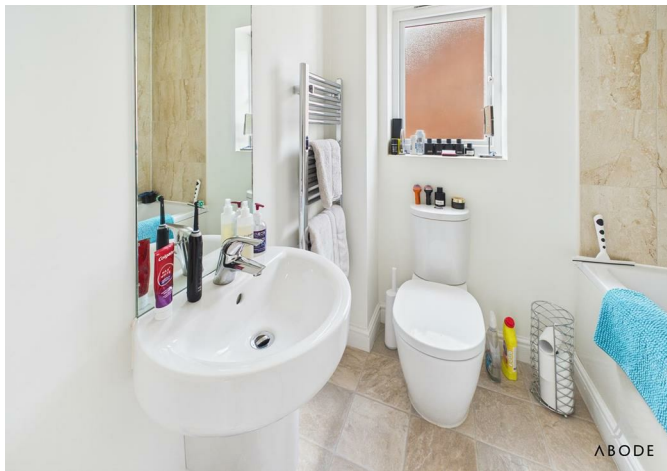








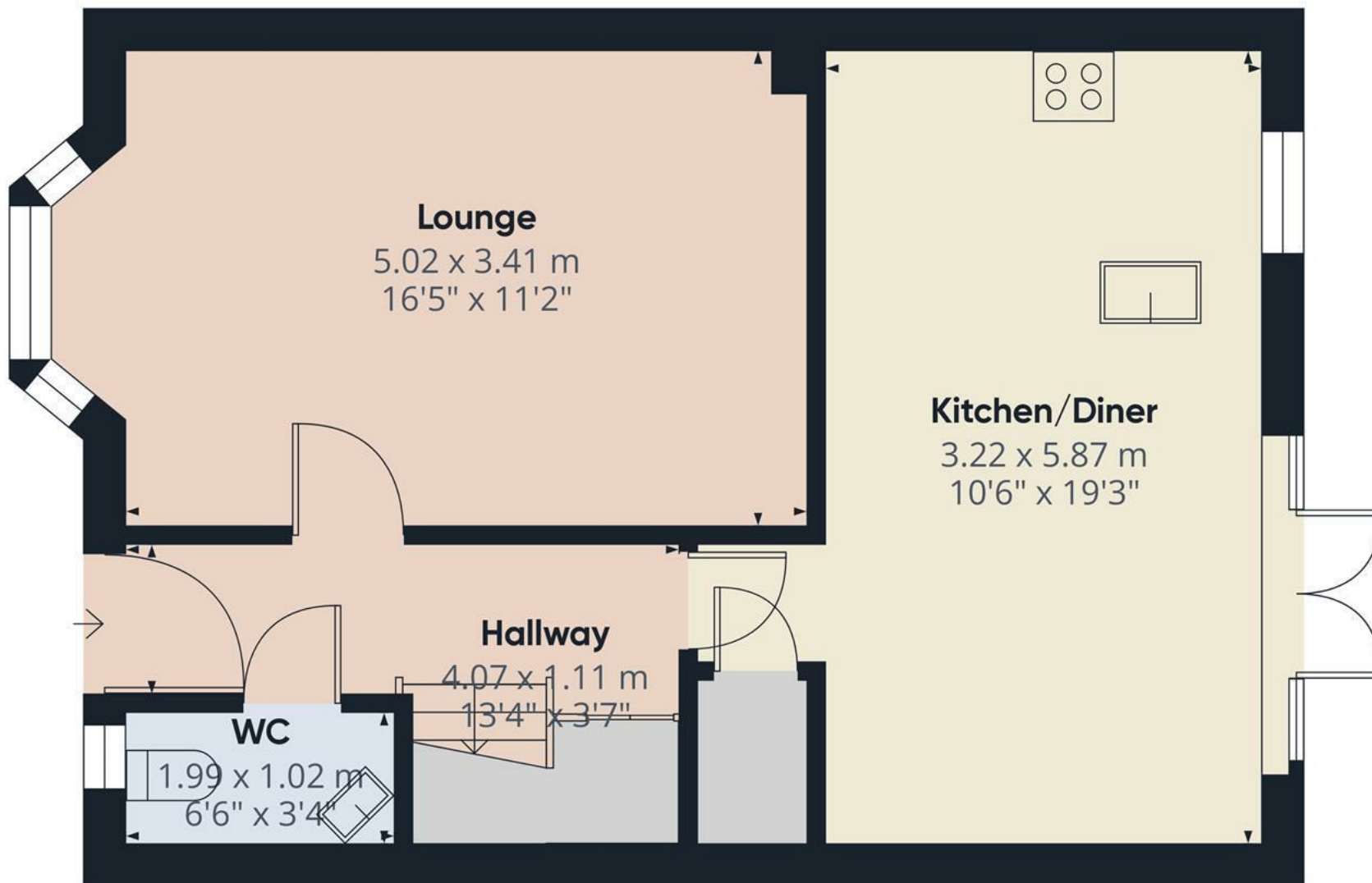












Approximate total area<sup>(1)</sup>  
48.43 m<sup>2</sup>  
521.29 ft<sup>2</sup>

(1) Excluding balconies and terraces

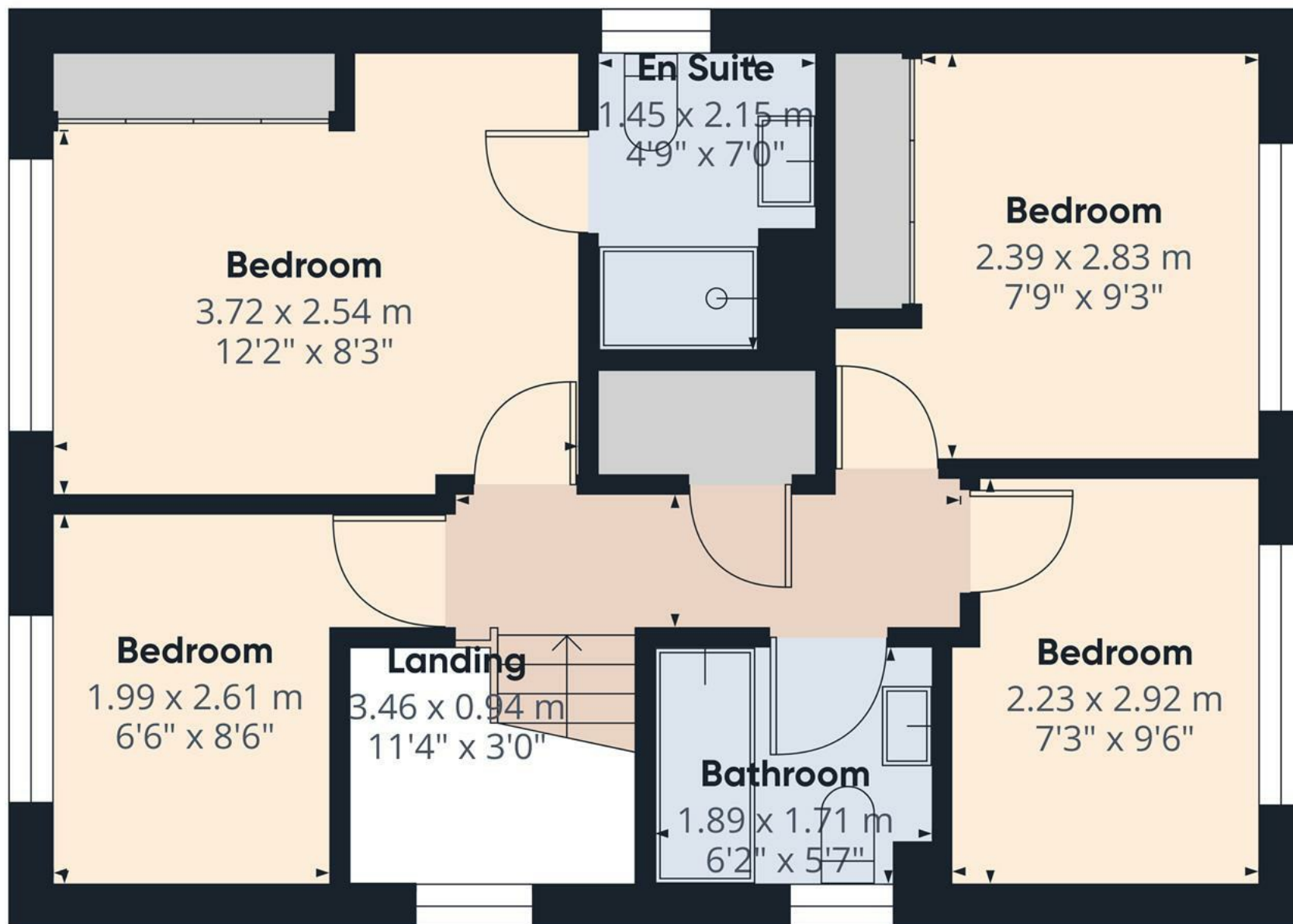
While every attempt has been made to ensure accuracy, all measurements are approximate, not to scale. This floor plan is for illustrative purposes only.

Calculations are based on RICS IPMS 3C standard.

GIRAFFE360

Floor 0





Approximate total area<sup>(1)</sup>

42.36 m<sup>2</sup>

455.95 ft<sup>2</sup>

(1) Excluding balconies and terraces

While every attempt has been made to ensure accuracy, all measurements are approximate, not to scale. This floor plan is for illustrative purposes only.

Calculations are based on RICS IPMS 3C standard.

GIRAFFE360

Floor 1



