





*** FEATURE HOMES ***

RESERVE ANY BRAMBLE BEFORE 30TH JUNE 2025 AND
RECEIVE LUXURY FLOORING, TURF & £15,000 DISCOUNT *

Nestled in the charming village of Rolleston on Dove, this exquisite 1128sqft detached dorma bungalow on Wragg Close offers a perfect blend of modern living and serene surroundings, specifically designed for the over 55s this new build by Peveril Homes boasts a thoughtful layout, featuring two well-proportioned bedrooms and third bedroom/study and two stylish bathrooms, making it an ideal choice for those seeking comfort and convenience.

Upon entering, you are welcomed by a spacious entrance hall that leads to a bright and airy lounge, perfect for relaxation. The heart of the home is undoubtedly the kitchen diner, which provides a delightful space. The ground floor also includes a convenient bathroom and a versatile bedroom.

Venturing to the first floor, you will find two bedrooms along with another well-appointed bathroom.

Outside, the property features an enclosed garden, providing a safe and tranquil area to enjoy the outdoors. Additionally, a single garage offers practical storage solutions or parking for your vehicle.

The home also has the benefit of solar panels, under floor heating and air source pump.

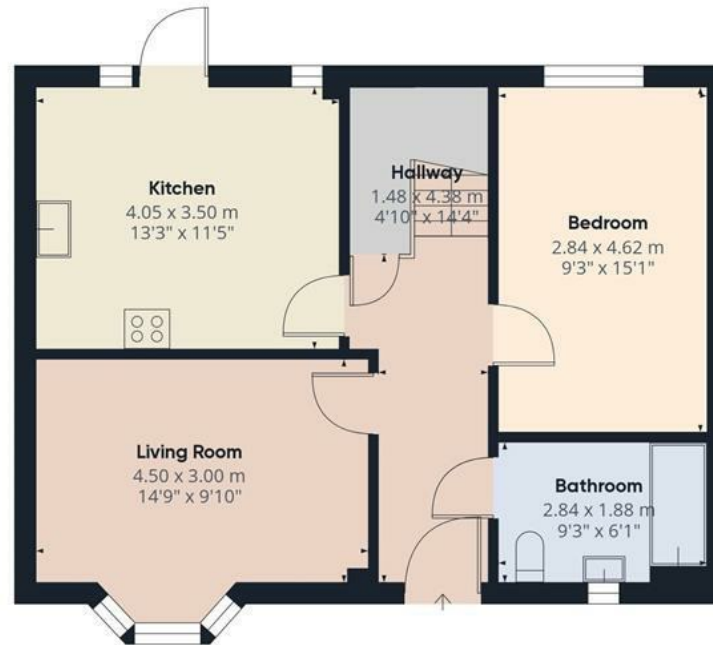
A management charge of £397.37 per annum is applicable to this development.



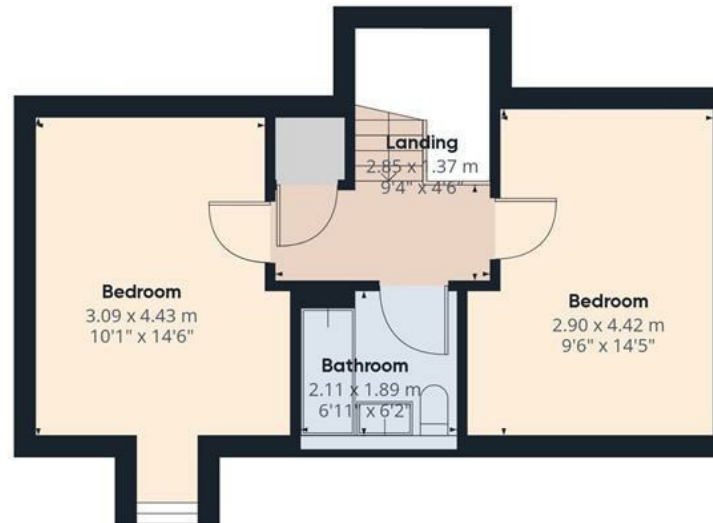
ABODE
SALES & LETTINGS



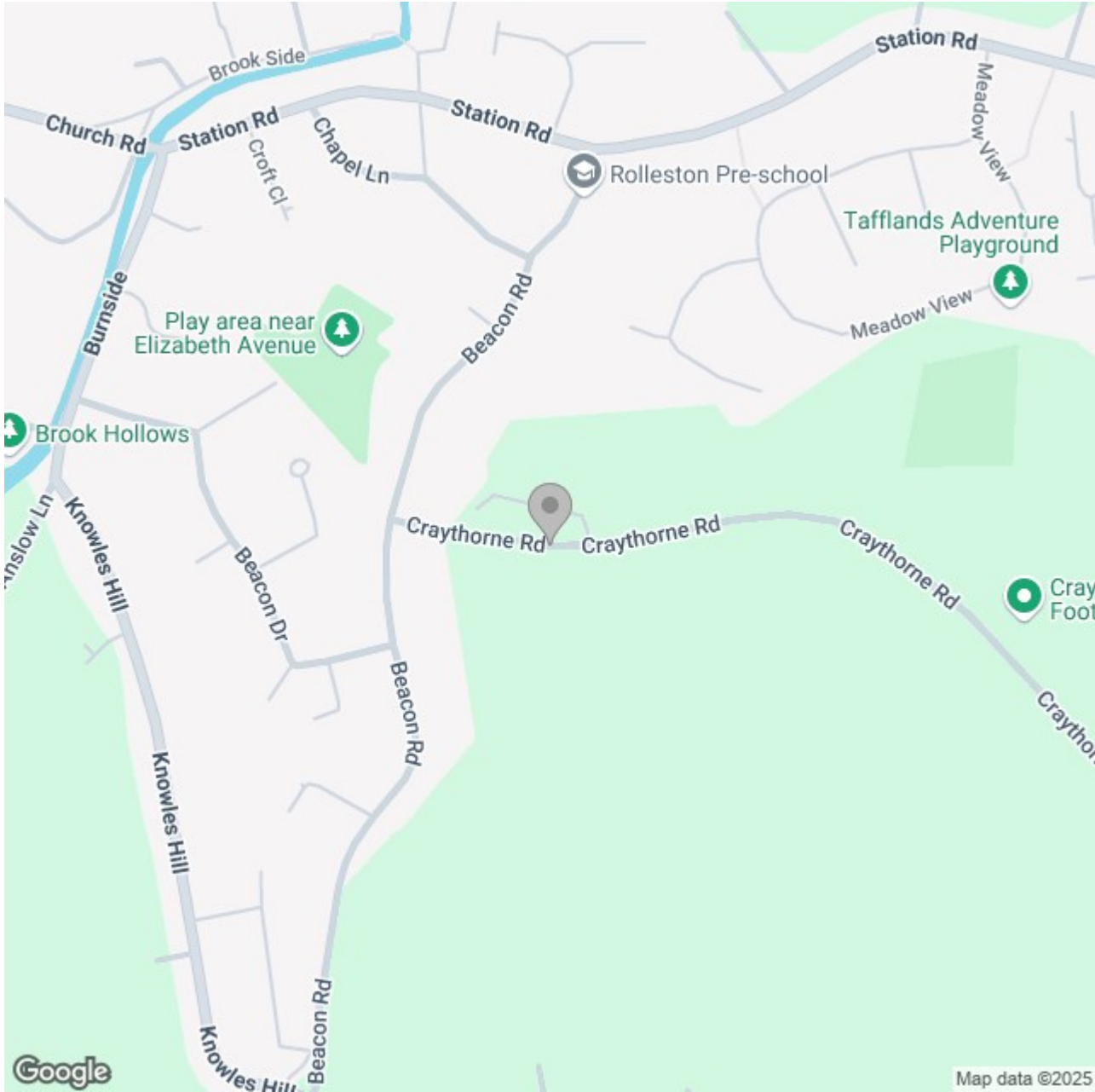




Floor 0



Floor 1



Energy Efficiency Rating

	Current	Potential
Very energy efficient - lower running costs		
(92 plus) A		
(81-91) B		
(69-80) C		
(55-68) D		
(39-54) E		
(21-38) F		
(1-20) G		
Not energy efficient - higher running costs		

England & Wales

EU Directive 2002/91/EC 