



34 Rakeway Road

Cheadle, Cheadle, ST10 1QH

Presenting this charming three-bedroom semi-detached home, situated in an elevated position and set back from the road for added privacy. This traditional property boasts generous living spaces, including a welcoming reception hall, a kitchen with integrated appliances and a spacious double-aspect lounge/dining room. Upstairs, you'll find three well-proportioned bedrooms and a shower room.

The property retains a wealth of original features, including stunning Minton flooring, timber-panelled floors, and log-burning fireplaces, which enhance its character and appeal. Additionally, there's a converted garage, currently set up as an indoor cinema, but offering versatility for a variety of uses, ideal for the discerning buyer.

Outside, the home benefits from a front garden and a driveway leading to a detached garage. The beautifully landscaped rear garden provides a perfect space for outdoor enjoyment. The property is equipped with gas central heating and uPVC double glazing throughout.

Viewing is highly recommended to fully appreciate the charm and potential of this lovely home.

Offers In Excess Of £255,000

34 Rakeway Road

Cheadle, Cheadle, ST10 1QH



Hallway

Lounge

Dining Area

Sitting Area

Kitchen

Landing

Bedroom One

Bedroom Two

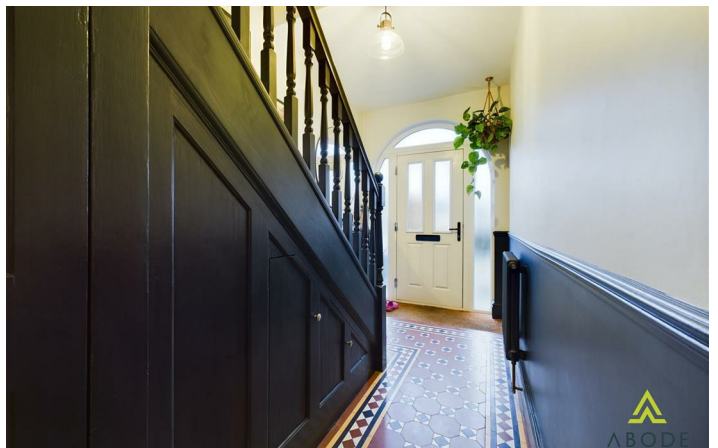
Bedroom Three

Family Bathroom

Garage



Directions



Floor Plan



These particulars, whilst believed to be accurate are set out as a general outline only for guidance and do not constitute any part of an offer or contract. Intending purchasers should not rely on them as statements of representation of fact, but must satisfy themselves by inspection or otherwise as to their accuracy. No person in this firms employment has the authority to make or give any representation or warranty in respect of the property.

