





*** FEATURE HOMES ***

RESERVE ANY BRAMBLE BEFORE 30TH JUNE 2025 AND
RECEIVE LUXURY FLOORING, TURF & £15,000 DISCOUNT *

Nestled in the charming village of Rolleston on Dove, this exquisite 1128sqft detached dorma bungalow on Wragg Close offers a perfect blend of modern living and serene surroundings, specifically designed for the over 55s this new build by Peveril Homes boasts a thoughtful layout, featuring two well-proportioned bedrooms and third bedroom/study and two stylish bathrooms, making it an ideal choice for those seeking comfort and convenience.

Upon entering, you are welcomed by a spacious entrance hall that leads to a bright and airy lounge, perfect for relaxation. The heart of the home is undoubtedly the kitchen diner, which provides a delightful space. The ground floor also includes a convenient bathroom and a versatile bedroom.

Venturing to the first floor, you will find two bedrooms along with another well-appointed bathroom.

Outside, the property features an enclosed garden, providing a safe and tranquil area to enjoy the outdoors. Additionally, a single garage offers practical storage solutions or parking for your vehicle.

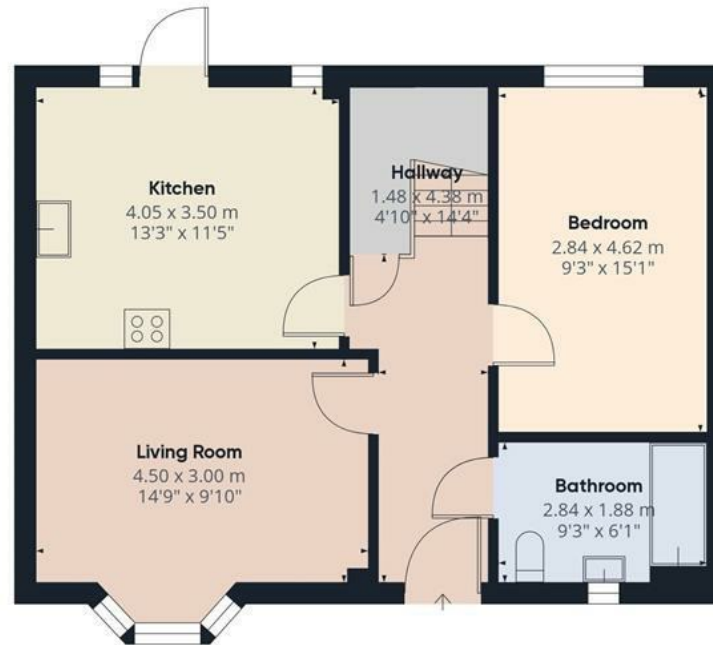
The home also has the benefit of solar panels, under floor heating and air source pump.

A management charge of £397.37 per annum is applicable to this development.

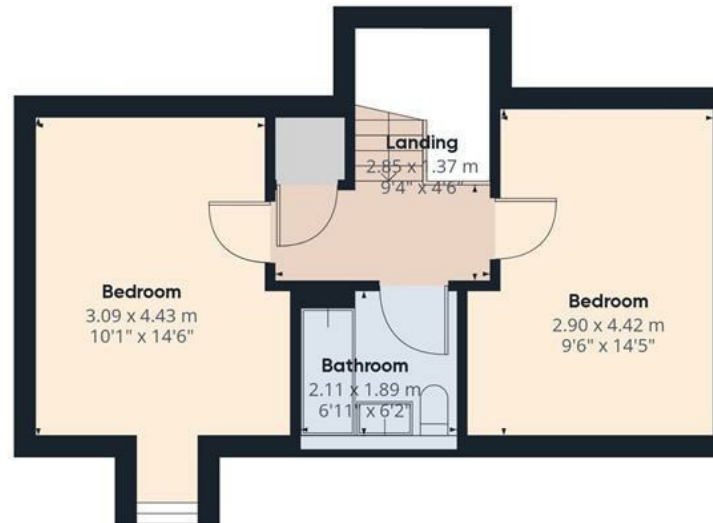




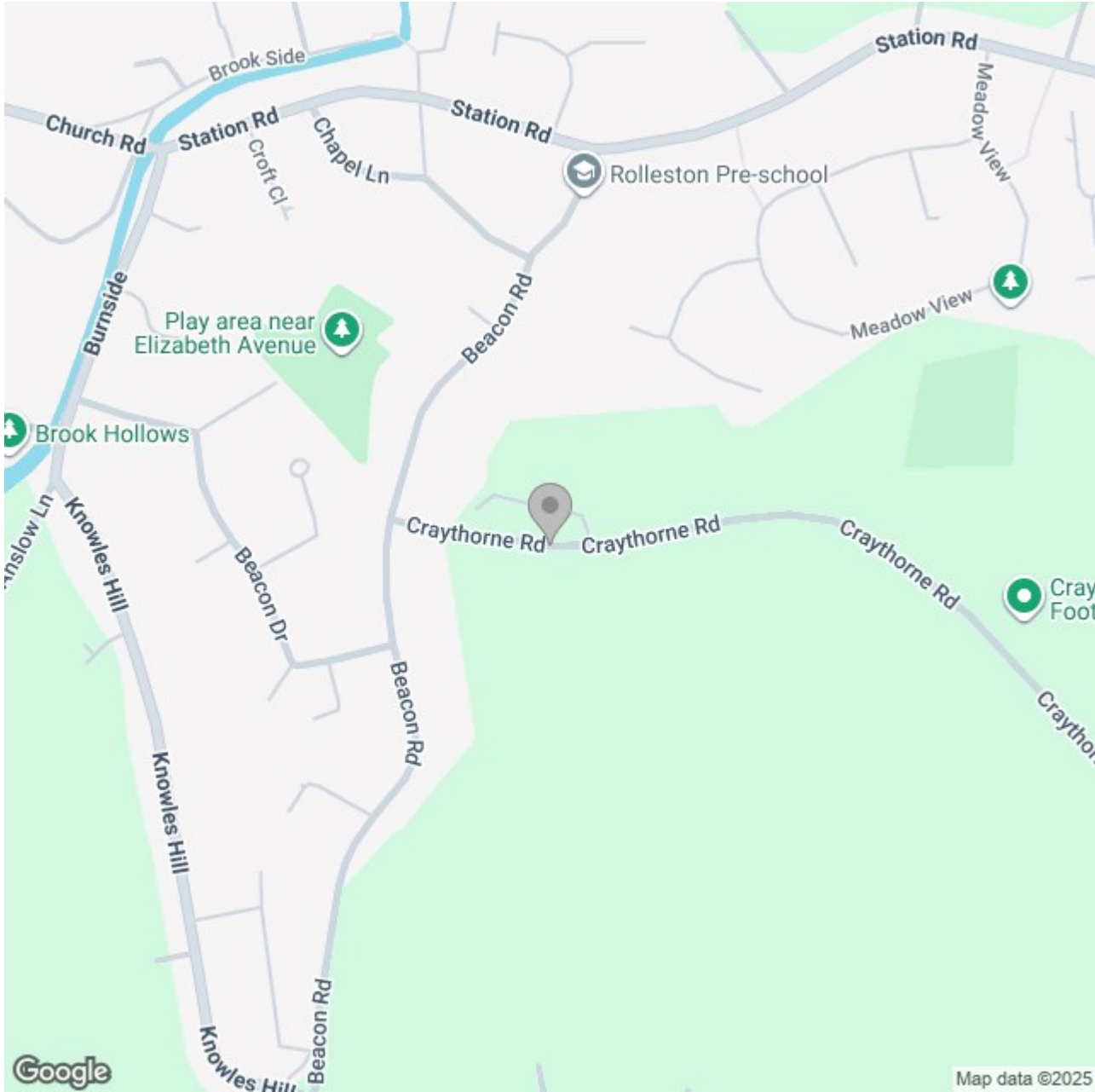




Floor 0



Floor 1



Energy Efficiency Rating

| | Current | Potential |
|---|---------|-----------|
| Very energy efficient - lower running costs | | |
| (92 plus) A | | |
| (81-91) B | | |
| (69-80) C | | |
| (55-68) D | | |
| (39-54) E | | |
| (21-38) F | | |
| (1-20) G | | |
| Not energy efficient - higher running costs | | |

England & Wales

EU Directive 2002/91/EC