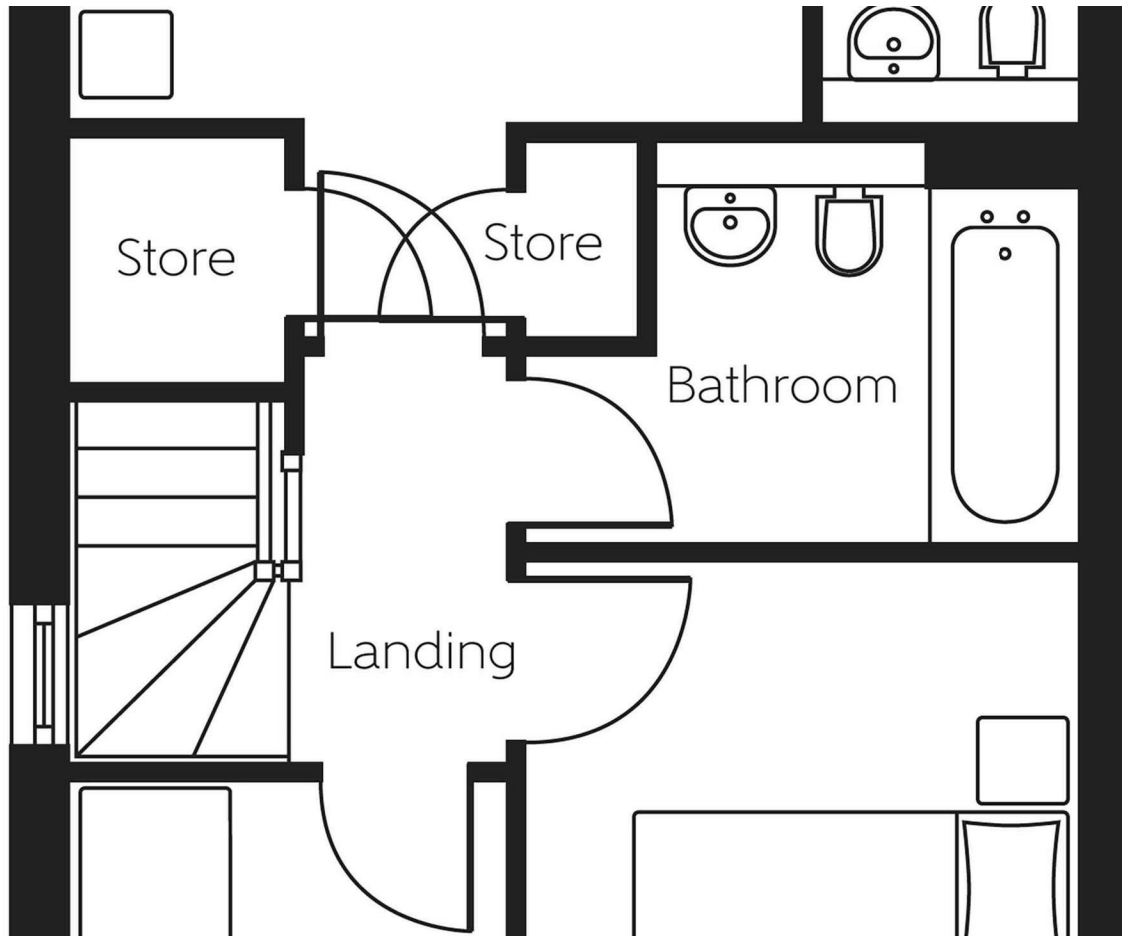






Additional window to plots 42, 44, 49, 57 & 77



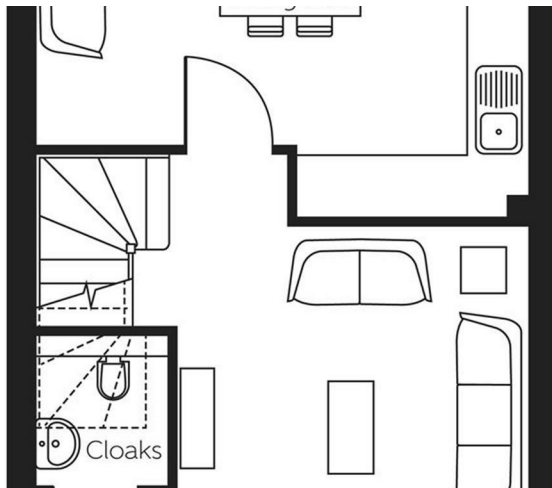
Last plot remaining \* \* \* Stunning New Build Home with Modern Features

This beautifully designed new home offers contemporary living with an open-plan kitchen and dining area, complete with a high-quality Zanussi hob, oven, and chimney hood—perfect for entertaining. A separate living room provides a cozy retreat, while a convenient cloakroom adds practicality to the ground floor.

Upstairs, the stylish modern family bathroom features elegant wall tiling, and the spacious primary bedroom benefits from a private en suite. French doors open onto the rear garden, creating a bright and airy feel, while the front garden comes fully turfed for instant curb appeal.

Built to the highest standards, this home is backed by a 10-year NHBC warranty, ensuring peace of mind.

Don't miss the opportunity to own this exceptional new home!



The Cherry is a 3-bedroom home that features an open-plan kitchen and dining area, a separate living room, and an en suite to bedroom 1.

Kitchen and dining area  
15'8" x 11'3"

Living room  
11'1 x 13'7

Bedroom 1  
11'5" x 8'2"

Bedroom 2  
8'7 x 10'1

Bedroom 3  
6'9 x 6'9









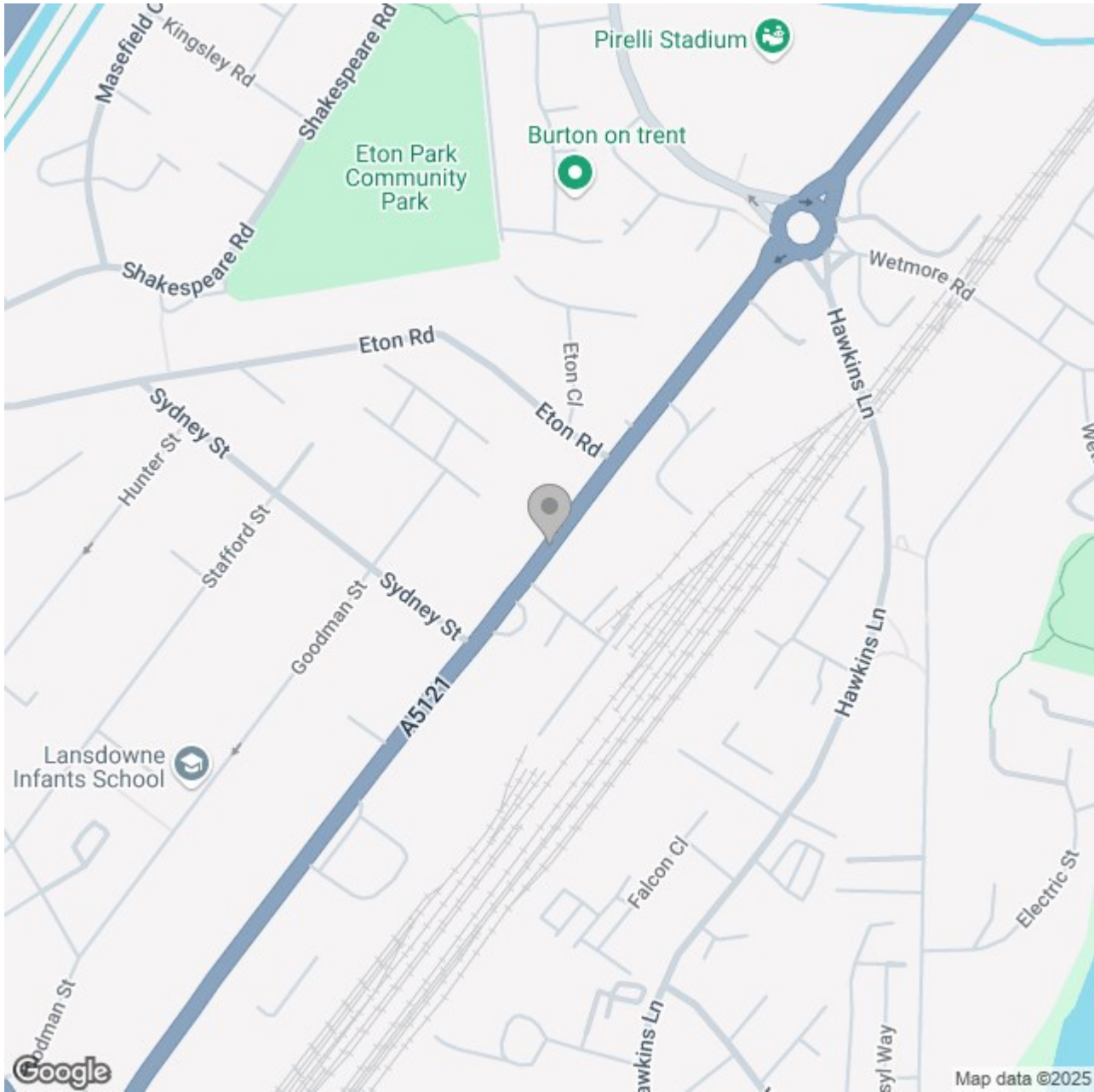












### Energy Efficiency Rating

	Current	Potential
Very energy efficient - lower running costs		
(92 plus) <b>A</b>		
(81-91) <b>B</b>		
(69-80) <b>C</b>		
(55-68) <b>D</b>		
(39-54) <b>E</b>		
(21-38) <b>F</b>		
(1-20) <b>G</b>		
Not energy efficient - higher running costs		

England & Wales

EU Directive 2002/91/EC