

15 Turnpike Way, Ashbourne, DE6 1UD

£1,200 PCM

 **ABODE**
SALES & LETTINGS





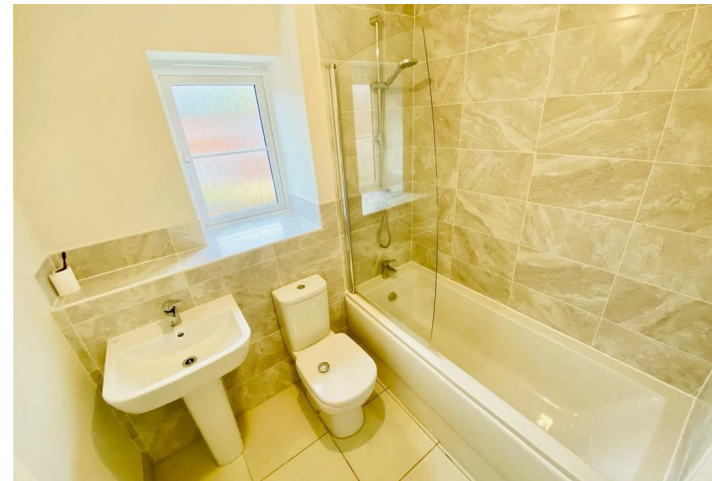
ABODE Lettings are thrilled to present this recently constructed property by Cameron Homes on the sought-after Sycamore Park development in Ashbourne, Derbyshire. This three bedroom semi-detached house is available for the first time to the rental market.

This immaculate property boasts a welcoming hall, convenient guest cloakroom, inviting lounge, and a beautifully fitted dining kitchen.

On the first floor, you'll find three spacious bedrooms, including a luxurious master bedroom with its own en suite, along with a modern family bathroom.

Outside, there's a lovely rear garden perfect for relaxing or entertaining, as well as a convenient driveway for off-road parking.

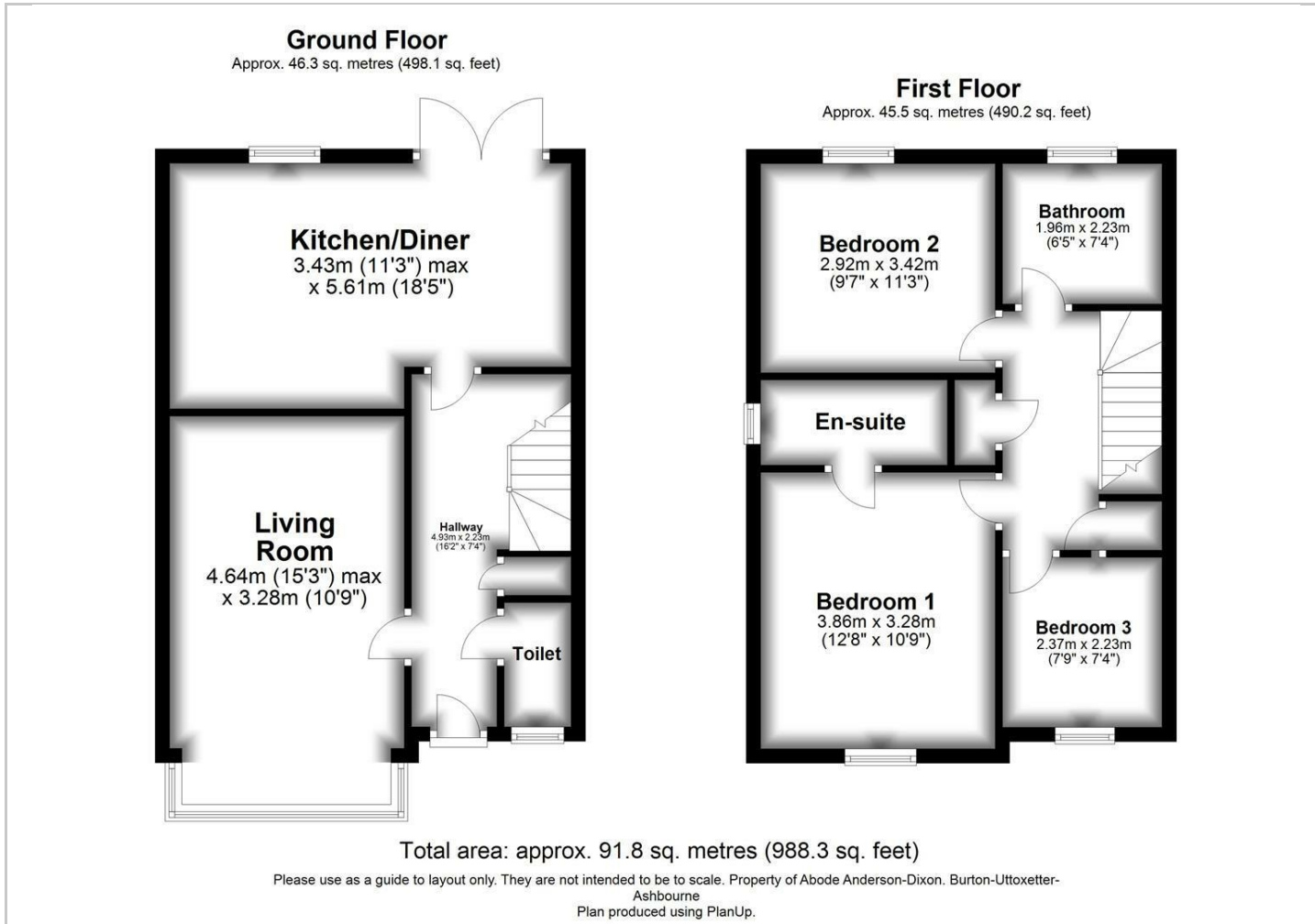
Call ABODE Lettings to arrange your appointment.



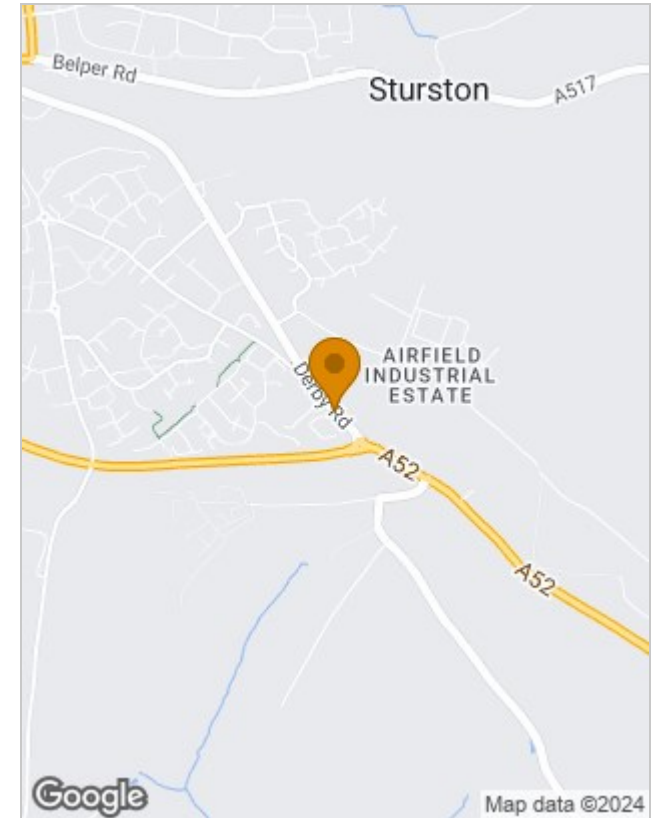




Floor Plans



Location Map



Energy Performance Graph

Energy Efficiency Rating		Current	Potential
Very energy efficient - lower running costs			
(92 plus) A			95
(81-91) B		84	
(69-80) C			
(55-68) D			
(39-54) E			
(21-38) F			
(1-20) G			
Not energy efficient - higher running costs			
England & Wales		EU Directive 2002/91/EC	

Please contact our Burton Lettings Office on 01283 845888 if you wish to arrange a viewing appointment for this property or require further information.

The particulars are set out as a general outline only for the guidance of intended purchasers or lessees, and do not constitute, any part of a contract. Nothing in these particulars shall be deemed to be a statement that the property is in good structural condition or otherwise nor that any of the services, appliances, equipment or facilities are in good working order. Purchasers should satisfy themselves of this prior to purchasing.