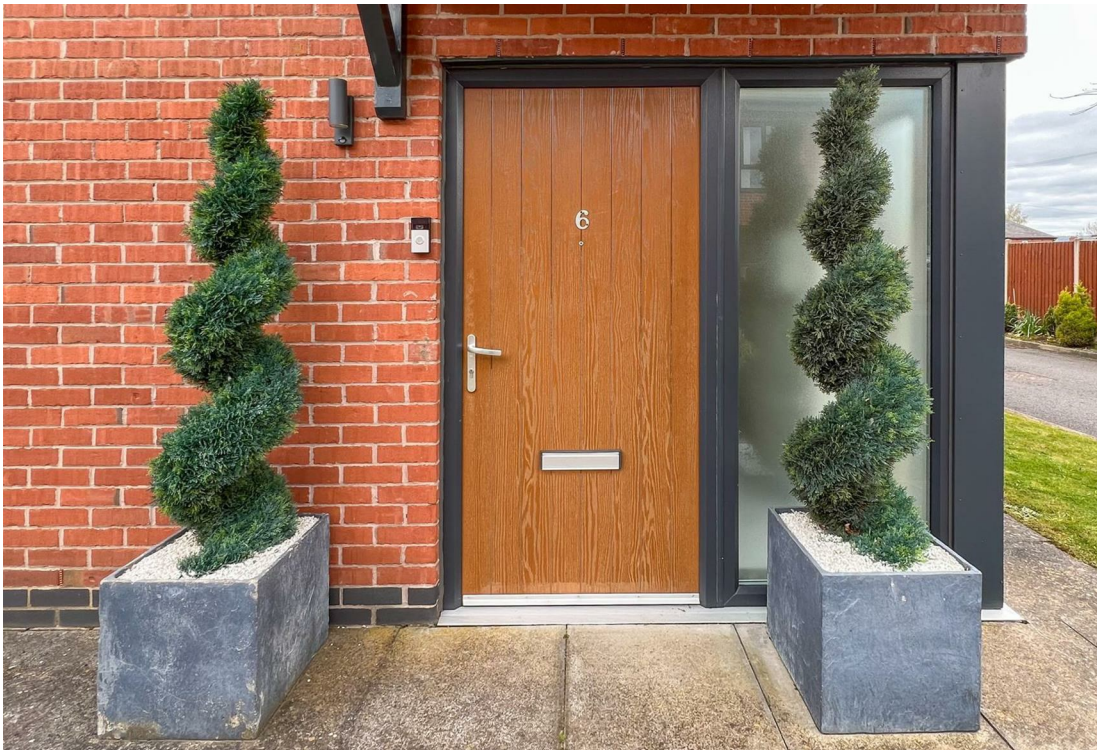


6 Sandpiper Close, Stoke-On-Trent, ST10 1LN

£850 PCM





ABODE Lettings are pleased to offer this modern two bedroom semi-detached house situated in Cheadle which has great local road links.

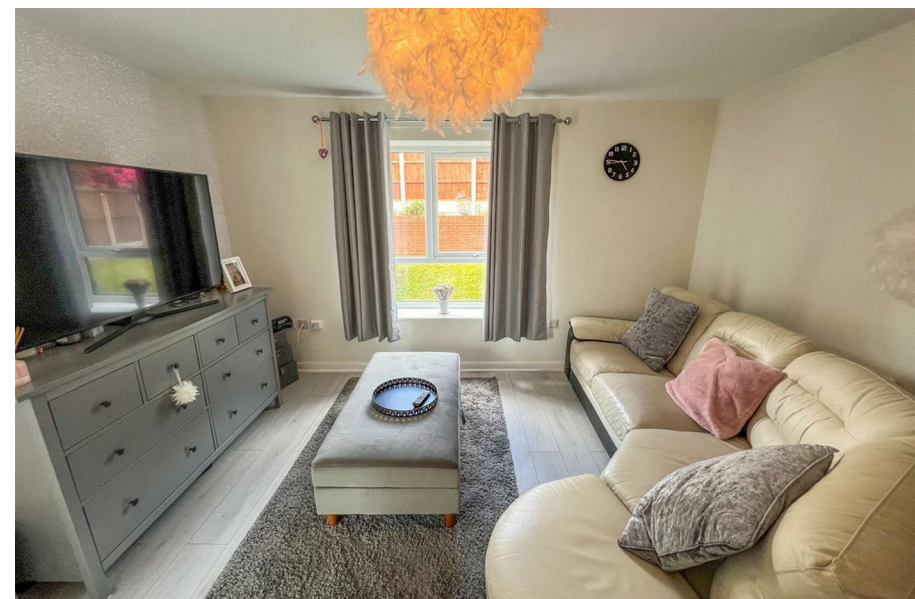
This is a rare opportunity to secure an immaculate home in a much sought after location which offers superb local amenities including schooling and leisure activities.

In brief, the accommodation provides - Fully fitted kitchen with a great selection of wall and base units. Large living area and a downstairs cloakroom/utility.

The first floor provides two double bedrooms. These rooms are serviced by the main family bathroom.

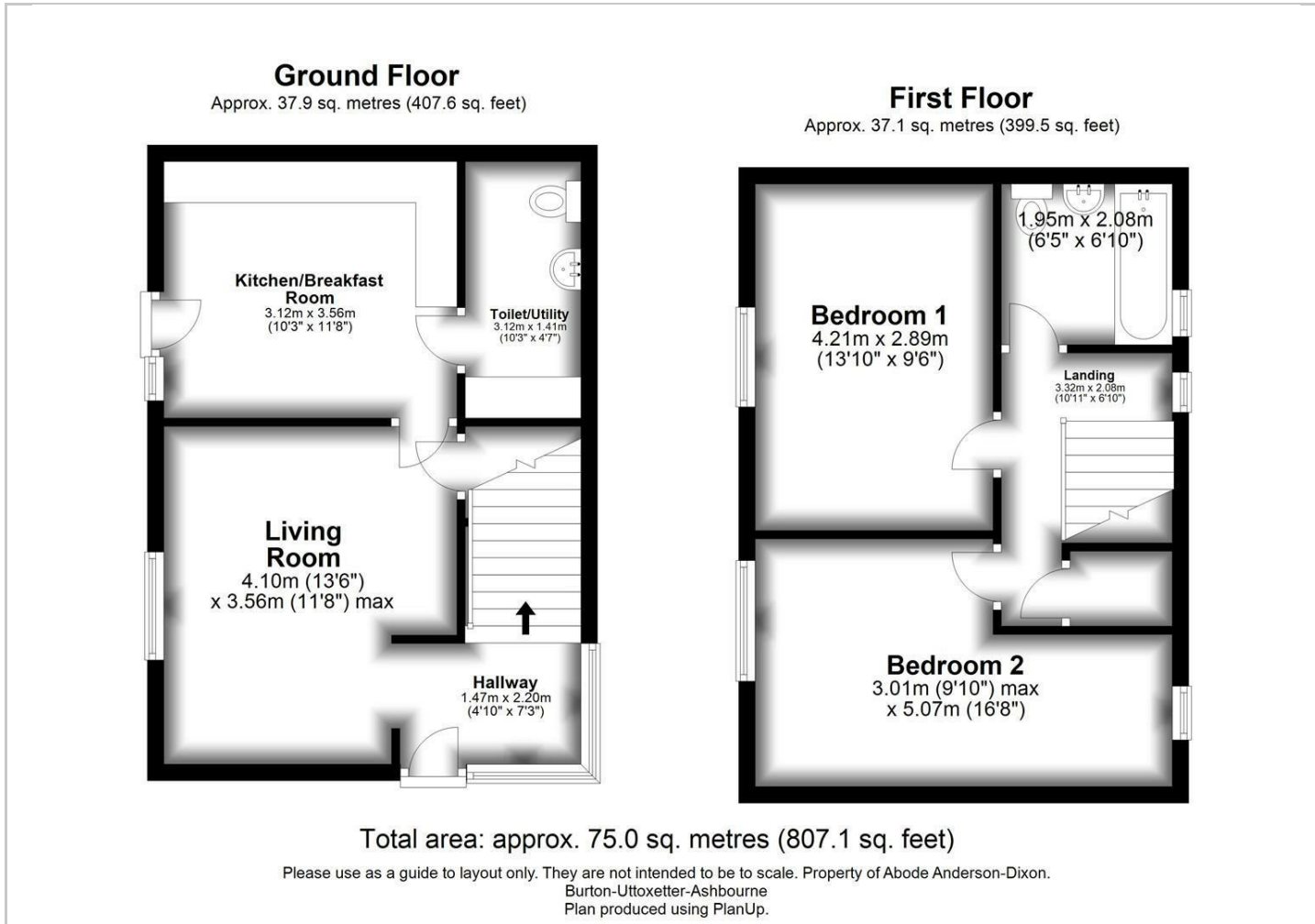
To the frontage there is off road parking for two vehicles.



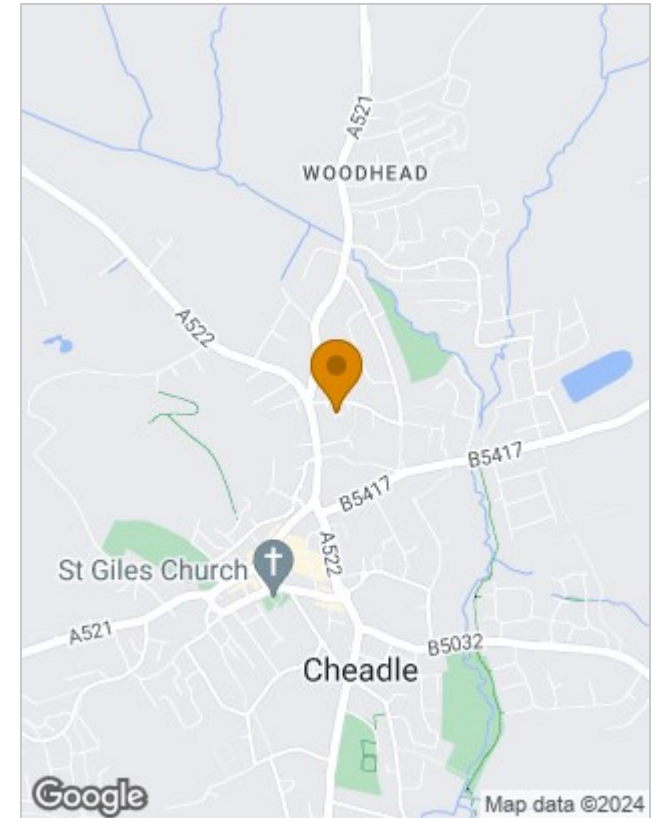




Floor Plans



Location Map



Energy Performance Graph

Energy Efficiency Rating		Current	Potential
Very energy efficient - lower running costs			
(92 plus) A			95
(81-91) B		82	
(69-80) C			
(55-68) D			
(39-54) E			
(21-38) F			
(1-20) G			
Not energy efficient - higher running costs			
England & Wales		EU Directive 2002/91/EC	

Please contact our Burton Lettings Office on 01283 845888 if you wish to arrange a viewing appointment for this property or require further information.

The particulars are set out as a general outline only for the guidance of intended purchasers or lessees, and do not constitute, any part of a contract. Nothing in these particulars shall be deemed to be a statement that the property is in good structural condition or otherwise nor that any of the services, appliances, equipment or facilities are in good working order. Purchasers should satisfy themselves of this prior to purchasing.