



Cathedral Court, Heath Road

Off Heath Road, Uttoxeter, ST14 7LX

**** NEW BUILD DEVELOPMENT ** BESPOKE THREE BEDROOM SEMI-DETACHED HOMES ****

A small development of three and four bedroom homes, centrally located, built by family business JK homes.

Asking Price £279,999

Cathedral Court, Heath Road

Off Heath Road, Uttoxeter, ST14 7LX



- Family Business
- 930sq foot of accomodation
- Private Gardens
- READY TO MOVE IN
- 10 NHBC guarantee
- Two bathrooms (en-suite)
- Two Parking Spaces
- Centrally Located
- Bifold doors from dining kitchen
- EPC B (Highly efficient)

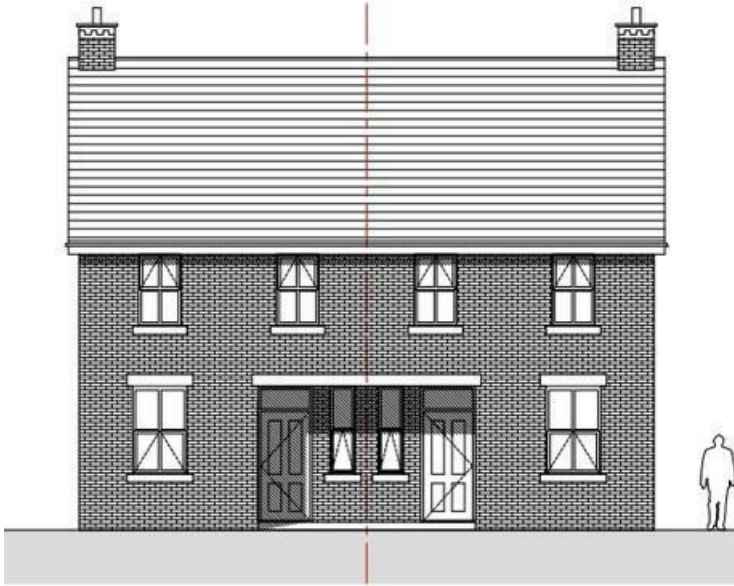
Description



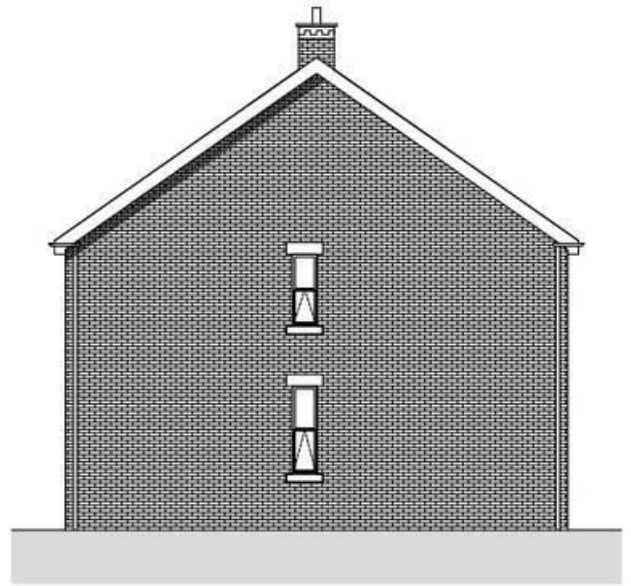
Directions



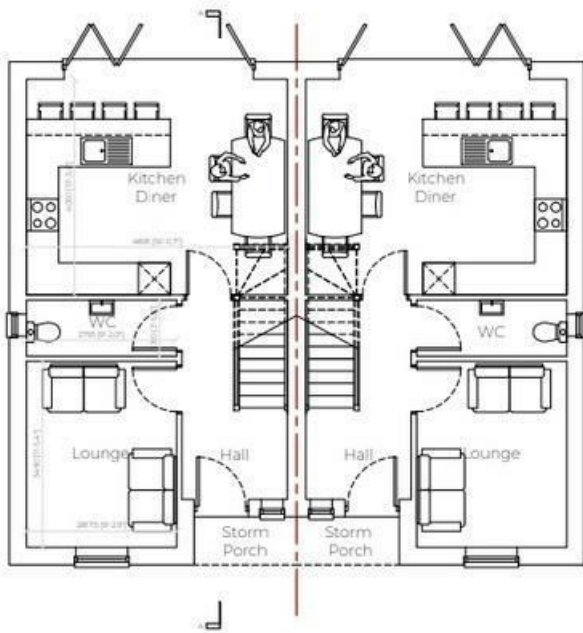
Floor Plan



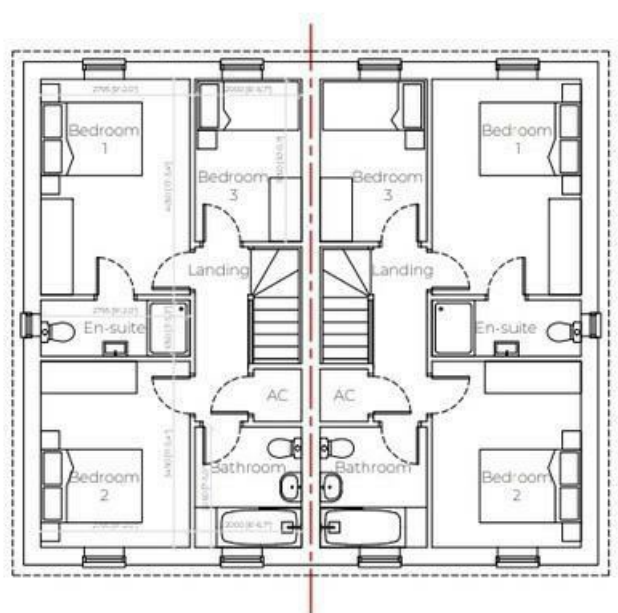
House Type 2 North West Elevation



House Type 2 South West Elevation (Obscured Glass)



House Type 2 Ground Floor Plan



House Type 2 First Floor Plan

These particulars, whilst believed to be accurate are set out as a general outline only for guidance and do not constitute any part of an offer or contract. Intending purchasers should not rely on them as statements of representation of fact, but must satisfy themselves by inspection or otherwise as to their accuracy. No person in this firm's employment has the authority to make or give any representation or warranty in respect of the property.

Energy Efficiency Rating		Current	Potential
Very energy efficient - lower running costs			
(92 plus)	A		
(81-91)	B		
(69-80)	C		
(55-68)	D		
(39-54)	E		
(21-38)	F		
(1-20)	G		
Not energy efficient - higher running costs			
England & Wales		EU Directive 2002/91/EC	