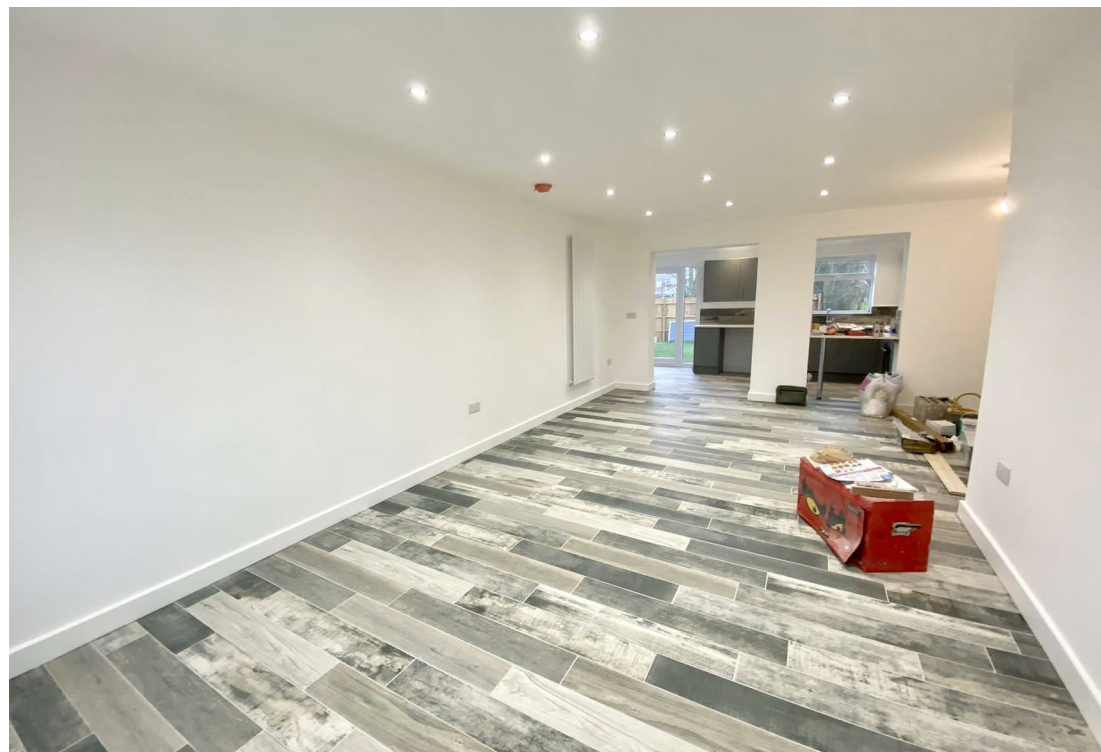


27 Glamis Close, Burton-on-Trent, DE13 0HX

£1,050 PCM





ABODE are excited to offer for rental this extended three bedroom semi-detached home which has the benefit of a full renovation, this property is situated at Stretton on the edge of Burton upon Trent.

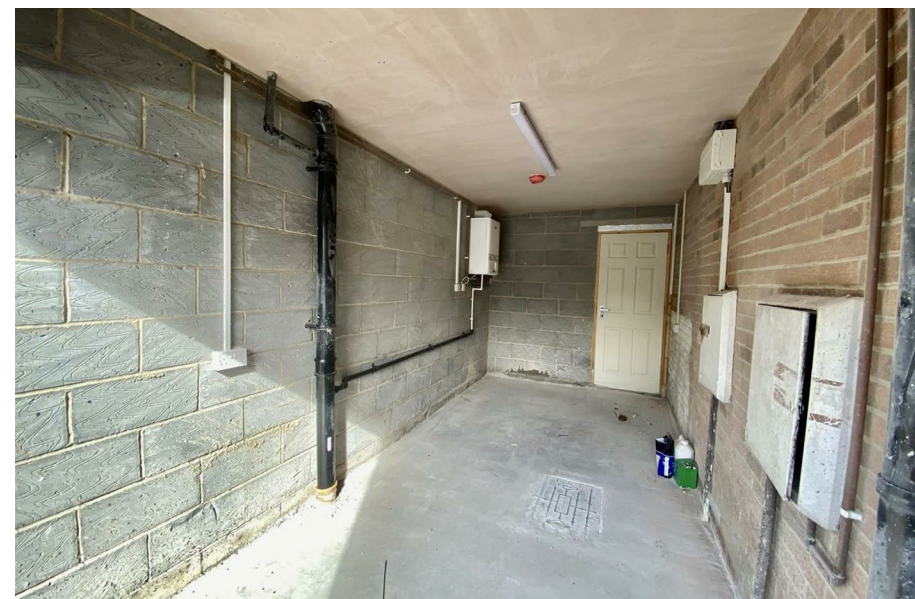
Spacious throughout, this is a rare opportunity to secure such an immaculately presented house in a much sought after location which offers superb local amenities including schooling, leisure activities and road links.

In brief, the accommodation provides - Large kitchen/breakfast room with a great selection of wall, base units and patio doors leading to the rear, an open plan living area with ceramic tiles and a shower room off the Kitchen.

The first floor provides three good sized bedrooms one of which has an additional bathroom. There is also a family bathroom to the first floor.

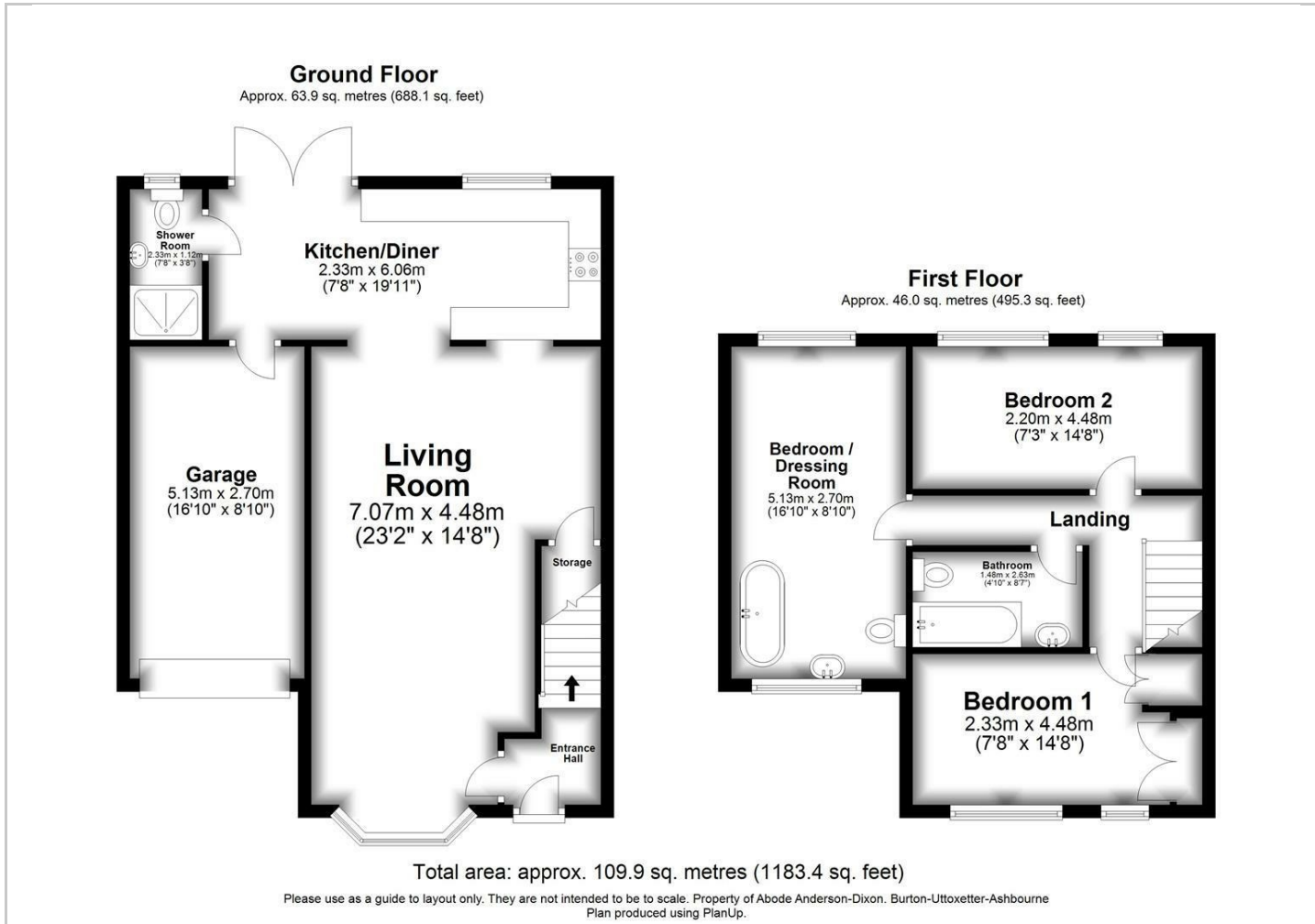
Off road parking for 2 vehicles to the frontage along with the single sized garage.



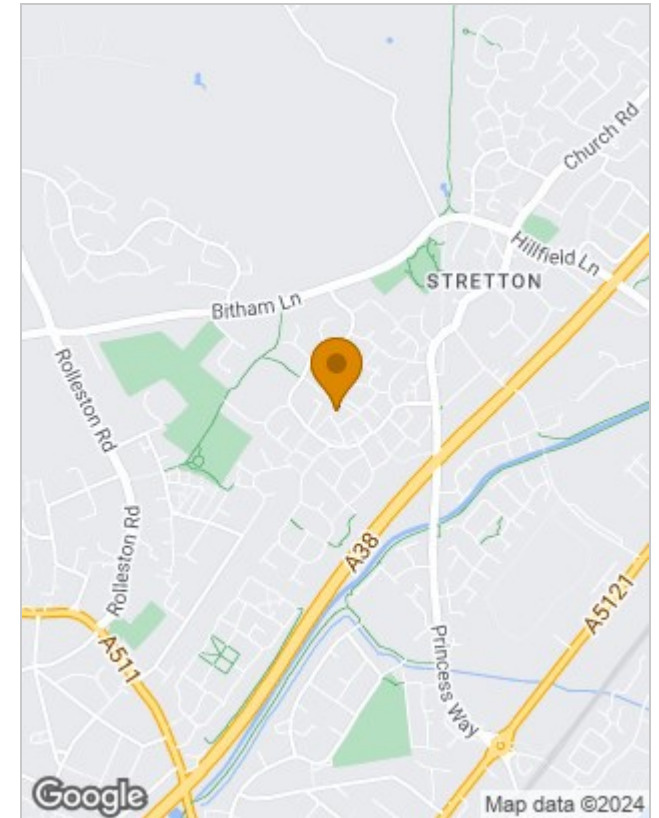




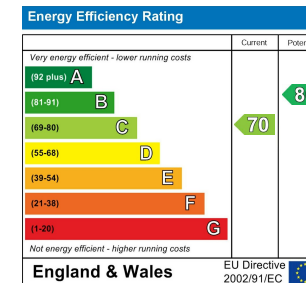
## Floor Plans



## Location Map



## Energy Performance Graph



Please contact our Burton Lettings Office on 01283 845888 if you wish to arrange a viewing appointment for this property or require further information.

The particulars are set out as a general outline only for the guidance of intended purchasers or lessees, and do not constitute, any part of a contract. Nothing in these particulars shall be deemed to be a statement that the property is in good structural condition or otherwise nor that any of the services, appliances, equipment or facilities are in good working order. Purchasers should satisfy themselves of this prior to purchasing.