



The Turner Oakamoor Road Cheadle, Cheadle, ST10 1BS

**** AVAILBLE IMMEDIATLEY **** STUNNING, HIGH SPECIFIACION THREE BEDROOM PROPERTY WITH FITTED FLOORING AND LAWN **** The Turner is part of the Artisan collection, this three-bedroom semi-detached property benefits from a 10 year NHBC guarantee and offers an entrance hall, guest cloak room with wash basin and wc, fitted kitchen with fitted oven and hob and a fridge freezer. Good size lounge/diner with double doors onto the garden and a storage cupboard. Three first floor bedrooms, master with an en suite shower room and a fitted bathroom. Double parking at the front and an enclosed rear garden. **** CALL ABODE TO BOOK YOUR VIEWING 01538 750081 ****

£224,500

The Turner Oakamoor Road

Cheadle, Cheadle, ST10 1BS



- SEMI DETACHED
- LOUNGE DINER
- EN SUITE & BATHROOM
- HALL
- KITCHEN
- GARAGE
- CLOAKROOM
- THREE BEDROOMS
- GARDEN

HALL

CLOAKROOM

LOUNGE/DINER

18'9 x 15'4 (5.72m x 4.67m)

KITCHEN

10'5 x 8'3 (3.18m x 2.51m)

FIRST FLOOR LANDING

BEDROOM 1

13'8 x 11'4 (4.17m x 3.45m)

EN SUITE

BEDROOM 2

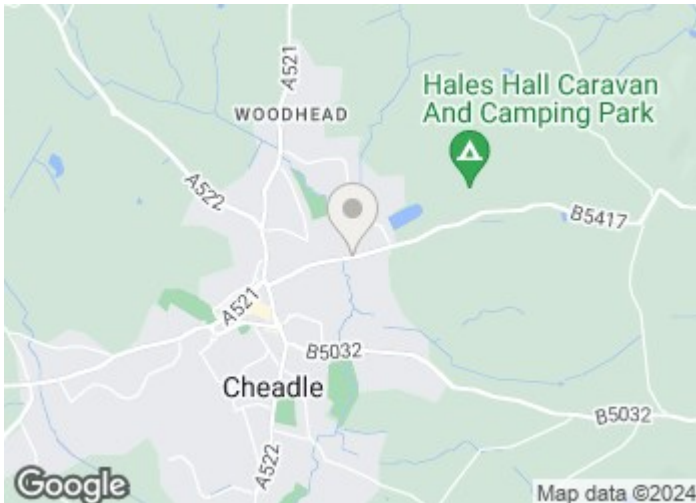
11'5 x 7'1 (3.48m x 2.16m)

BEDROOM 3

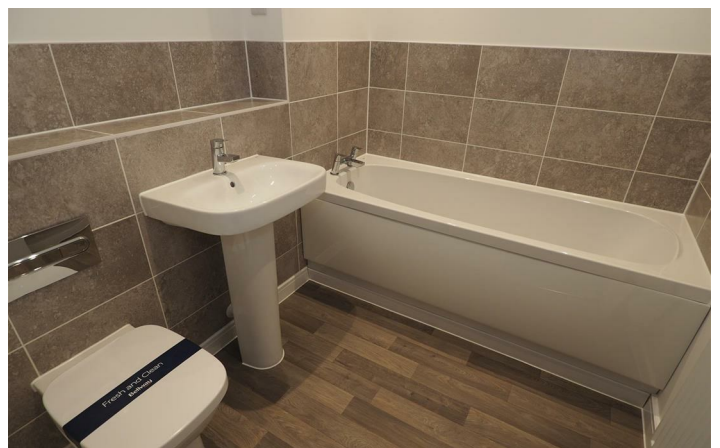
11'6 x 7'11 (3.51m x 2.41m)

BATHROOM

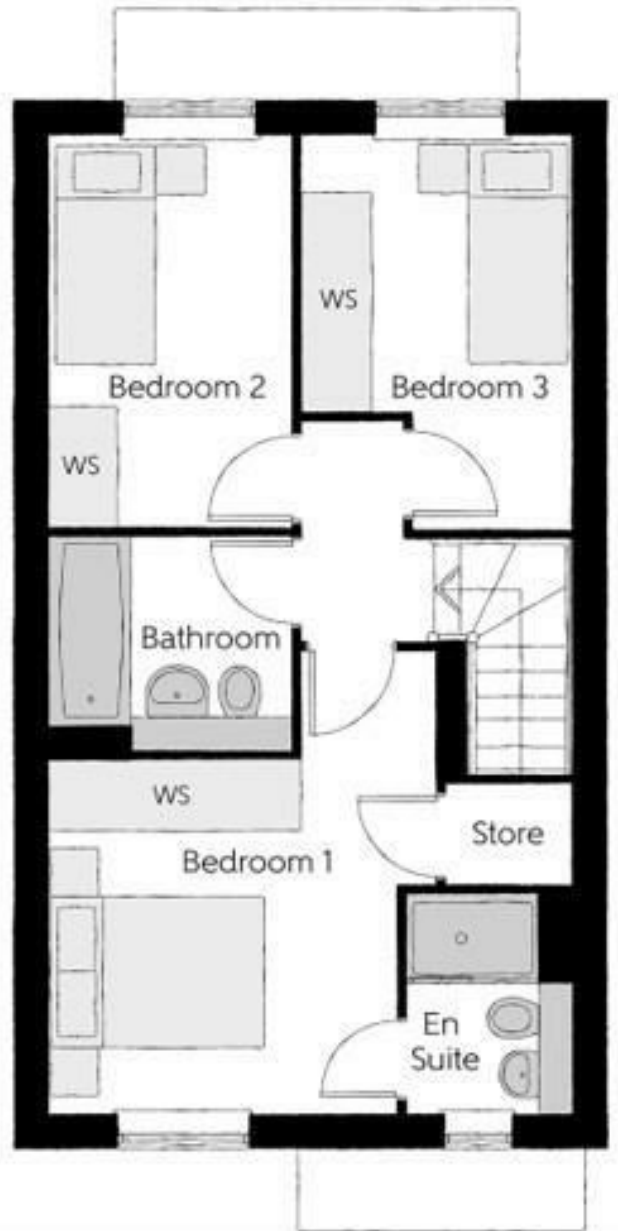
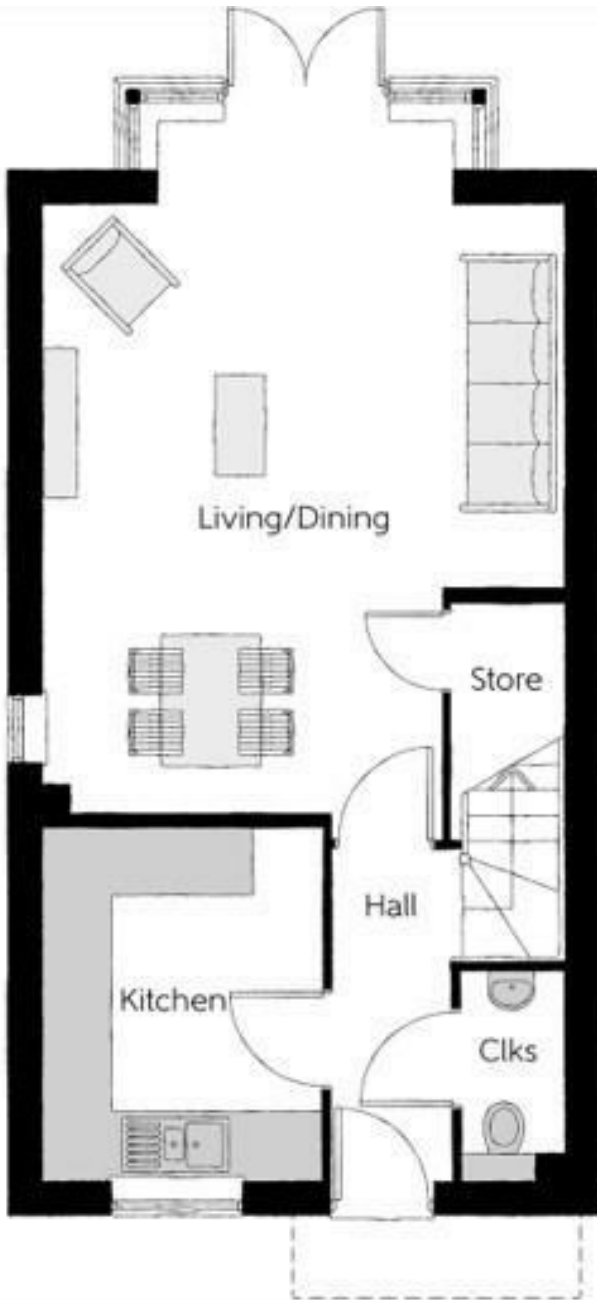
GARAGE



Directions



Floor Plan



Ability: Investigate

These particulars, whilst believed to be accurate are set out as a general outline only for guidance and do not constitute any part of an offer or contract. Intending purchasers should not rely on them as statements of representation of fact, but must satisfy themselves by inspection or otherwise as to their accuracy. No person in this firm's employment has the authority to make or give any representation or warranty in respect of the property.