





**** CHARACTER BARN CONVERSION ** DOUBLE GARAGE ** VERSATILE ACCOMMODATION ** 0.35 ACRE ****

Abode Estate Agents take great pleasure in presenting this captivating and incredibly spacious barn conversion boasting four bedrooms, set over two floors. This unique property is perfectly suited for established families, or those seeking extended family living, with two ground floor bedrooms with en-suite facilities. Situated within a small, exclusive development, the charm of this residence is enhanced by its convenient proximity to the A50 corridor, yet benefits from all of the rural aspects Somersal Herbert has to offer.

Nestled within the cherished rural hamlet of Somersal Herbert, the property is graced with a delightful private garden, further enhancing its allure. A double garage and garden room offers great potential for AirBnB/holiday let potential to the discerning buyers.

Viewing arrangements are strictly by appointment only and can be made by contacting Abode Estate Agents.



Ground Floor

Situated at the forefront of the property, you'll find an exceptionally appealing paved patio area, perfect for outdoor gatherings. The entrance is graced by a glazed door leading into the well-lit reception hall, featuring a beautiful oak staircase. Situated north of the hall is the second ground floor bedroom, which is double sized and a velux window offers ample natural light. Internal entry leads to a utility space with laminate flooring, accompanied by wall and base units adorned with roll edge work surfaces. A stainless steel sink and designated areas for appliances, including plumbing for a numerous white goods, complete this functional area.

A remarkable highlight of this charming barn is the expansive living room, exuding character and ideal for family activities. Exposed roof trusses, an oak floor, and a brick wall contribute to its unique ambiance. At one end of the room, a substantial brick fireplace with a log burning fireplace takes center stage, while windows offer views of the garden. This versatile space serves both dining and sitting purposes.

Adjacent to the hall, a family room awaits, complete with French doors opening directly onto the sunny patio. The focal point log burner on a tiled hearth adds warmth and charm to the room. A cozy study nook complements this area, along with an entryway leading to the characterful kitchen. The kitchen boasts a vaulted ceiling with a high-level window, a tiled floor, and a range of base and wall units topped with granite worktops. A Belfast style sink with a mixer tap, a granite breakfast bar, a Rangemaster electric range cooker with an extractor hood, and plumbing for a dishwasher all contribute to the kitchen's functionality. A walk-in pantry provides additional convenience.

Leading off from the family room, the ground floor master bedroom suite features an exquisite bedroom with French doors that open to the garden patio, accompanied by a modern three piece en-suite shower room.







First Floor

Upstairs, the exposed roof trusses continue to be a prominent feature. The landing boasts an oak balustrade and a Velux roof light overhead, leading to two further double sized bedrooms with Jack and Jill en-suite and a large study room. There is also a stylish Family Bathroom which presents a roll-top bathtub with a mixer tap, a WC, and a pedestal washbasin, complemented by tiled surroundings.

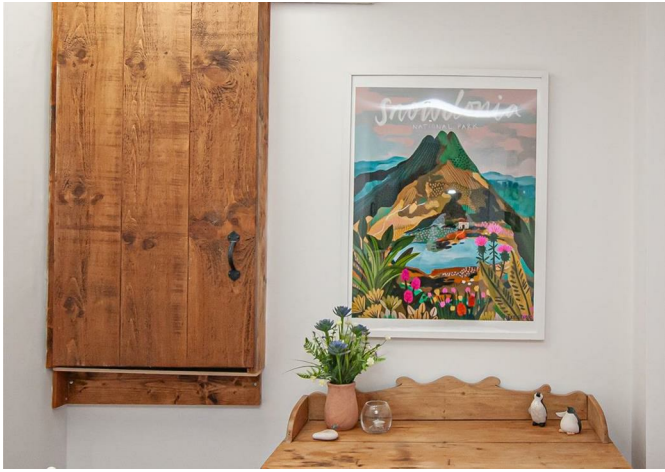
Bedroom Two comes with a built-in wardrobe and captivating exposed roof timbers. The elegant Jack and Jill en suite bathroom can service both bedrooms if required, showcasing a freestanding roll top bath with claw feet, a mixer tap, and a shower attachment. The fourth Bedroom features large roof trusses and built-in storage. The highlight feature of this bedroom, is the large adjoining study area, which could quite easily also be utilised as a cot room or further bedroom if necessary to the discerning buyer.

Outside

The rural property is accessed off Bowling Alley Lane, onto a gravel driveway leading up to a detached double garage, equipped with an electric up-and-over door. The garage also features stairs leading to a loft room, offering potential for various uses and equipped with power and lighting. Subject to necessary planning conditions this would make for a fantastic Airbnb or holiday let. Adjacent to the garage is a practical wood store.

The gravel driveway extends through double gates to additional parking spaces, surrounded by a mature landscaped garden. An attractive paved patio area with sleeper planters stands at the forefront, serving as an excellent space for family gatherings. The expansive garden includes lush lawns, well-kept hedges, and a variety of ornamental trees. A log cabin with power, light, and laminate flooring, along with a veranda, presents itself as a versatile space, suitable for a garden office or an entertainment room and even further holiday let potential.





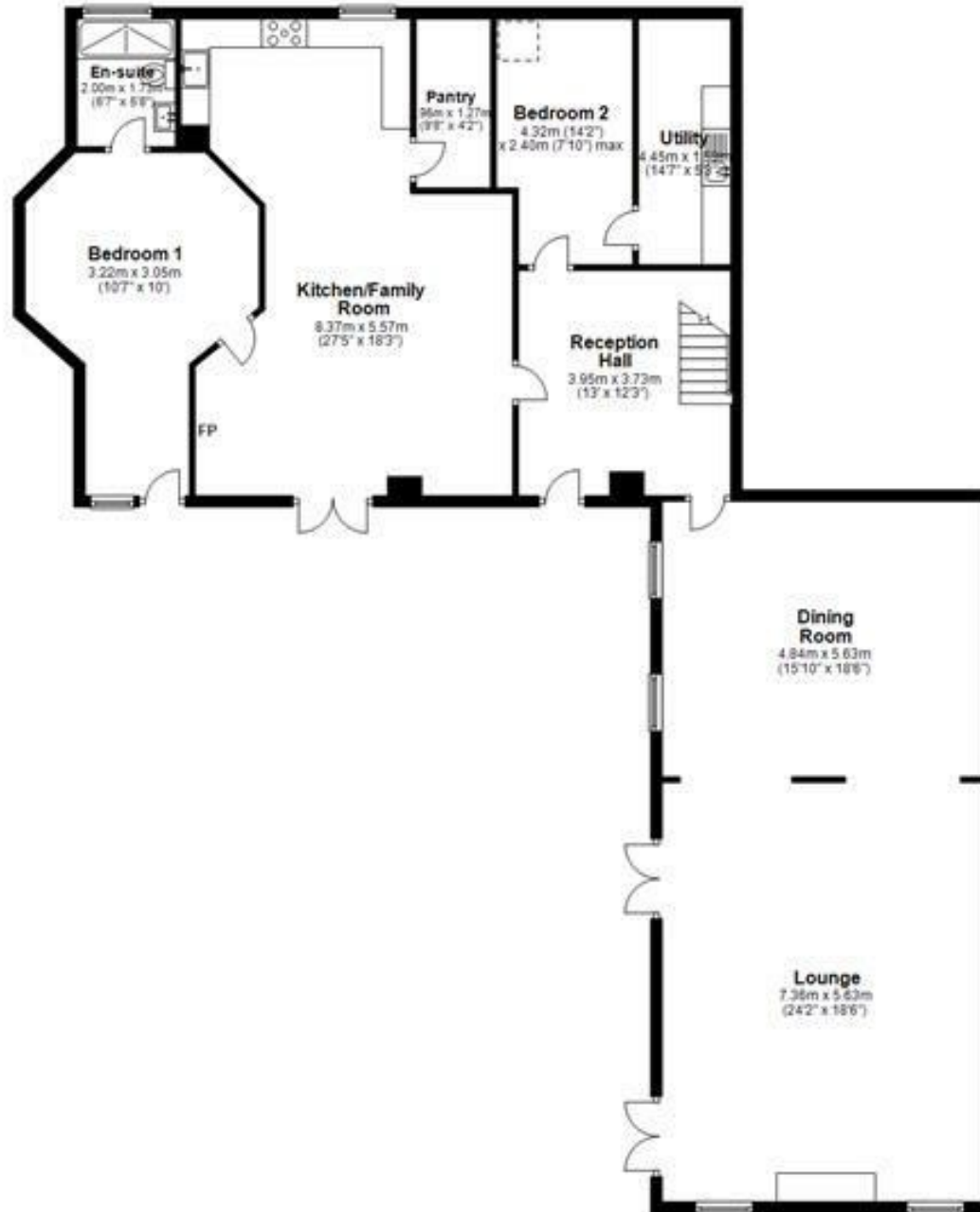


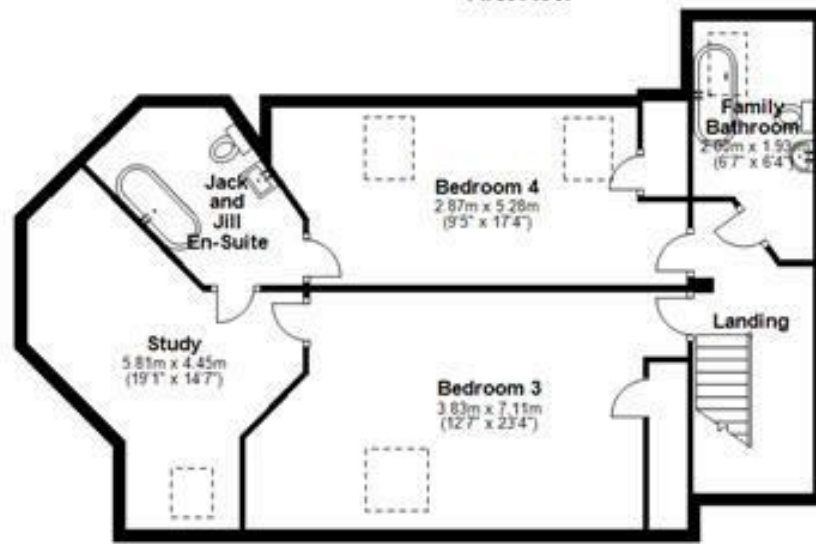






Ground Floor

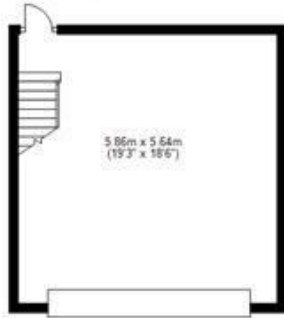




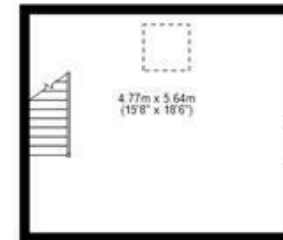


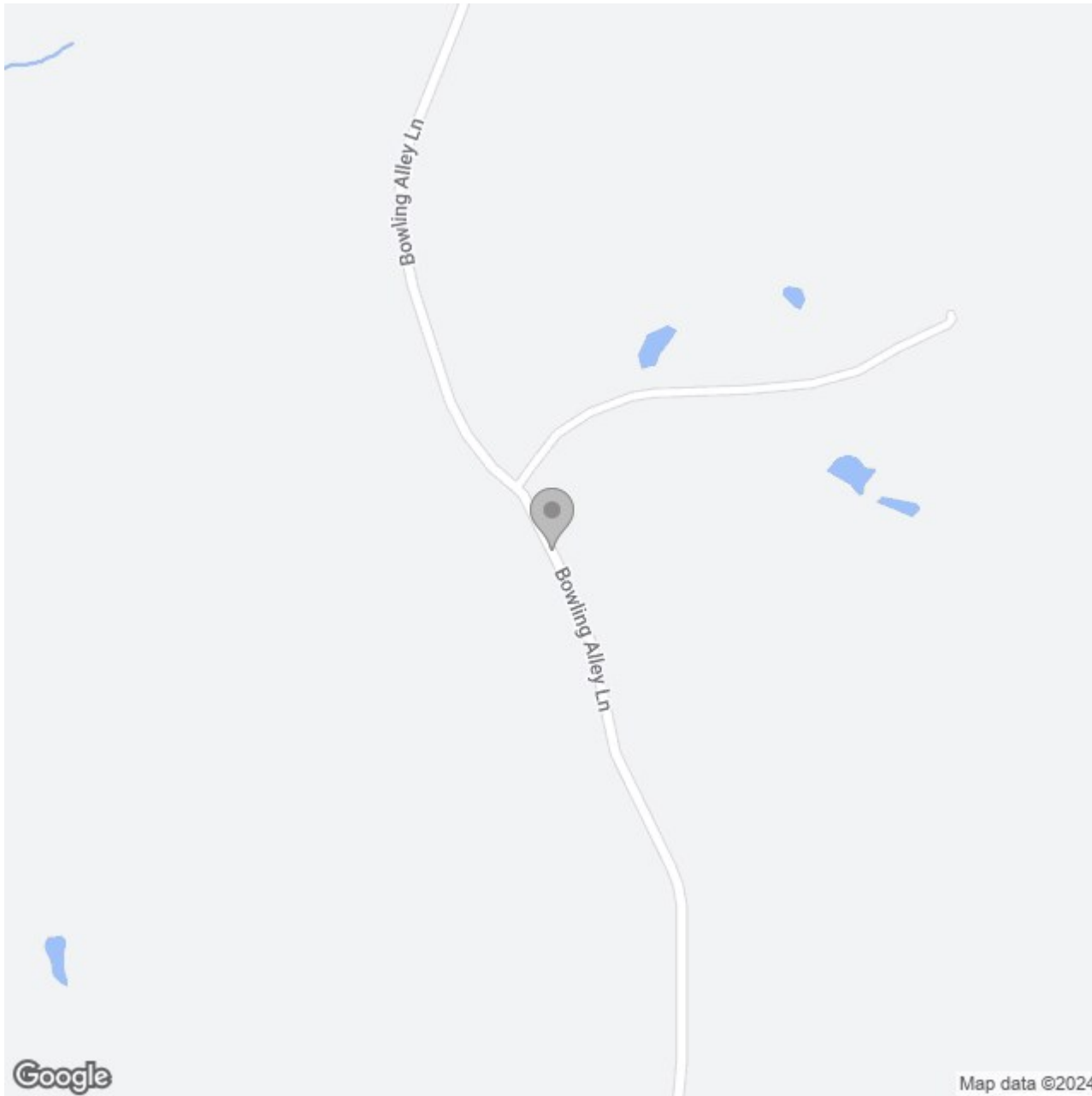


Garage - Ground Floor



Garage First Floor





Energy Efficiency Rating

	Current	Potential
<i>Very energy efficient - lower running costs</i>		
(92 plus) A		
(81-91) B		
(69-80) C		69
(55-68) D	53	
(39-54) E		
(21-38) F		
(1-20) G		
<i>Not energy efficient - higher running costs</i>		
England & Wales	EU Directive 2002/91/EC	