





*** FEATURE HOMES ***

RESERVE ANY BRAMBLE BEFORE 31st
JULY 2025 AND RECEIVE LUXURY
FLOORING, TURF & £15,000 DISCOUNT *

The Bramble is a detached dormer bungalow that is a accessible and adaptable dwelling. The front door opens into the hallway, where the open and expansive lounge complete with a bay window, full sized bathroom, open plan kitchen/diner and master bedroom can be accessed.

Up the stairs, you will find the second double bedroom and additional bathroom. The study and additional storage can also be accessed from the landing. The Bramble also has a single garage on all plots except plot 7.

Images are for illustration purposes only.


ABODE
SALES & LETTINGS

THE DEVELOPMENT

An exclusive collection of 22 modern two bedroom bungalows, Rolleston Leas is a peaceful and welcoming community exclusively for those over the age of 55, in the charming village of Rolleston on Dove in Staffordshire.

Rolleston Leas has been carefully designed to complement its picturesque surroundings to create a tranquil, yet friendly community to help you unwind and ease into later life. Situated in Rolleston on Dove and close to Stretton, it is conveniently located near local amenities including shops, restaurants, and healthcare services, and providing a safe and comfortable environment for those who wish to enjoy an independent lifestyle.

ENTRANCE HALLWAY

KITCHEN / DINING

14'7" x 11'6"

LOUNGE

13'5" x 12'1"

MASTER BEDROOM

12'7" x 10'3"

ENSUITE SHOWER ROOM

BEDROOM TWO

12'7" max x 8'5"

BATHROOM

SINGLE GARAGE

MANAGEMENT FEE

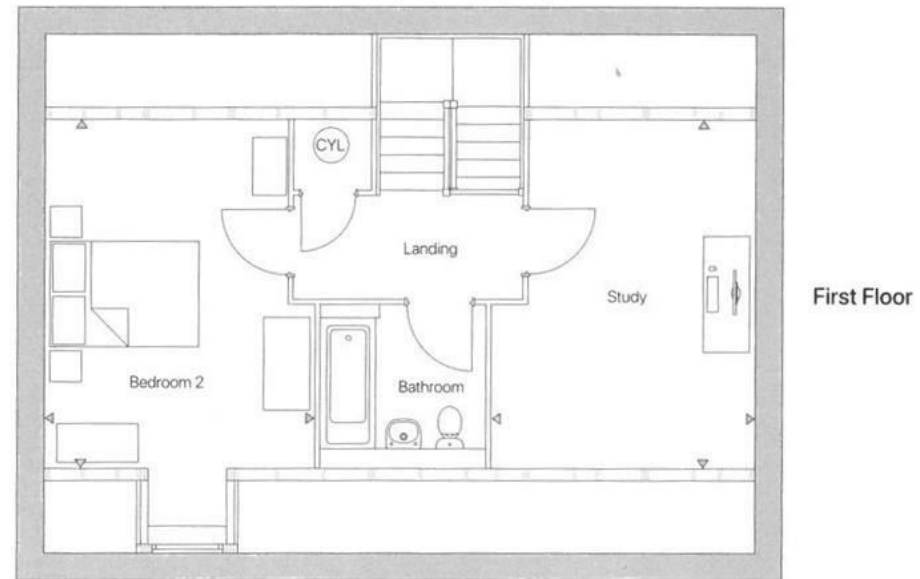
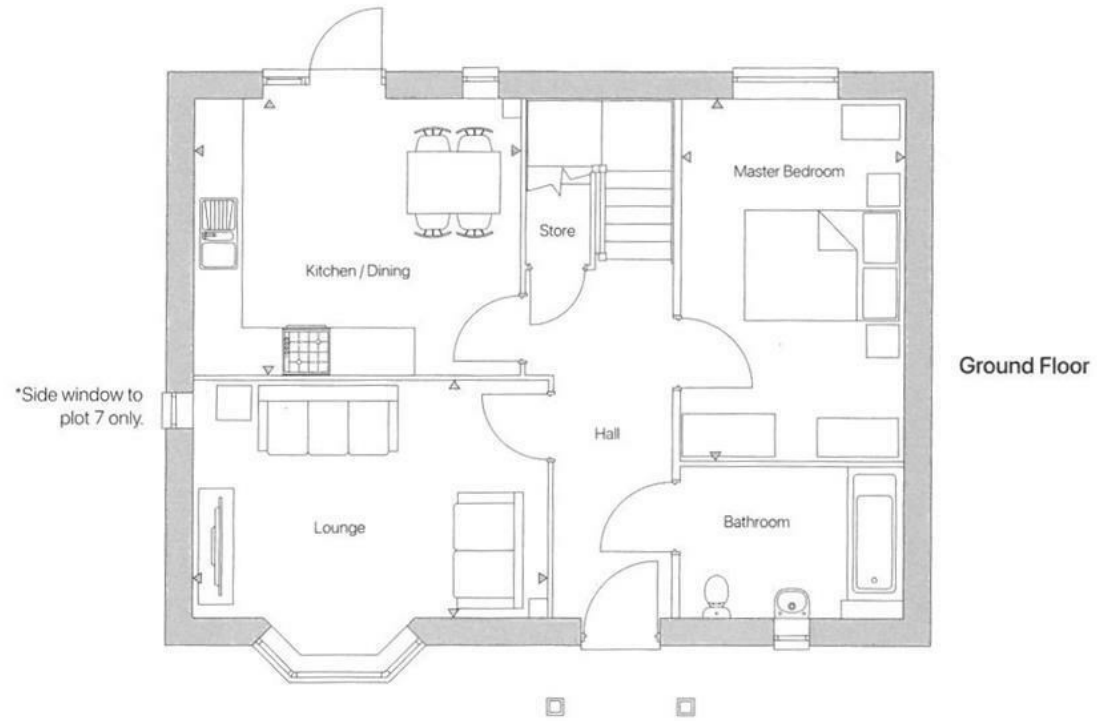
A management charge of £397.37 per annum is

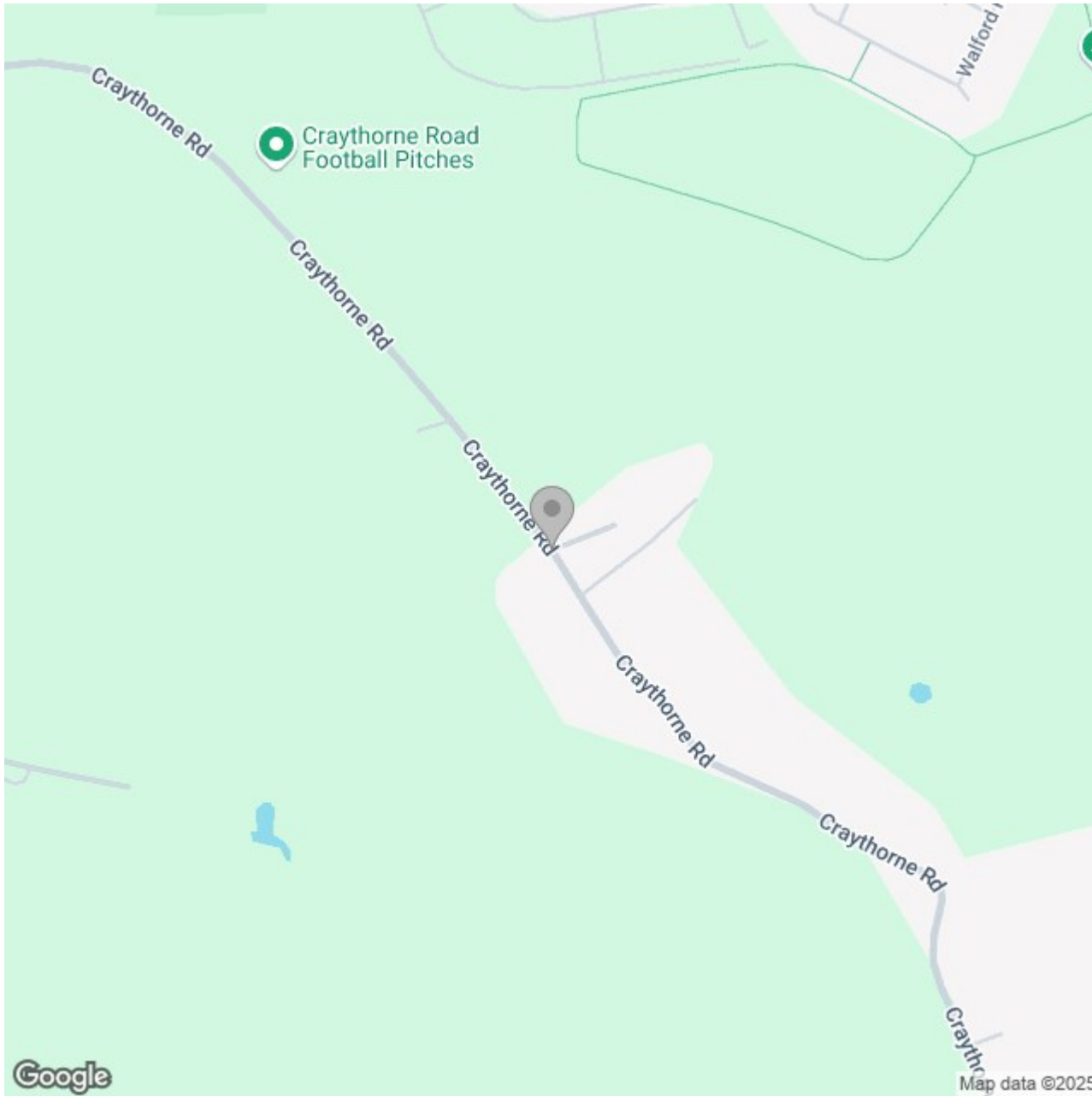


applicable to this development, speak to the Sales Executive for further details.









Energy Efficiency Rating

	Current	Potential
Very energy efficient - lower running costs		
(92 plus) A		
(81-91) B		
(69-80) C		
(55-68) D		
(39-54) E		
(21-38) F		
(1-20) G		
Not energy efficient - higher running costs		
England & Wales	EU Directive 2002/91/EC 	