



Pre-show home offer - receive a £22,000 contribution and a flooring package worth over £8,000.* Plus, be in for summer!

Abode are pleased to present to the market this rare opportunity to buy on the stunning David Wilson Drakelow Park. Call us on 01283 845888 for more information.

This four bedroom Holden offers an open-plan kitchen-diner with a fully-glazed pod. From here, French doors open out onto your rear garden. A large bay-fronted lounge offers you plenty of space to relax, whilst a home study allows for homeworking.

Upstairs, there are four double bedrooms, an ensuite shower off the main bedroom and a separate main bathroom. A detached garage with parking for two cars completes this lovely home.



Kitchen / Family / Dining

20167'3"m x 15370'8"m

Lounge

19035'5"m x 12230'11"m

Study Downstairs

9468'6"m x 7746'0"m

Utility

8349'8"m x 5226'4"m

WC

4914'8"m x 5226'4"m

Bathroom

8822'2"m x 10639'9"m

Bedroom 1

14904'10"m x 12230'11"m

Bedroom 2

14383'2"m x 12230'11"m

Bedroom 3

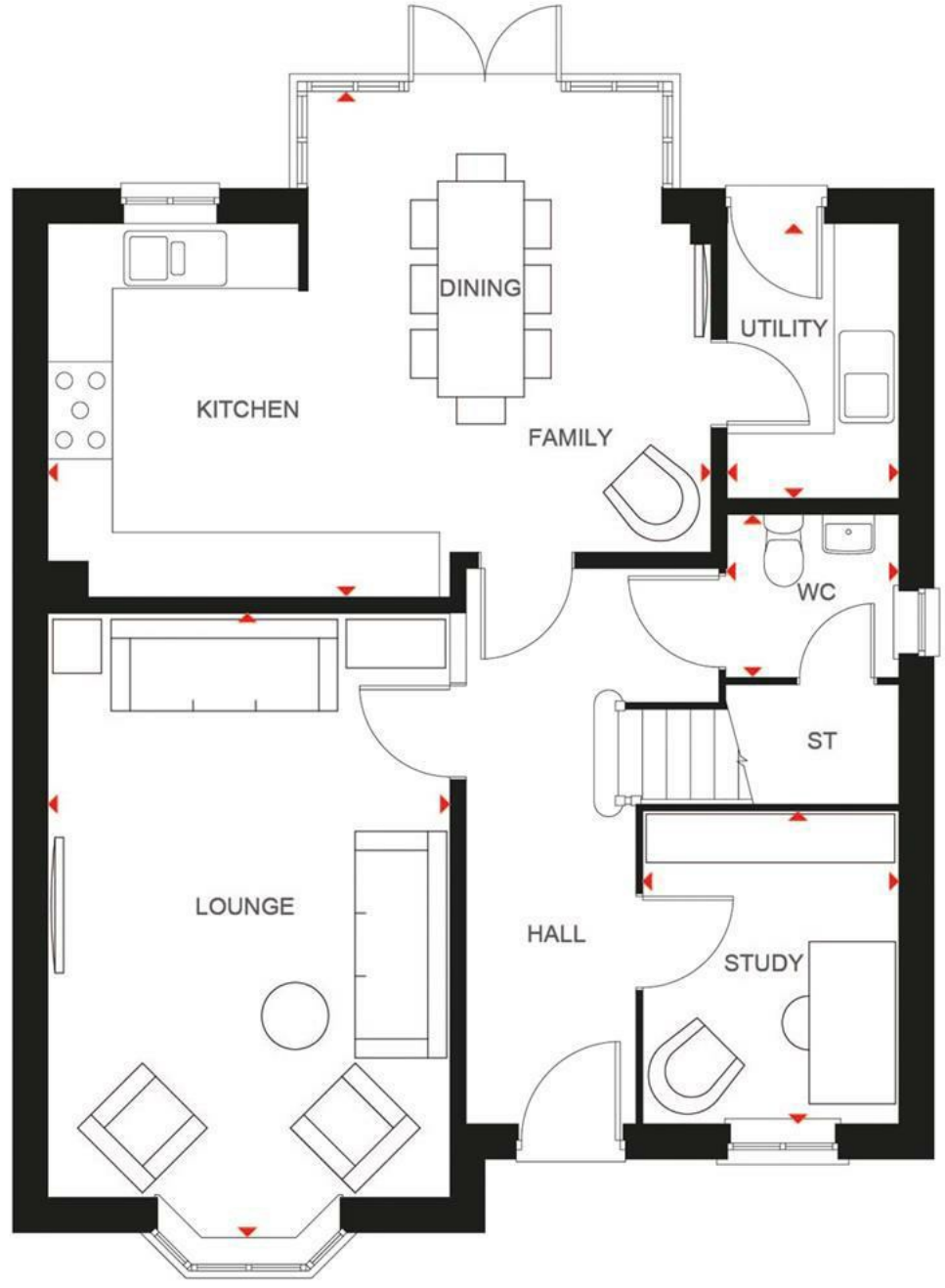
13362'10"m x 9468'6"m

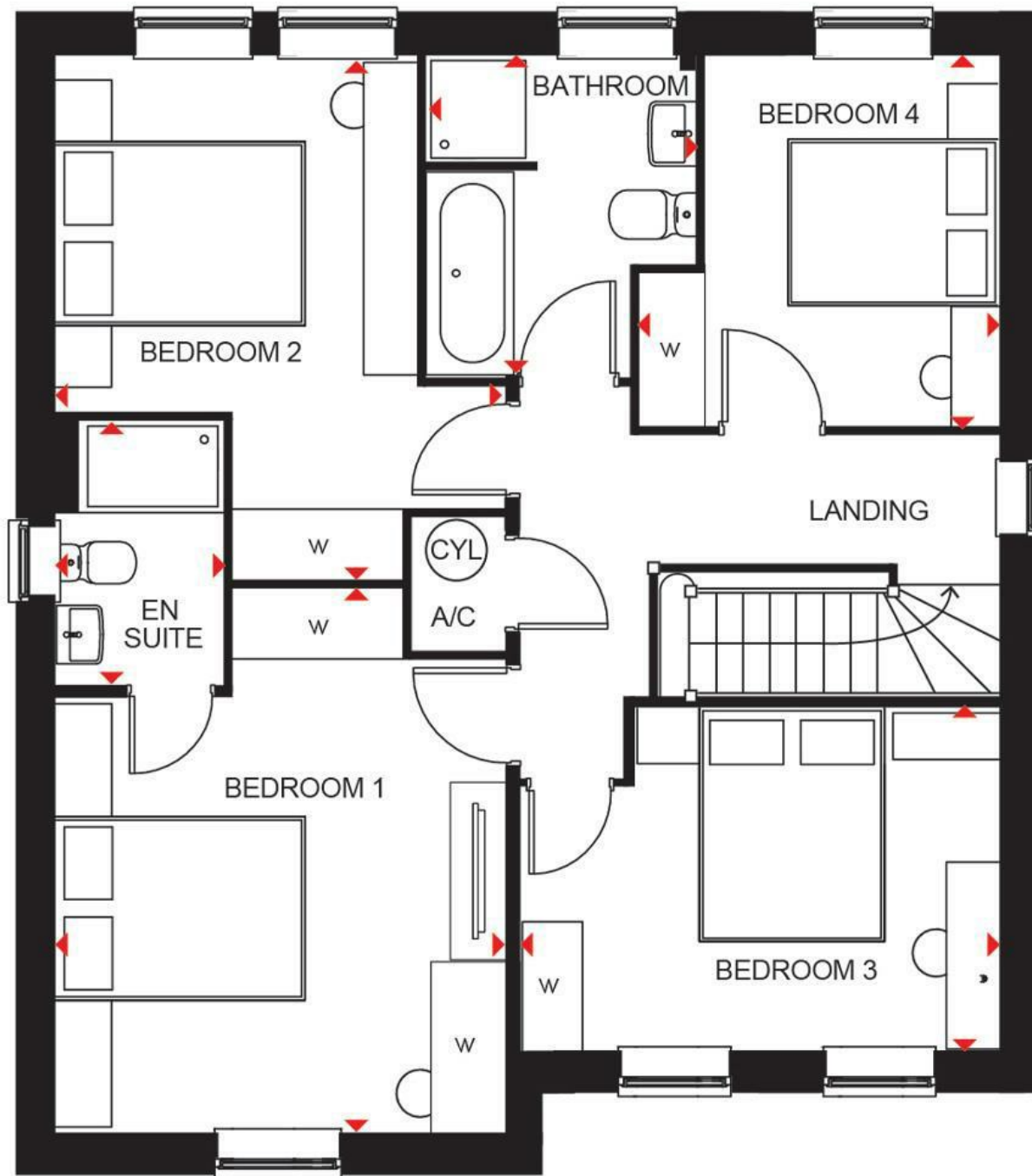
Bedroom 4

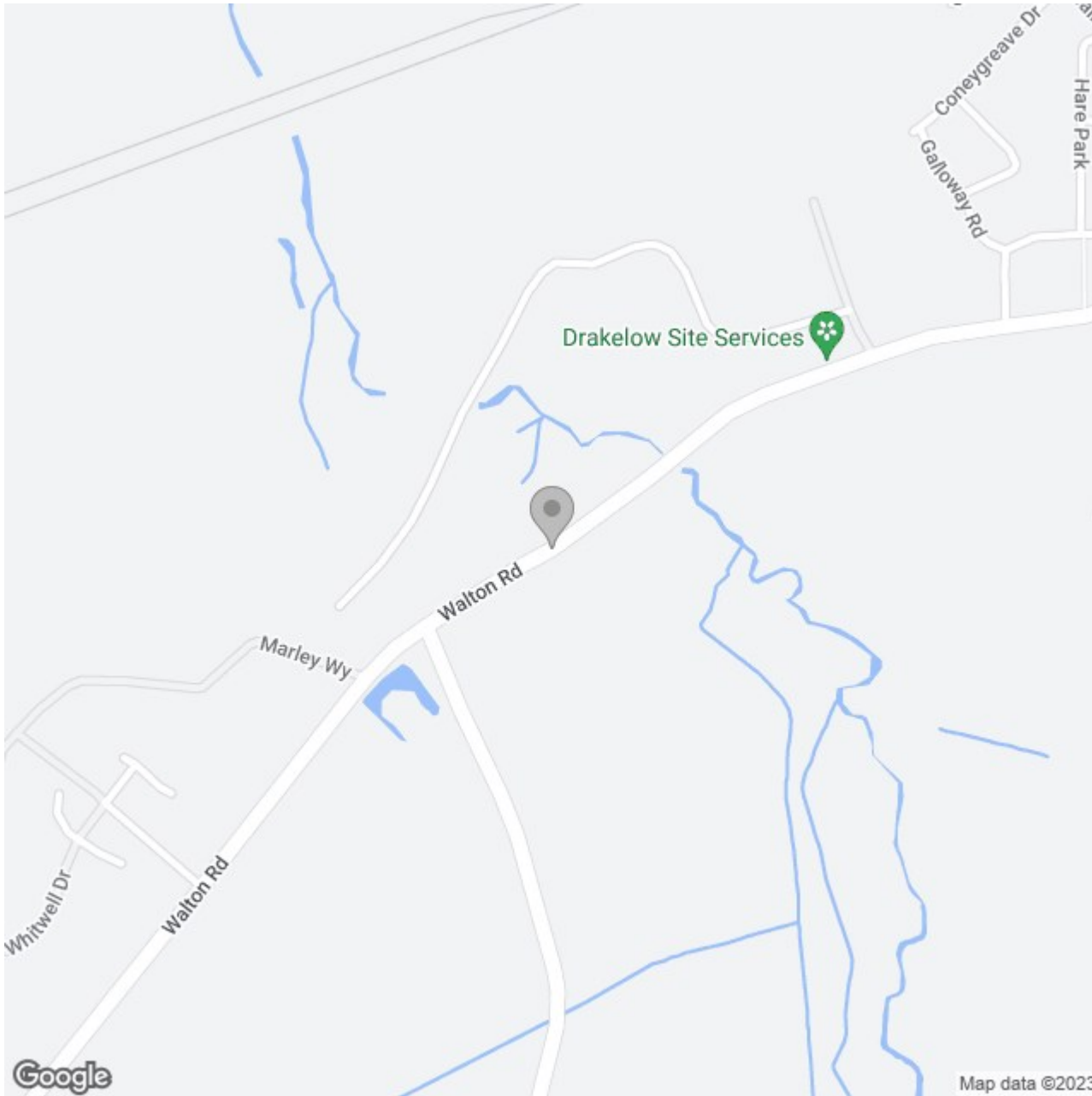
10236'2"m x 9983'7"m

Ensuite 1

7185'0"m x 4560'4"m







Energy Efficiency Rating

	Current	Potential
<i>Very energy efficient - lower running costs</i>		
(92 plus) A		
(81-91) B		
(69-80) C		
(55-68) D		
(39-54) E		
(21-38) F		
(1-20) G		
<i>Not energy efficient - higher running costs</i>		
England & Wales	EU Directive 2002/91/EC	