



Abode are pleased to present to the market this rare opportunity to buy on the stunning David Wilson Drakelow Park. Call us on 01283 845888 for more information.

AUTUMN 2023 COMPLETION

The Exeter is ideal for families needing flexible living space. The open plan kitchen-diner features a glazed bay with French doors that lead to your garden and a has separate utility. The spacious lounge with feature bay window is a perfect place to relax and full of natural light.

Upstairs, your main bedroom has an en suite shower. There are three further double bedrooms and a family bathroom with separate bath and shower.



Kitchen / Family / Dining

19133'10"m x 15666'0"m

Lounge

16709'3"m x 12631'2"m

Utility

10328'1"m x 5659'5"m

WC

5413'4"m x 4908'1"m

Bathroom

9993'5"m x 6187'7"m

Bedroom 1

12631'2"m x 12175'2"m

Bedroom 2

13805'9"m x 13412'0"m

Bedroom 3

13805'9"m x 11564'11"m

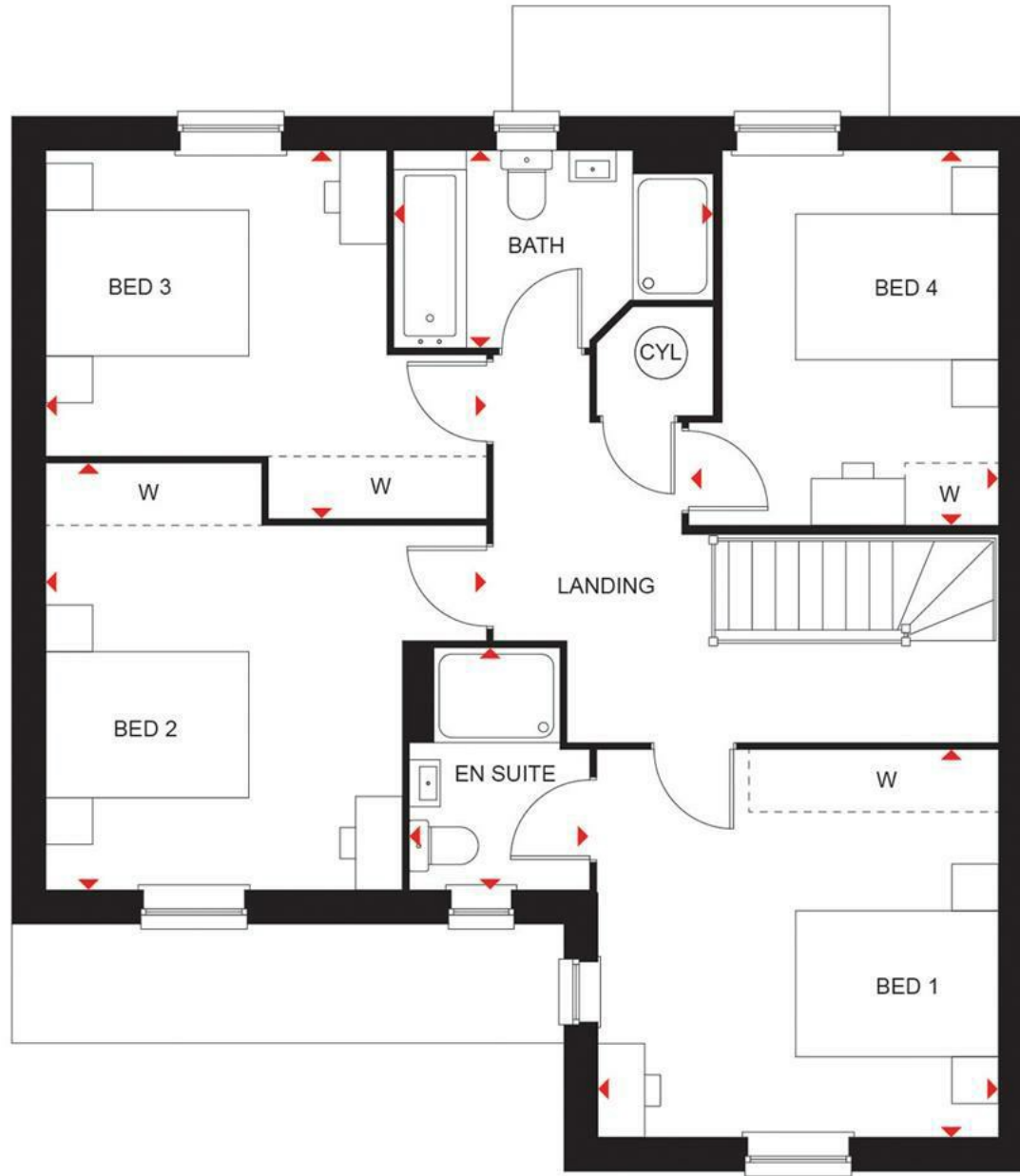
Bedroom 4

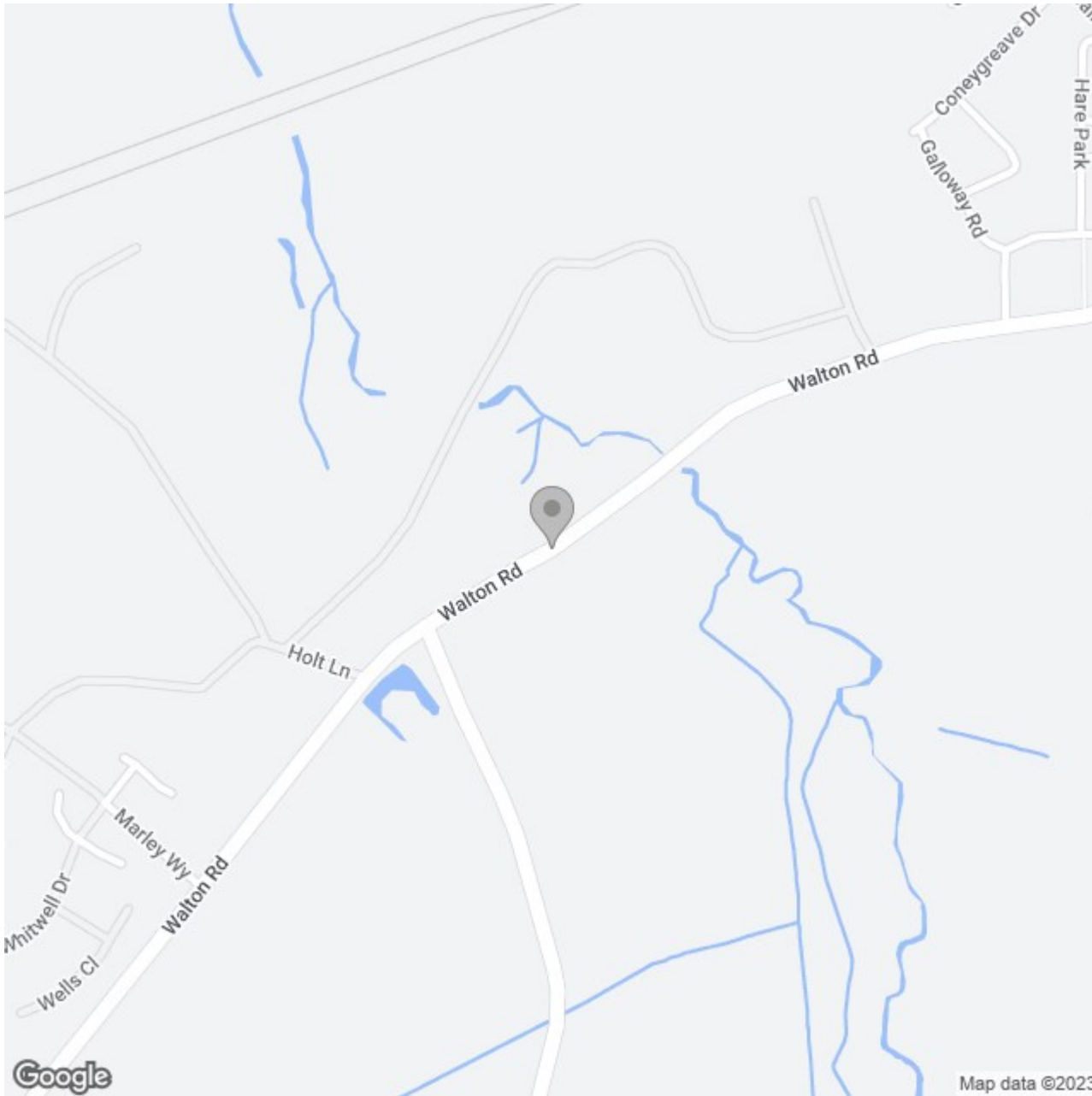
11847'1"m x 9599'8"m

Ensuite

7595'1"m x 5613'6"m







Energy Efficiency Rating

	Current	Potential
<i>Very energy efficient - lower running costs</i>		
(92 plus) A		
(81-91) B		
(69-80) C		
(55-68) D		
(39-54) E		
(21-38) F		
(1-20) G		
<i>Not energy efficient - higher running costs</i>		
England & Wales	EU Directive 2002/91/EC	