



Pre-show home offer - receive a £28,000 contribution and a flooring package worth over £10,000.* Plus, be in for summer!

Abode are pleased to present to the market this rare opportunity to buy on the stunning David Wilson Drakelow Park. Call us on 01283 845888 for more information.

This Buckingham is a spacious home, ideal for upsizing. With a spacious lounge to the front, there is enough seating space for your guests. There is an open-plan kitchen-diner with French doors to the garden. Also, there is a separate dining room, allowing you to host formal dinner parties.

On the first and second floors, there are five double bedrooms. If you don't need all of the bedrooms why not create a playroom or games room? A double detached garage with additional parking completes this home.



HALLWAY

LOUNGE
16'6" x 12'3"

DINING
10'6" x 10'7"

KITCHEN/FAMILY/BREAKFAST
20'1" x 13'7"

UTILITY
6'1" x 5'5"

WC
5'5" x 2'11"

STUDY
9'7" x 9'4"

BEDROOM 1
16'7" x 12'5"

DRESSING ROOM
10'5" x 6'2"

EN SUITE
10'5" x 6'6"

BATHROOM
10'6" x 6'5"

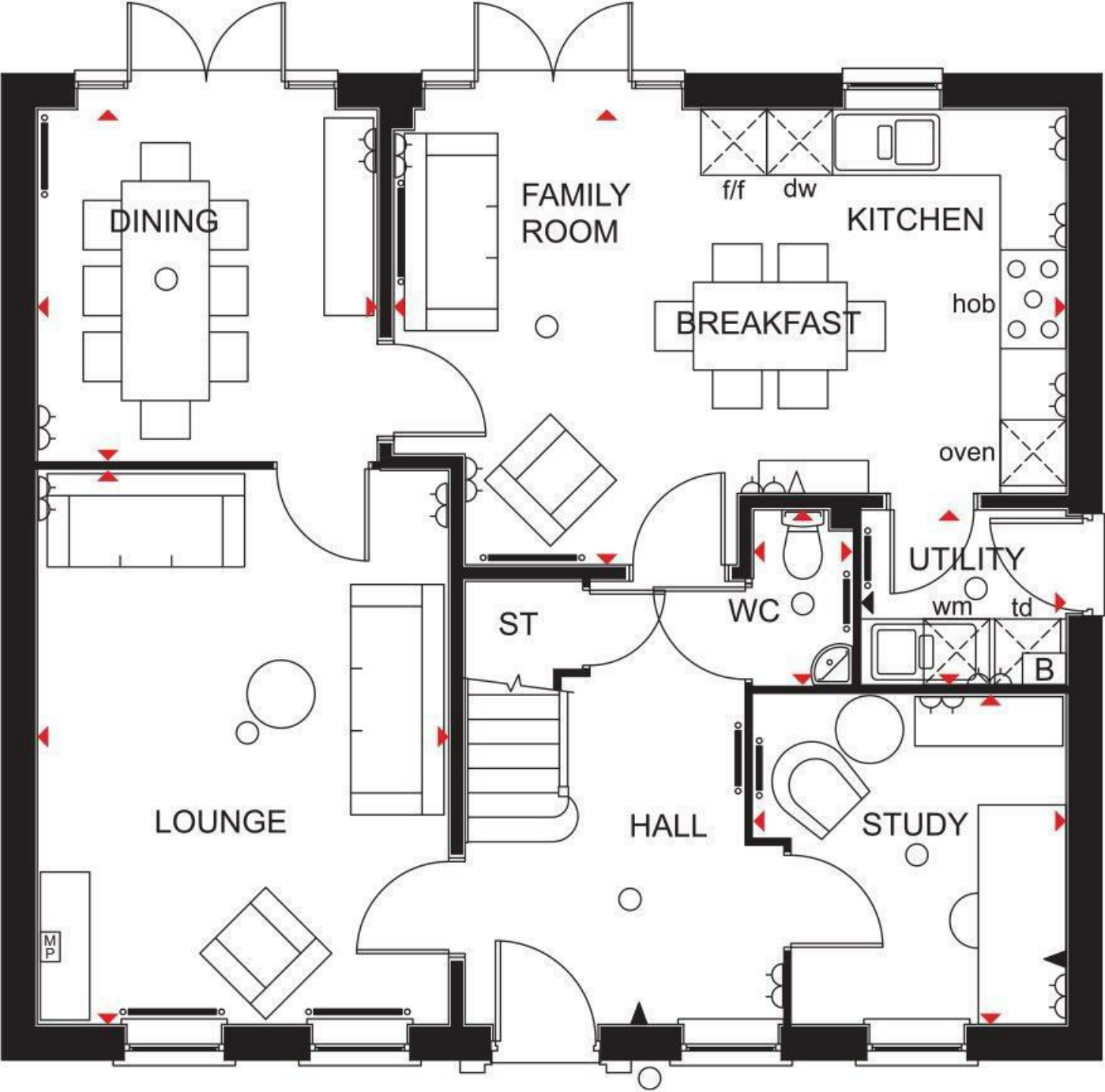
BEDROOM 4
15'6" x 10'6"

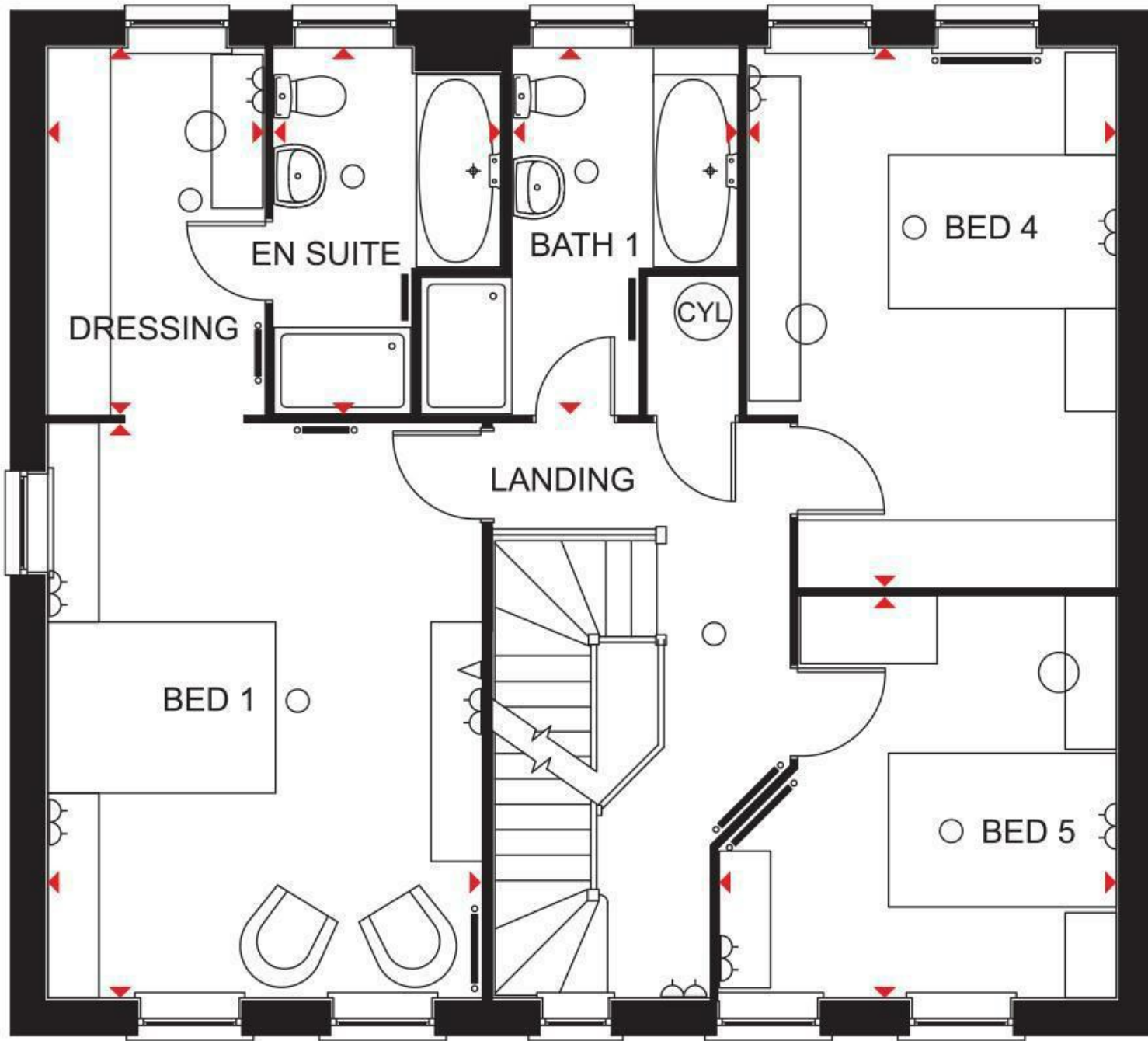
BEDROOM 5
11'6" x 11'5"

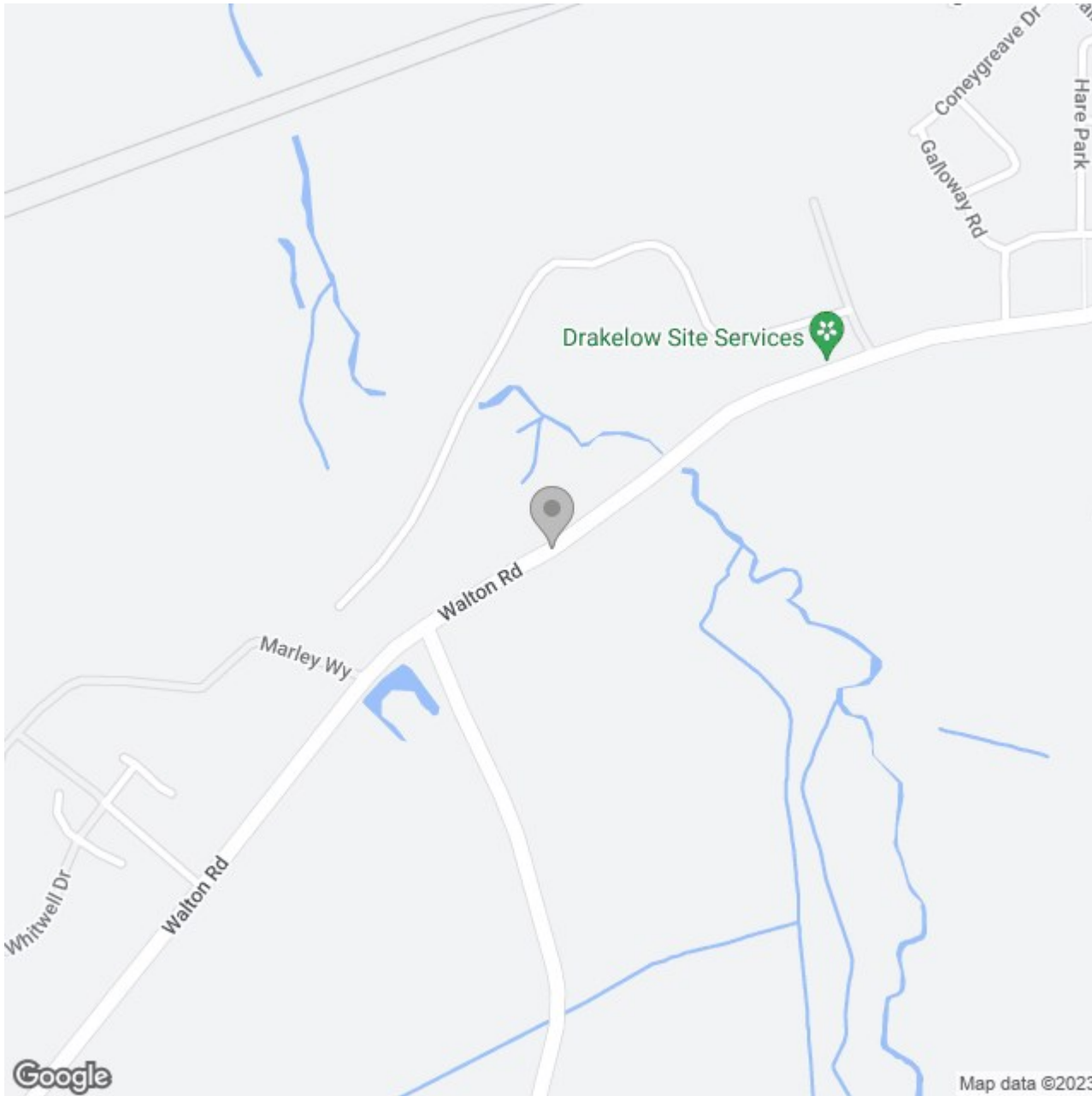
BEDROOM 2
19'9" x 13'5"

BATHROOM 2
8'5" x 7'5"

BEDROOM 3
9'11" x 13'5"







Energy Efficiency Rating

	Current	Potential
<i>Very energy efficient - lower running costs</i>		
(92 plus) A		
(81-91) B		
(69-80) C		
(55-68) D		
(39-54) E		
(21-38) F		
(1-20) G		
<i>Not energy efficient - higher running costs</i>		
England & Wales	EU Directive 2002/91/EC	