





**** STUNNING DETACHED PROPERTY ON THE HATTON COURT DEVELOPMENT ****

Well proportioned, high specification property offering a hall, cloakroom, lounge, open plan living & dining kitchen. Four first floor bedrooms, master with an en suite and a family bathroom. Garden, drive and a single garage. CALL ABODE FOR AN APPOINTMENT TO VIEW 01283 845888.



HALL

CLOAKROOM

LOUNGE

15'11 x 10'

OPEN PLAN LIVING/DINING KITCHEN

27'9 x 11'4

FIRST FLOOR

BEDROOM 1

15'11 x 13'6

EN SUITE

BEDROOM 2

13'9 x 10'3

BEDROOM 3

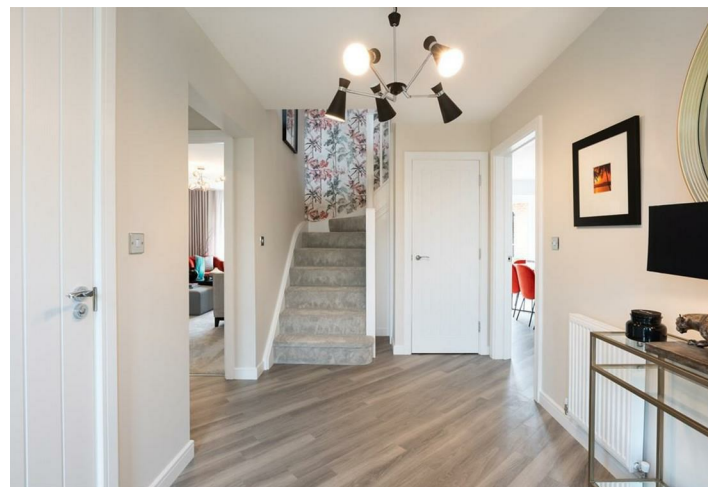
11'6 x 10'0

BEDROOM 4

10'2 x 7'11

BATHROOM



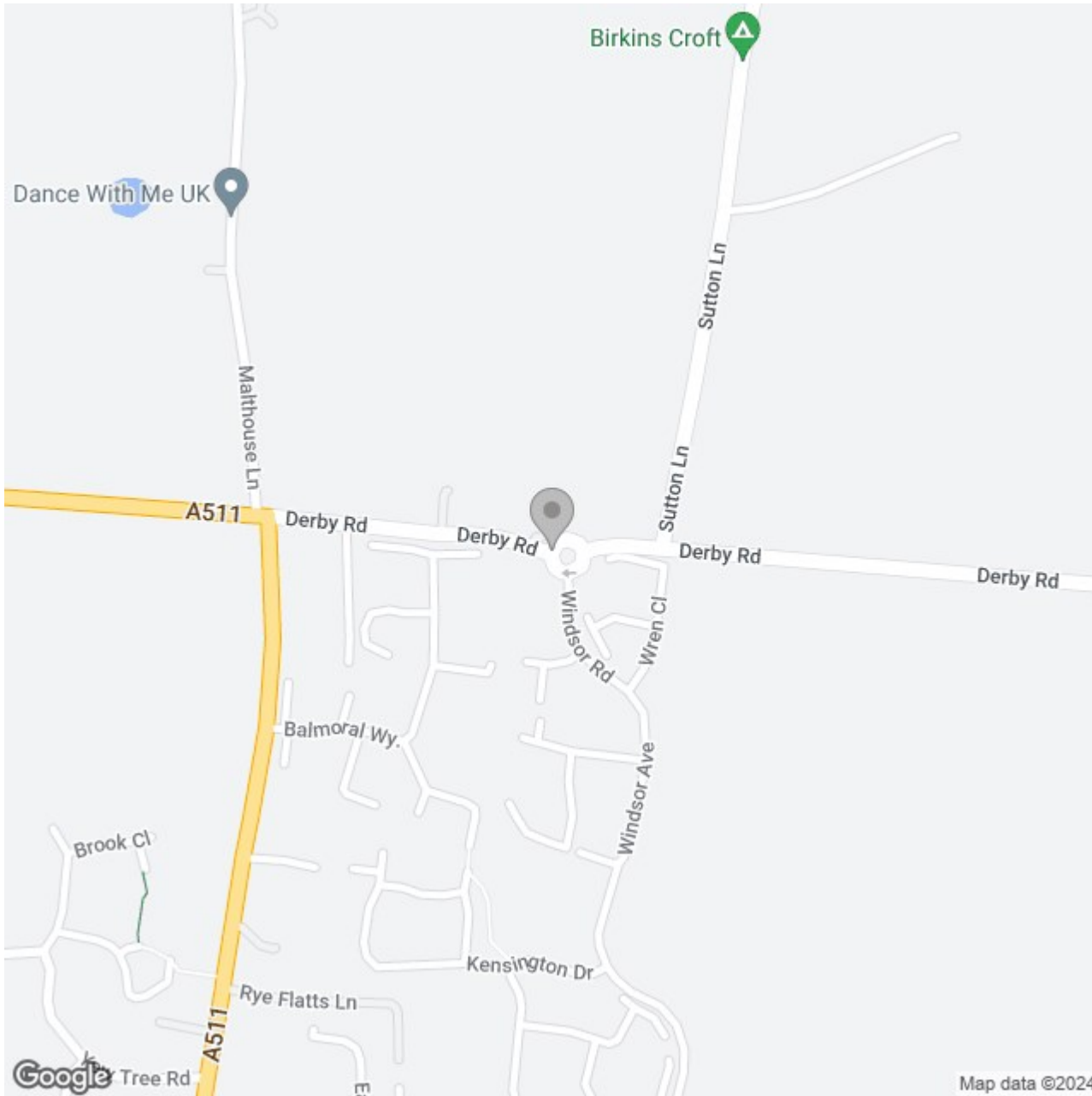












Energy Efficiency Rating

	Current	Potential
<i>Very energy efficient - lower running costs</i>		
(92 plus) A		
(81-91) B		
(69-80) C		
(55-68) D		
(39-54) E		
(21-38) F		
(1-20) G		
<i>Not energy efficient - higher running costs</i>		
England & Wales	EU Directive 2002/91/EC	