





**** EXECUTIVE DETACHED PROPERTY
ON THE HATTON COURT DEVELOPMENT
**** Perfect family home offering an
entrance hall, lounge, open plan fitted
dining kitchen with a utility room and
cloakroom. Four first floor bedrooms,
master with an en suite and a family
bathroom. Drive and a single garage.
CALL ABODE FOR AN APPOINTMENT TO
VEWI 01283 845888.



HALL

LOUNGE

14'2 x 14'1

OPEN PLAN LIVING DINING KITCHEN

20'11 x 18'7

UTILITY ROOM

CLOAKROOM

FIRST FLOOR LANDING

BEDROOM 1

15'9 x 14'1

EN SUITE

BEDROOM 2

11'9 x 10'9

BEDROOM 3

11'10 x 10'5

BEDROOM 4

10'6 x 10'5

BATHROOM

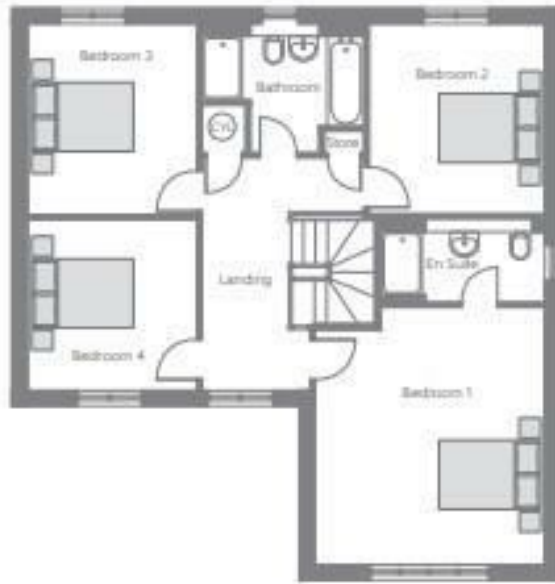












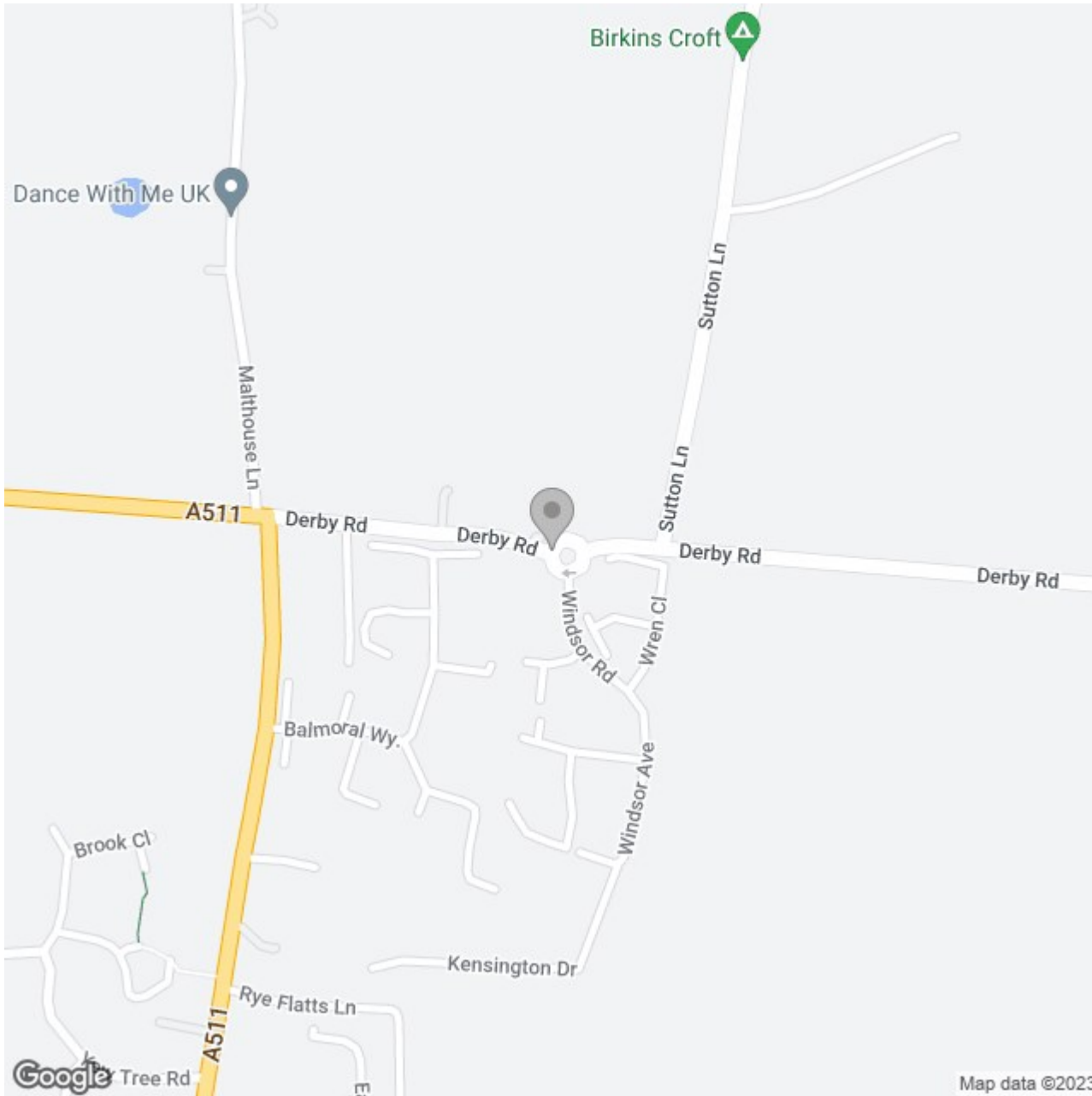
First Floor

Bedroom 1	4.809m x 4.290m	15'9" x 14'1"
Bedroom 2	3.580m x 3.276m	11'9" x 10'9"
Bedroom 3	3.596m x 3.175	11'10" x 10'5"
Bedroom 4	3.189m x 3.175m	10'6" x 10'5"



Ground Floor

Kitchen/Dining Area	6.366m x 5.670m (max) (max)	20'11" x 18'7" (max) (max)
Living Room	4.320m x 4.290m	14'2" x 14'1"



Energy Efficiency Rating

	Current	Potential
<i>Very energy efficient - lower running costs</i>		
(92 plus) A		
(81-91) B		
(69-80) C		
(55-68) D		
(39-54) E		
(21-38) F		
(1-20) G		
<i>Not energy efficient - higher running costs</i>		
England & Wales	EU Directive 2002/91/EC	